

PART NO.	"ØD"	"H"	THREAD	STUD THREAD "S"	INSERT THREAD "I"	FIG. NO.	
SDD-DII-1326-M4	13	26	M4	---	4	3	
SDD-DAA-158-M4	15	8		10	---	1	
SDD-DAA-1515-M4		13		---	1		
SDD-DIA-1515-M4		15		4	2		
SDD-DII-1515-M4		---		3			
SDD-DAA-1530-M4		30		---	1		
SDD-DIA-1530-M4		15		4	2		
SDD-DAA-2025-M6		20		25	M6	19	---
SDD-DIA-2025-M6			---			6	2
SDD-DII-2025-M6	---		3				
SDD-DAA-2510-M6	25	10	18.5	---	---	1	
SDD-DAA-2515-M6		15		---	1		
SDD-DIA-2515-M6		6		2			
SDD-DAA-2520-M6		20		---	1		
SDD-DIA-2520-M6		6		2			
SDD-DIA-2530-M6		30		6	2		
SDD-DAA-3020-M8	30	20	M8	20.5	---	1	
SDD-DIA-3020-M8				---	8	2	
SDD-DII-3020-M8				---	3		

FIG. 1 (DAA)

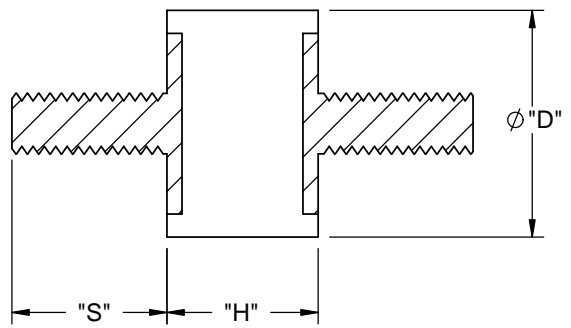


FIG. 2 (DIA)

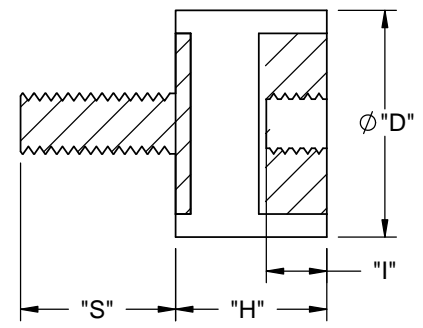
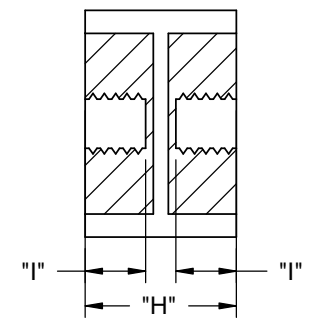


FIG. 3 (DII)



NOTES:  
 1. MATERIAL: NATURAL RUBBER, SHORE 55A (RMS-207).  
 COLOR: BLACK.  
 2. THREADED METAL INSERTS: STEEL ST37 GALVANIZED (RMS-266).

TITLE: METRIC QUIET MOUNT				DWG IN MM		FINAL	
CREATED USING SOLIDWORKS	FILE #: SDD	DWN: SK	APP: SK	PART #			
TOLERANCES UNLESS NOTED .X=±.25 .XX=±.13 ANG.=±1°	SHEET: 1 OF 1	SHEET SIZE: A	DT: 02/01/05	CHKD: D.Z.	SEE TABLE		PRINT TYPE
RE: RICHCO, INC.	RICHCO, INC. ENG@RICHCO-INC.COM (773) 539-4060						CA

REV.	DESCRIPTION	ENGR.	DATE
D	SEE CO 200773 FOR CHANGES	SK	04/30/12
C	SEE CO 200179 FOR CHANGES	SK	05/12/08
B	SEE ECN #1266 FOR CHANGES	SK	12/14/06
A	RELEASED FOR PRODUCTION	SK	02/01/05