

Emerson™

SureSwitch™ relay

Universal Electronic Upgrade
for Mechanical Compressor Contactors

49P11-843



Contactor

+

Short-Cycle Timer

Brownout Protection

=

Long-Life Sealed Switch



Benefits

- 5x contactor life
- Sealed relay to keep out ants and debris
- Microprocessor control nearly eliminates contact welding and pitting
- Ideal install with new Preventative Maintenance contracts
- Compressor is protected from brownouts and short cycling
- Save on pest control treatments

5-Year Limited Warranty



Sealed Relay Construction

The internal compressor relay is completely sealed from insects and debris.

General Ratings

Amps:	40 (FLA)	Coil:	24 VAC
Amps:	200 (LRA)	Pole:	1 or 1.5

White-Rodgers™

EMERSON™
Climate Technologies



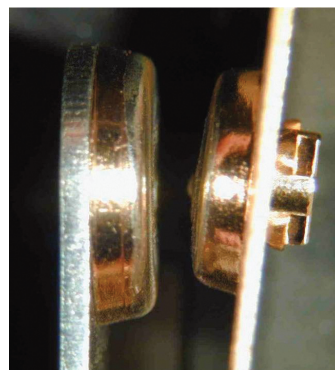
Universal Electronic Upgrade for Mechanical Compressor Contactors

Features

- Microprocessor controlled sealed compressor switching
- Line voltage brownout protection
- Short cycle protection
- Tricolor LED displays
- Heavy-duty lug connectors
- Zero chatter latching relay
- Four-hole mounting matches mechanical contactors
- Random start delay on power up and brownout recovery
- Compressor test and cycle count by pushbutton

Performance Tested

The sealed SureSwitch relay has undergone exhaustive testing on Copeland 5-ton scroll compressors to demonstrate ultimate reliability. This technology has been utilized on OEM controls since 2006 and is now available for the Aftermarket.

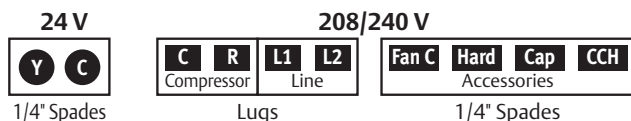


Contacts after one million cycle testing.

5x Contactor Life

Microprocessor controlled switching algorithms reduce arcing, virtually eliminating contact pitting and welding.

Terminal Designations



LED Flash Codes

Slow Green	Standby
Solid Green	Normal
Fast Green	Delay
Green / Red	Low Line Volt.
Green / Yellow / Red	Test

Specifications

Electrical Ratings

Line Voltage Input 208/240 VAC, 50/60 Hz
Full Load Amperes (FLA) 40A
Locked Rotor Amperes (LRA) 200A
Control (Coil) Voltage (Y, C)..... 24 VAC, 50/60 Hz

Recommended Terminal Torque – C, R, L1 and L2

#4 – 6 AWG	45 in-lbs
#8 AWG.....	40 in-lbs
#10 – 14 AWG	35 in-lbs

24 VAC (Y, C) Terminals are ¼" Male QC's accepting #12-24 AWG wire

Timings

Anti-Short-Cycle Delay.....	0s or 180s (selectable) at 60 Hz
	0s or 216s (selectable) at 50 Hz
Compressor Test	5s at 60 Hz
	6s at 50 Hz

Dimensions

2-3/4" W x 2-3/8" H x 3-7/8" L

Operating Temperature Range

-40° to 158° F (-40° to 70° C)

Humidity Range

5 to 95% relative Humidity (non-condensing)

For Additional Information

Scan QR Code or visit us at www.white-rodgers.com

SureSwitch relay requires line voltage for operation and testing