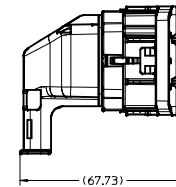
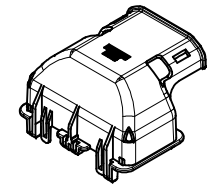


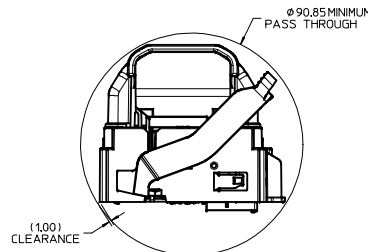
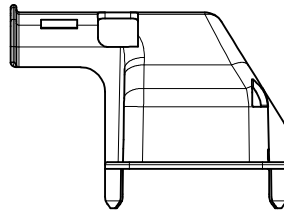
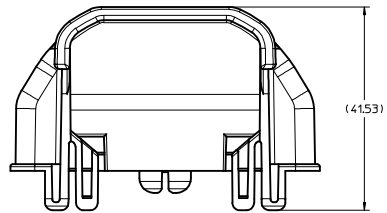
END VIEW
SCALE 1:1



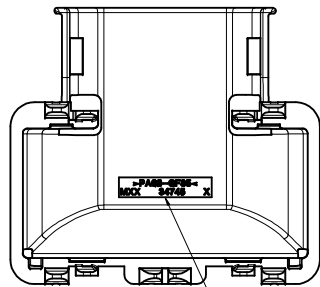
SIDE VIEW
SCALE 1:1



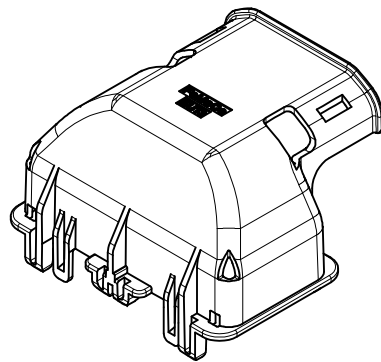
SCALE 1:1



SCALE 1:1



SEE NOTE #11



NOTES UNLESS OTHERWISE SPECIFIED

- PART MUST CONFORM TO THE FORD CONNECTOR SYSTEM DESIGN SPECIFICATION (SDS) REV 15 DATED 17SEPT2007
- PART MUST CONFORM TO USCAR SAE-2 REV5 DATED NOV2007
- ALL PLASTIC PARTS MUST HAVE MATERIAL IDENTIFICATION SYMBOLS CLEARLY MARKED, WHEREVER PACKAGE SIZE PERMITS
- ENGINEERING APPROVAL REQUIRED FOR ALL SOURCING AND TOOLING OF THIS PART
- FOR ENGINEERING APPROVED SOURCE SEE ENGINEERING RELEASE
- ENGINEERING APPROVAL OF SAMPLE FROM SUPPLIER IS REQUIRED PRIOR TO AUTHORIZATION OF PART PRODUCTION
- CHANGES IN DESIGN, COMPOSITION, OR PROCESSING OF THE PART, PREVIOUSLY APPROVED FOR PART PRODUCTION REQUIRES PRIOR ENGINEERING APPROVAL
- GENERAL TOLERANCES:
LINEAR: PER DIN 16901-130
ANGULAR: ±3°
- 0.3 MAXIMUM RADIUS PERMISSIBLE ON EDGES AND FILLETS SHOWN AS SHARP FOR PLASTIC PARTS
- PARTS ARE TO BE FREE OF SCRATCHES, DISCOLORATIONS, SALT RESIDUE OR OTHER IMPERFECTIONS THAT MAY AFFECT FUNCTION OR FIT OF PART
- LETTERING SHALL BE AS LARGE AS POSSIBLE, LOCATED ON RECESSED PAD APPROXIMATELY AS SHOWN, THIS INCLUDES MOLD CAVITY ID, SERIES NUMBER, MANUFACTURING LOCATION, MATERIAL DESIGNATION, VENDOR ID AND CUSTOMER ID.
- PART MUST MATE WITH MOLEX CONNECTOR SERIES 34745 AND 34746
- PART IS SHIPPED SEPARATELY
- 20% MAXIMUM REGRIND ALLOWED

| | |
|----|---|
| B1 | SAP NOTICE #10591650 ECN #UAU2013-1639 KDEKOSKI 04/17/13 SAP NOTICE #16D |
| B | ECN #UAU2011-0493 KDEKOSKI 08/29/12 |
| A1 | SAP NOTICE #10490158 ECN #UAU2011-0598 JDUNAJ 01/24/11 |
| A | SAP NOTICE #10483555 ECN #UAU2011-0371 JDUNAJ 11/24/10 |

| | | | | | | | |
|---|-----------------|---------------------------------------|---|--|--|---|---------------------------|
| SEE REV. COLUMN IEC NO. UAU2013-1639 DRAWN BY: JDUNAJ CHKD: KDEKOSKI APPR: KDEKOSKI 2013/04/17 2013/04/18 | QUALITY SYMBOLS | GENERAL TOLERANCES (UNLESS SPECIFIED) | DIMENSION STYLE | SCALE | DESIGN UNITS | THIRD ANGLE PROJECTION | |
| | ▽=0 | mm INCH | MM ONLY | 2:1 | METRIC | 90 DEG LARGE VOLUME WDC G-PCM CONNECTOR END LATCH | |
| | ▽=0 | SEE NOTES | 4 PLACES ±---+--- 3 PLACES ±---+--- 2 PLACES ±---+--- 1 PLACE ±---+--- | DRAWN BY: JDUNAJ CHECKED BY: KDEKOSKI APPROVED BY: RBAUMAN | DATE: 2010/10/18 DATE: 2010/10/22 DATE: 2010/12/07 | MATERIAL NO. 347450905 | DOCUMENT NO. SD-34745-905 |
| | ▽=0 | ANGULAR ±---° | DRAFT WHERE APPLICABLE MUST REMAIN WITHIN DIMENSIONS | SIZE D | MOLEX INCORPORATED | | SHEET NO. 1 OF 1 |