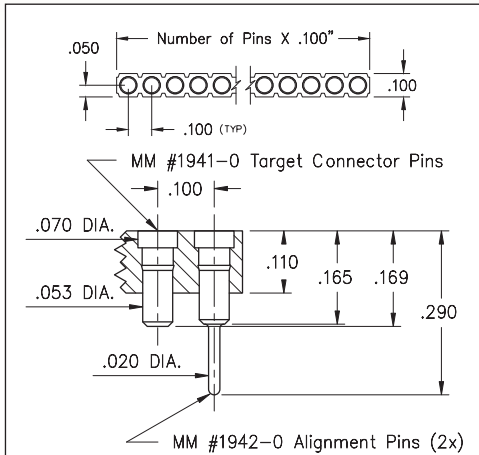
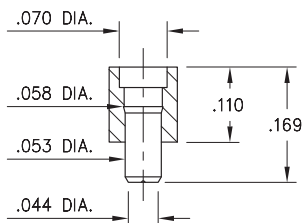


# SPRING-LOADED CONNECTORS

## SERIES 319, 399 • .100" GRID TARGET CONNECTORS FOR SPRING-LOADED ASSEMBLIES • SINGLE ROW STRIPS

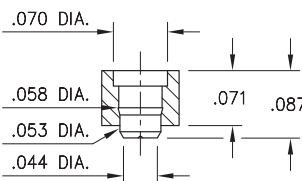


**FIG. 1**



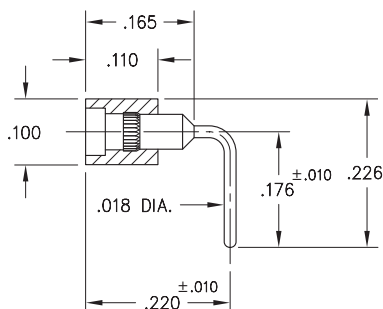
Coplanarity .005". For Pin counts >10 positions, consult Technical Support.

**FIG. 2**



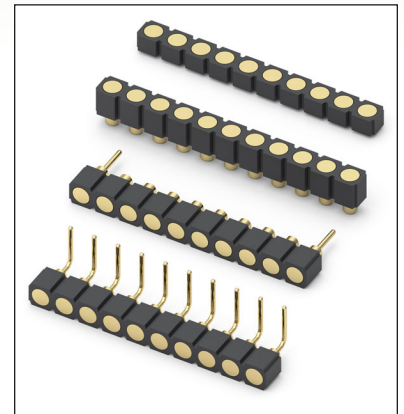
Coplanarity .005". For Pin counts >10 positions, consult Technical Support.

**FIG. 3**



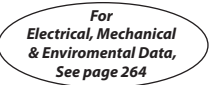




**FIG. 4**

- Series 319 and 399 Spring Target Connectors, supplied in single row strips. Available in SMT and right angle through-hole termination configurations
- Target Connectors provide an excellent gold-plated conductive mating surface for spring loaded connectors. These series are offered with a flat face for making contact with our standard .042" dia. spring pin plungers
- Target connectors use MM #1940, #1941/1942, #1953 and #1954 pins. See pages 218 & 223.3 for details
- Insulators are high temperature thermoplastic



### ORDERING INFORMATION

<b>FIG. 1</b>	<b>Series 319...041</b> <b>Surface Mount w/ Alignments Pins</b>
	319-10-1__-30-041000 Specify number of pins      03-64
<b>FIG. 2</b>	<b>Series 319...008</b> <b>Surface Mount</b>
	319-10-1__-30-008000 Specify number of pins      01-64
<b>FIG. 3</b>	<b>Series 319...054</b> <b>Low Profile Surface Mount</b>
	319-10-1__-30-054000 Specify number of pins      01-64
<b>FIG. 4</b>	<b>Series 399...008</b> <b>Right Angle Solder Tails</b>
	399-10-1__-10-008000 Specify number of pins      01-64
  	
<b>SPECIFY PLATING CODE XX=</b>	10 
Pin Plating 	10 μ" Au

