

Technical specification:

Rated voltage: IEC 61076-2-101	4pos 5pos 250 V 60 V
Current rating: IEC 61076-2-101	4 A at 40°C
Insulation resistance: IEC 60512	≥100 MΩ
Pollution degree: IEC 60664-1	3/2
Degree of protection: IEC 60529	IP 67, in mated condition
Temperature range: IEC 60664-1	-30°C ... +85°C
Mating cycles: IEC 60512-9a	≥100

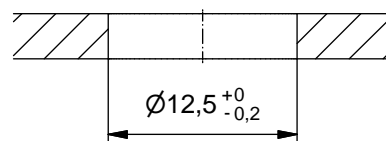
Materials:

Contact:	CuZn
Contact plating:	Nickel, gold plated
Contact carrier:	PA6.6, UL 94
Sealing:	FPM
Socket housing:	CuZn, nickel plated
Shroud:	CuSn6
-plating:	Tin plated

Installation specification:

recommended torque:	0,8-1 Nm
Conec installation tool:	Torque wrench: 36-000200 Insert across flats 15: 36-000320

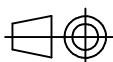
feedthrough



Part no:	Description:	Pos	Note:
43-01204	SAL - 12 - FSHW4	4	
43-01205	SAL - 12S - FSHW4	4	with shroud
43-01206	SAL - 12 - FSHW5.1	5	
43-01207	SAL - 12S - FSHW5.1	5	with shroud

DO NOT ALTER CAD DRAWING BY HAND
Directive 2002/95/EC RoHS compliant

Index: a 25.03.11 fro Ä3914
Data sheet revised, technical specification changed



dim. in mm

	date	name
drawn	17.10.07	Fromm
appd.	29.02.08	W. Schmidt

title:
**Male socket M12x1 angled,
backmounting, dip solder**

dwg no:

43K1A512

part no:



THIS DRAWING MAY NOT BE COPIED OR REPRODUCED IN ANY WAY, AND MAY NOT BE PASSED ON TO A THIRD PARTY WITHOUT WRITTEN PERMISSION.
OWNERSHIP AND COPYRIGHT OF CONEC GmbH