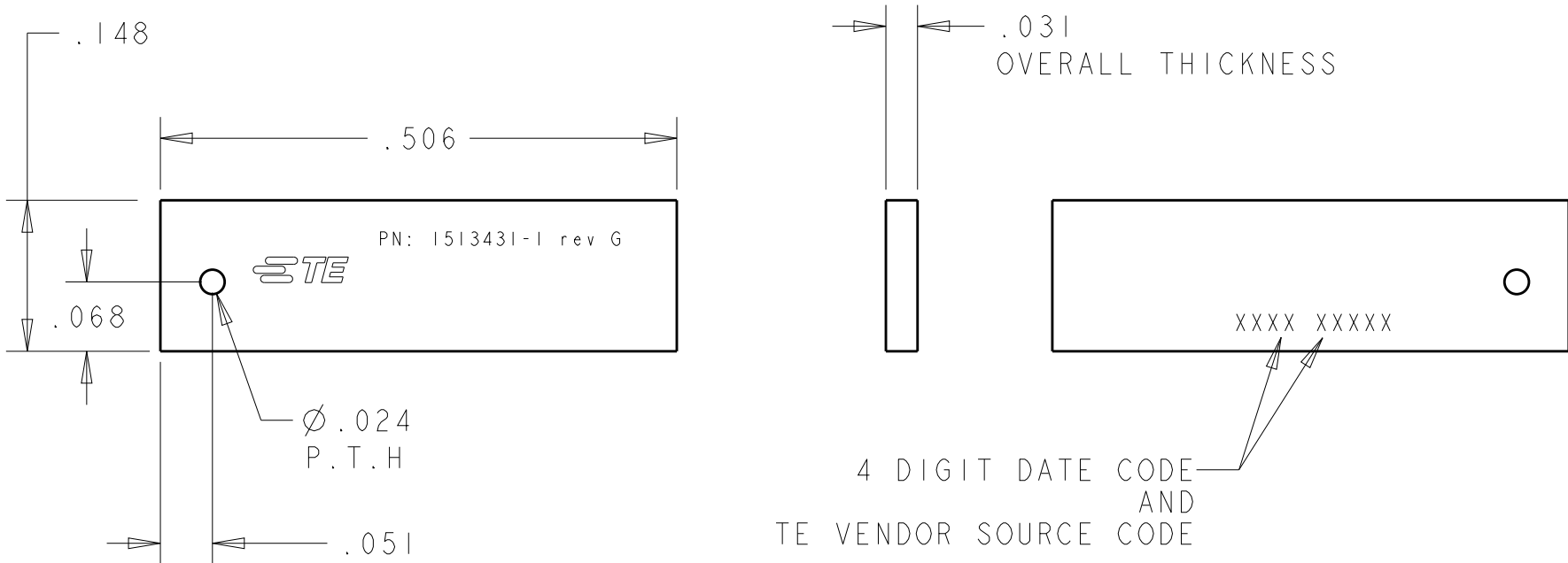



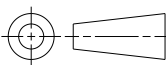
| REVISIONS |     |                       |           |     |      |
|-----------|-----|-----------------------|-----------|-----|------|
| P         | LTR | DESCRIPTION           | DATE      | DWN | APVD |
|           | G   | REV PER ECO-15-002516 | 12MAR2015 | KF  | PG   |
|           |     |                       |           |     |      |
|           |     |                       |           |     |      |
|           |     |                       |           |     |      |



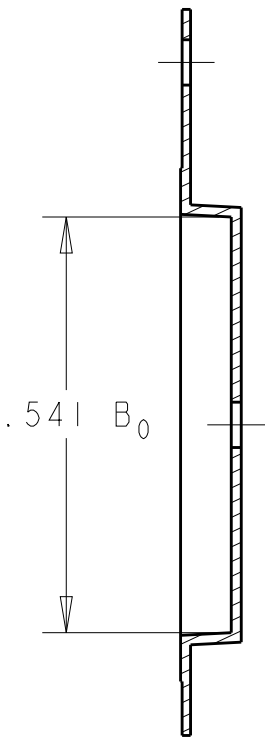
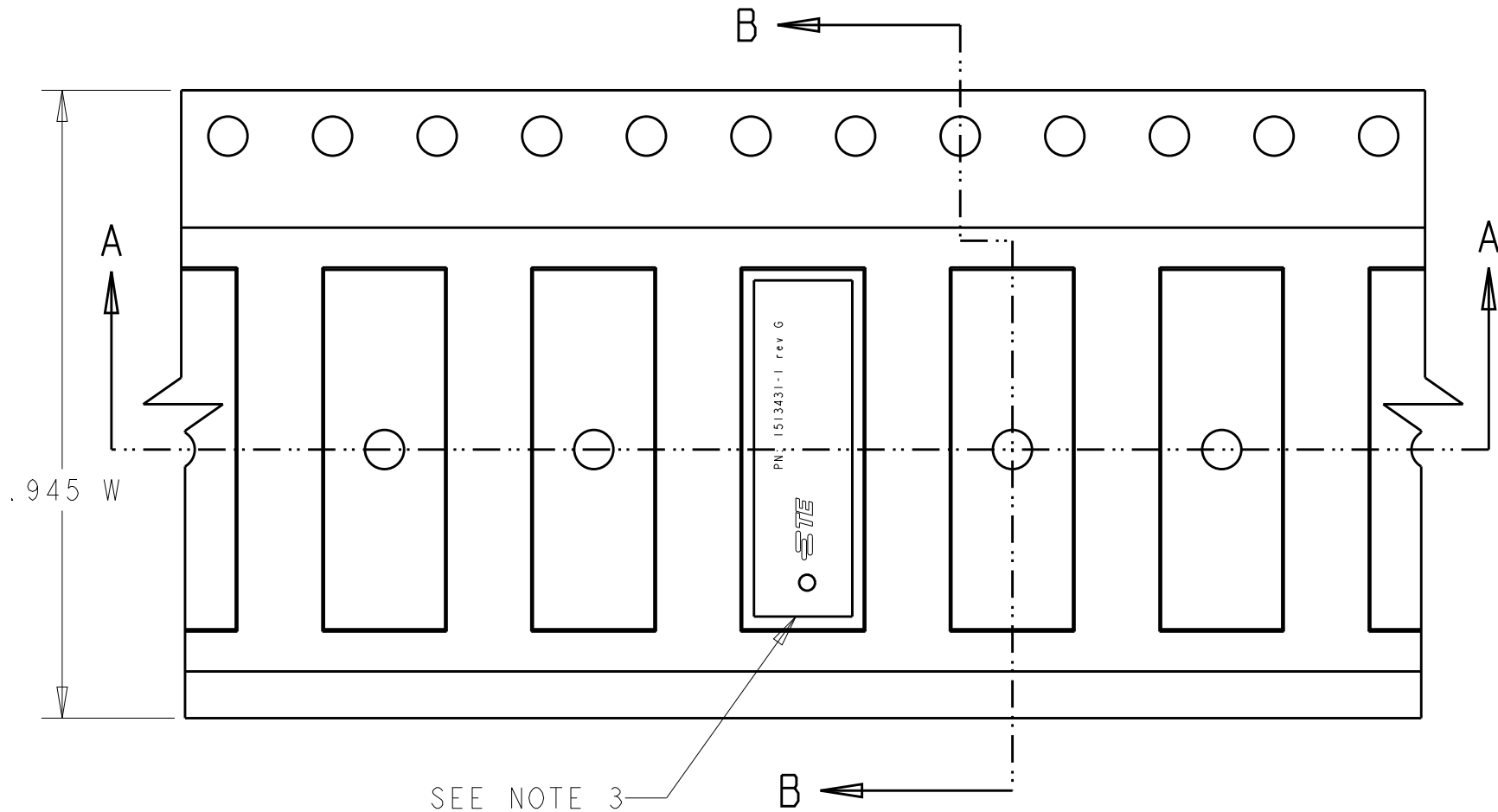
- NOTES: UNLESS OTHERWISE SPECIFIED.
- FABRICATE TO MEET IPC - 6012, CLASS 2.  
INSPECT TO MEET IPC - A - 600, CLASS 2.
  - PRIMARY AND SECONDARY SIDES SHOWN.
  - MATERIAL : ISOLA IS415 .028 THK.,  
1/2 OZ. COPPER BOTH SIDES.  
DIELECTRIC CONSTANT @ 1MHZ 4.2 ± 0.1.
  - FINISH:  
A: 1/2 Oz COPPER PLATING.  
B: SOLDERMASK OVER BARE COPPER (SMOBC).  
C: MASK BOTH SIDES OF PCB WITH LPI SOLDERMASK.  
SOLDERMASK COLOR: NATURAL GREEN.  
D: IMMERSION TIN PLATING
  - THREE PLACE TOLERANCES: ±.009
  - PACKAGING: SINGULATED PARTS TO BE SECURELY SHRINK WRAPPED, BAGGED OR VACUUM PACKED IN BULK FOR TAPE AND REEL, SEE SHEET 2
  - PARTS ARE COMPLIANT TO ROHS STANDARDS PER TE CONNECTIVITY STANDARD TEC-138-702.
  - CONSULT TE CONNECTIVITY DATA SHEET DSI513431
  - CONTACT TE CONNNECTIVITY ENGINEERING PRIOR TO DESIGNING INTO AN APPLICATION

1513431-2 AS SHOWN

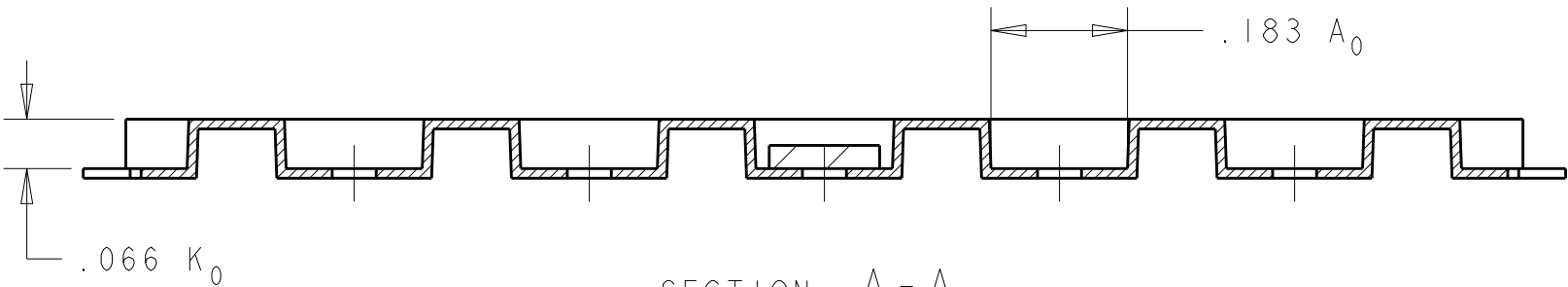
FOR TAPE AND REEL PACKAGING, ORDER P/N 1513431-1  
FOR BULK PACKAGING, ORDER P/N 1513431-2

|   |  |   |  |   |                |   |                    |         |          |
|---|--|---|--|---|----------------|---|--------------------|---------|----------|
| THIS DRAWING IS A CONTROLLED DOCUMENT.  |  | DWN<br>VG<br>19DEC2007                    |  |  TE Connectivity |                |   |                    |         |          |
| DIMENSIONS:<br>INCHES   |  | TOLERANCES UNLESS<br>OTHERWISE SPECIFIED: |  | CHK<br>-  |                | NAME<br><br>802.11b<br>Diversity Antenna<br>Fabrication Drawing |                    |         |          |
|   |  |   |  | APVD<br>-   |                |   |                    |         |          |
|  |  | PRODUCT SPEC<br>-                         |  |   |                |   |                    |         |          |
|   |  | APPLICATION SPEC<br>-                     |  |   |                |   |                    |         |          |
|   |  | WEIGHT<br>-                               |  |   |                |   |                    |         |          |
| MATERIAL<br>-<br><br>-  |  | FINISH<br>-<br><br>-                      |  | SIZE<br>A3  | CAGE CODE<br>- | DRAWING NO<br>C-1513431   | RESTRICTED TO<br>- |         |          |
| CUSTOMER DRAWING  |  |   |  |   |                | SCALE<br>1:1  | SHEET<br>1         | OF<br>2 | REV<br>G |

| REVISIONS |     |             |      |     |      |
|-----------|-----|-------------|------|-----|------|
| P         | LTR | DESCRIPTION | DATE | DWN | APVD |
|           | -   | SEE SHEET 1 | -    | -   | -    |
|           |     |             |      |     |      |
|           |     |             |      |     |      |
|           |     |             |      |     |      |



SECTION B-B


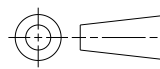


SECTION A-A

1513431-1 AS SHOWN

NOTES: UNLESS OTHERWISE SPECIFIED.

1. REFER TO TE CONNECTIVITY DRAWING NO. C-1513126 FOR TAPE SPECIFIC DIMENSIONS
2. PARTS ARE COMPLIANT TO RoHS STANDARDS PER TE CONNECTIVITY STANDARD TEC-138-702
3. ORIENT PARTS AS SHOWN.

|   |  |  |    |           |   |  |
|---|--|--|----|-----------|---|--|
| THIS DRAWING IS A CONTROLLED DOCUMENT.  |  | DWN                                    | VG | 19DEC2007 |  TE Connectivity |  |
|   |  | CHK                                    | -  | -         |   |  |
|   |  | APVD                                   | -  | -         |   |  |
|   |  | PRODUCT SPEC                           | -  | -         |   |  |
| DIMENSIONS:<br>INCHES   |  | TOLERANCES UNLESS OTHERWISE SPECIFIED: |    |           | NAME  |  |
|  |  | 0 PLC                                  | ±. | -         | 802.11b<br>Diversity Antenna<br>Fabrication Drawing   |  |
|   |  | 1 PLC                                  | ±. | -         |   |  |
|   |  | 2 PLC                                  | ±. | -         |   |  |
|   |  | 3 PLC                                  | ±. | -         |   |  |
|   |  | 4 PLC                                  | ±. | -         | SIZE  |  |
|   |  | ANGLES                                 | ±. | -         | CAGE CODE   |  |
| MATERIAL  |  | FINISH                                 | -  | -         | DRAWING NO  |  |
|   |  |  | -  | -         | RESTRICTED TO   |  |
|   |  |  | -  | -         | A3  |  |
|   |  |  | -  | -         | C-1513431   |  |
|   |  |  | -  | -         | CUSTOMER DRAWING  |  |
|   |  |  | -  | -         | SCALE   |  |
|   |  |  | -  | -         | 4:1   |  |
|   |  |  | -  | -         | SHEET   |  |
|   |  |  | -  | -         | 2 OF 2  |  |
|   |  |  | -  | -         | REV   |  |
|   |  |  | -  | -         | G   |  |