

NOTES :

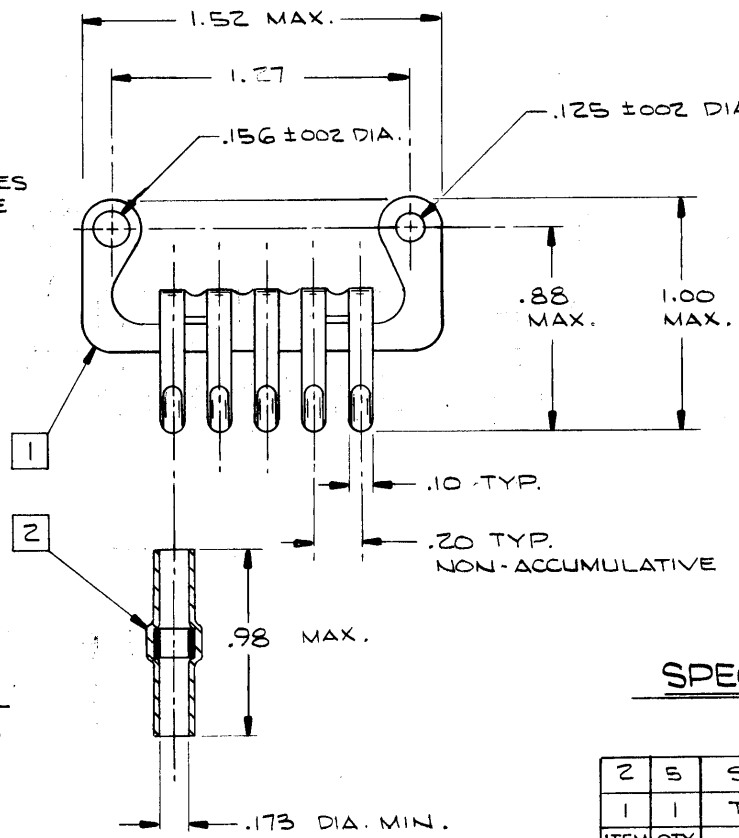
1. THIS KIT IS DESIGNED TO TERMINATE CONDUCTOR SHIELDS TO THE RAYCHEM MTC B SERIES 1-INCH CONNECTOR .

2. BUSS TABS AND SOLDER SLEEVES ARE DESIGNED TO ACCOMODATE THE FOLLOWING SHIELDED CABLE CONSTRUCTIONS :

- 88B111, 20 THRU 26 AWG
- 88B112, 20 THRU 26 AWG
- 88B113, 20 THRU 26 AWG
- 88B114, 20 THRU 26 AWG

3. TERMINATION BUSS MATERIAL :
 .020 THICK BERYLLIUM COPPER ALLOY, TIN PLATED.

4. SOLDER SLEEVE MATERIAL :
 INSULATION SLEEVE - HEAT SHRINKABLE RADIATION CROSS-LINKED MODIFIED POLYVINYLIDENE FLUORIDE , TRANSPARENT BLUE .
 FLUXED SOLDER PREFORM - SN63, SRAP PER QQ-5-571.



REVISIONS			
LTR	DESCRIPTION	DATE	APPROVED
C	SEE HISTORY FILE	16 MAR 75	JLK

SPECIFICATION CONTROL DRAWING

2	5	SOLDER SLEEVE	
1	1	TERMINATION BUSS	
ITEM QTY		DESCRIPTION	
DRAWN		CRN:11-8-75	RAYCHEM <small>RAYCHEM CORPORATION 300 CONSTITUTION DRIVE MENLO PARK, CALIFORNIA 94025</small>
CHECKED			
APPROVED		JLK 12/17/75	
APPROVED			
APPROVED			
MATERIAL		TITLE	
FINISH		SHIELD TERMINATION KIT MTC B SERIES CONNECTOR	
PART NO.		SIZE	CODE IDENT.
PROJECT		B	NO. 06090
PROJECT		DWG. NO.	D-659-0021
PROJECT		SCALE	WEIGHT 1/8 OZ MAX
PROJECT		SHEET	1 OF 1

UNLESS OTHERWISE SPECIFIED DIMENSIONS ARE IN INCHES AND TOLERANCES ARE:
 .XXX : ±
 .XX : ±
 .X : ±
 — : ±

If this document is printed it becomes uncontrolled. Check for the latest revision.