

THIS DRAWING IS UNPUBLISHED

RELEASED FOR PUBLICATION

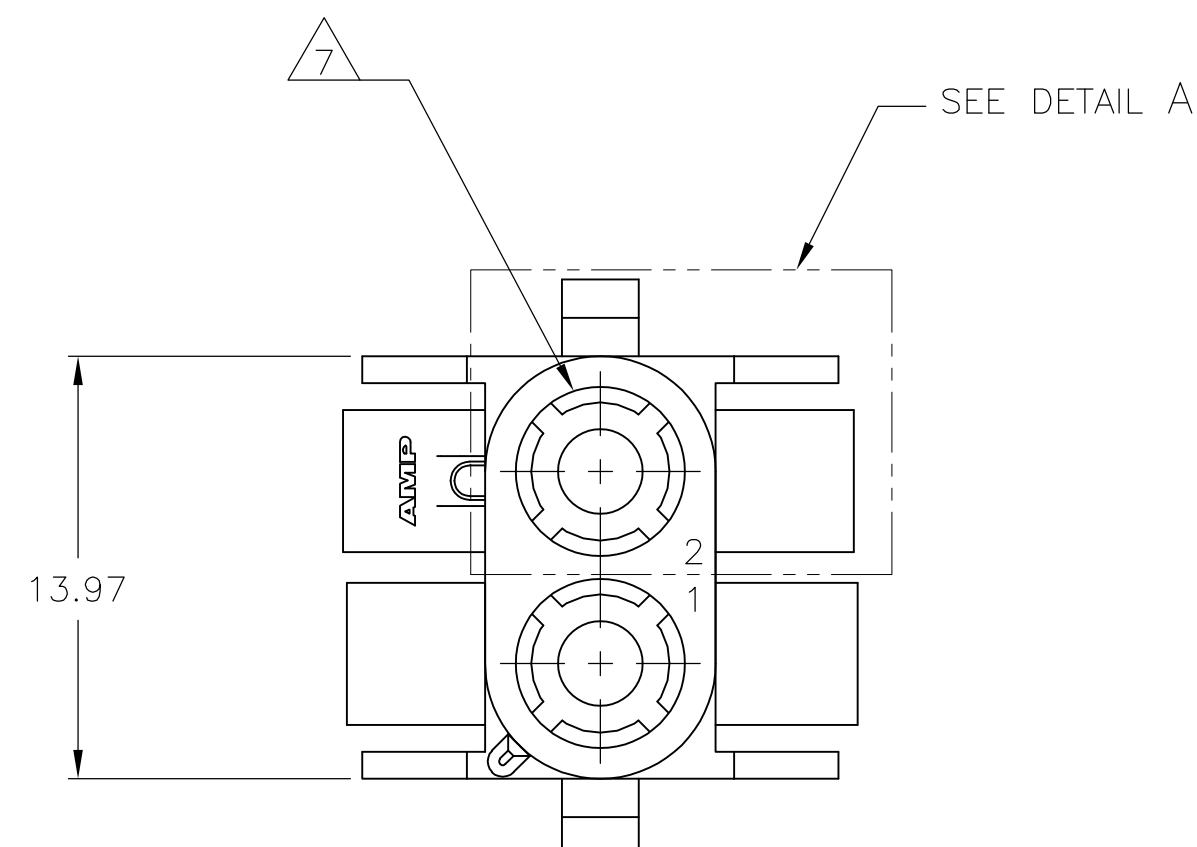
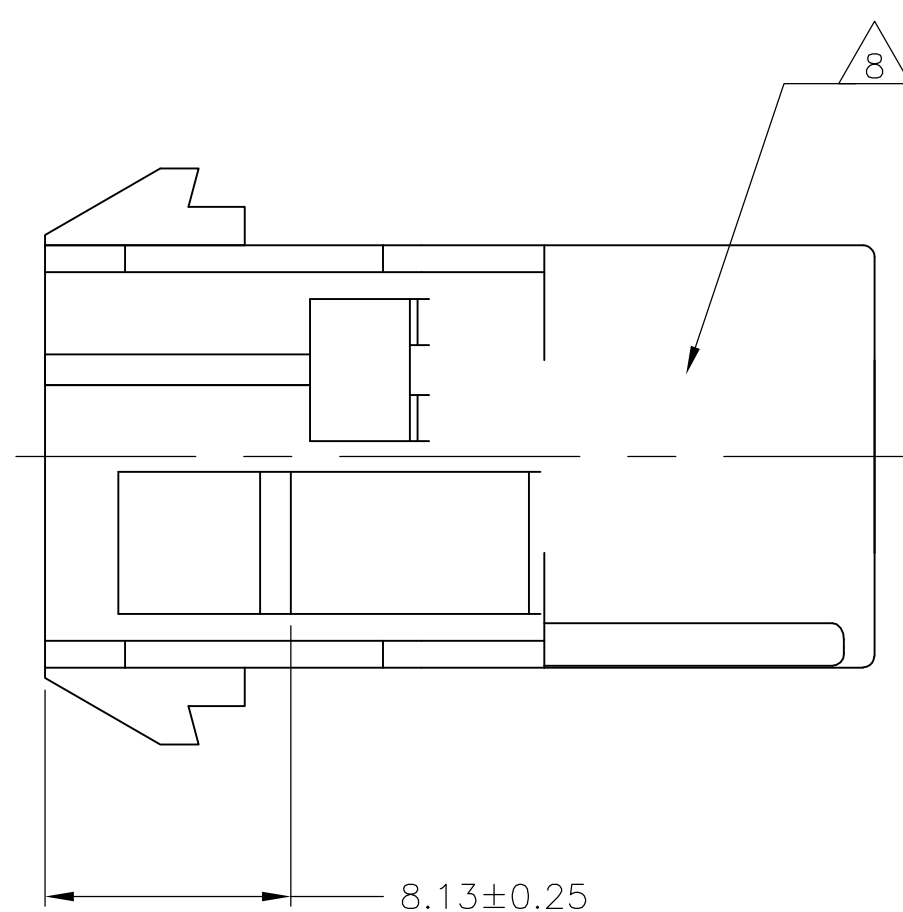
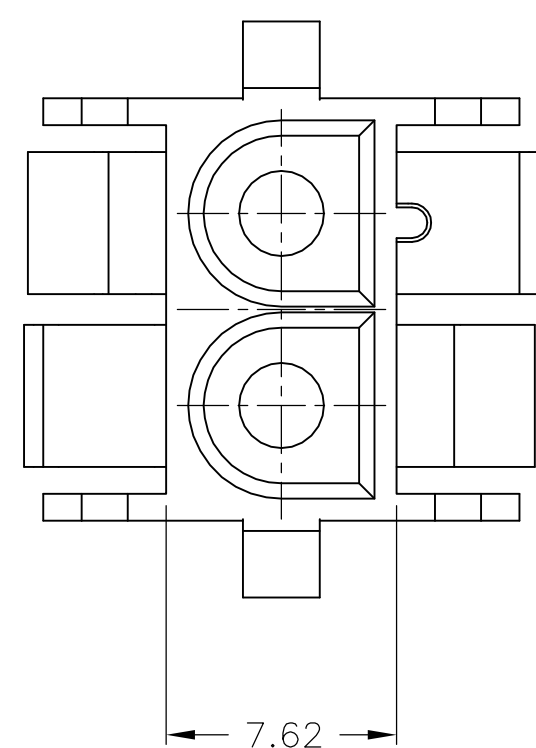
© COPYRIGHT

By

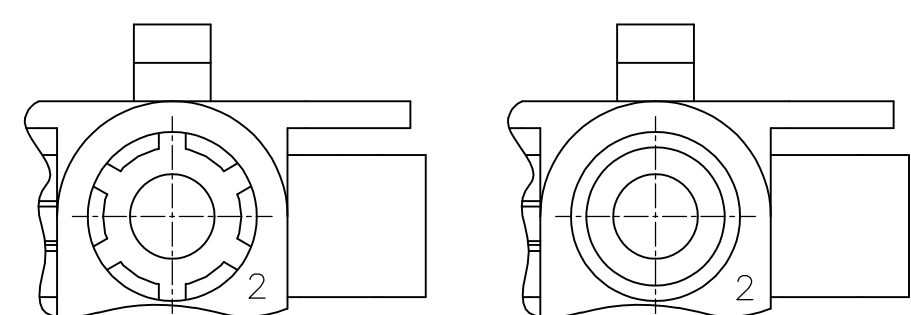
ALL RIGHTS RESERVED

## REVISIONS

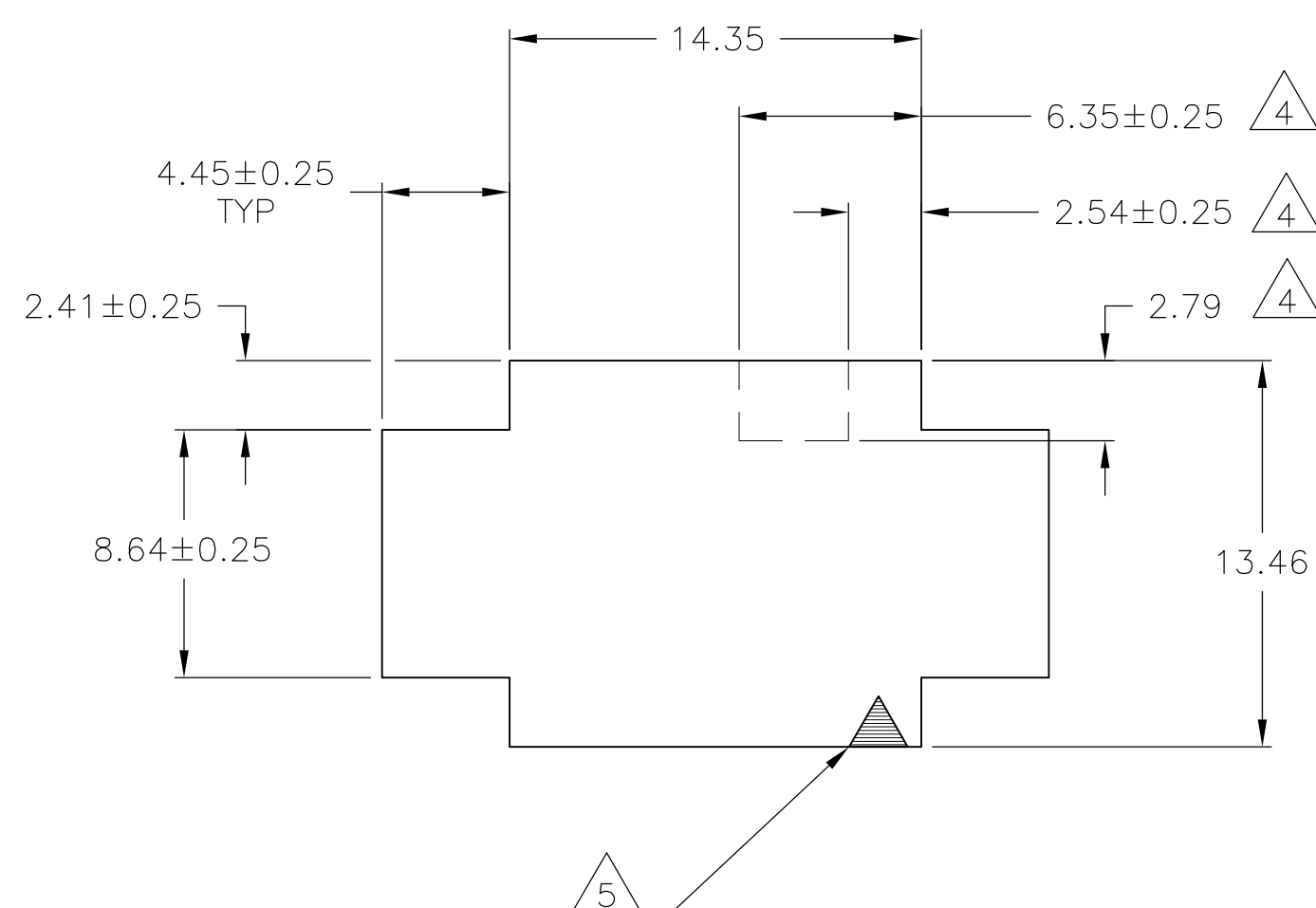
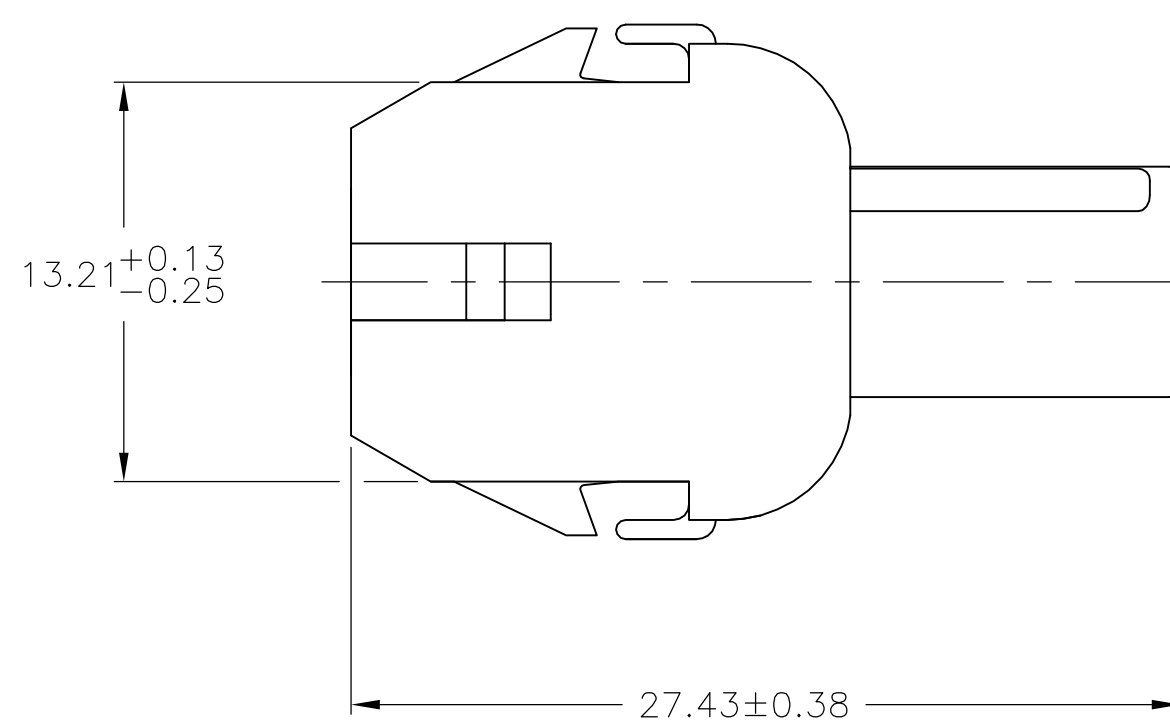
P	LTR	DESCRIPTION	DATE	DWN	APVD
	A4	REVISED PER ECO-17-011927	22AUG2017	RS	KR



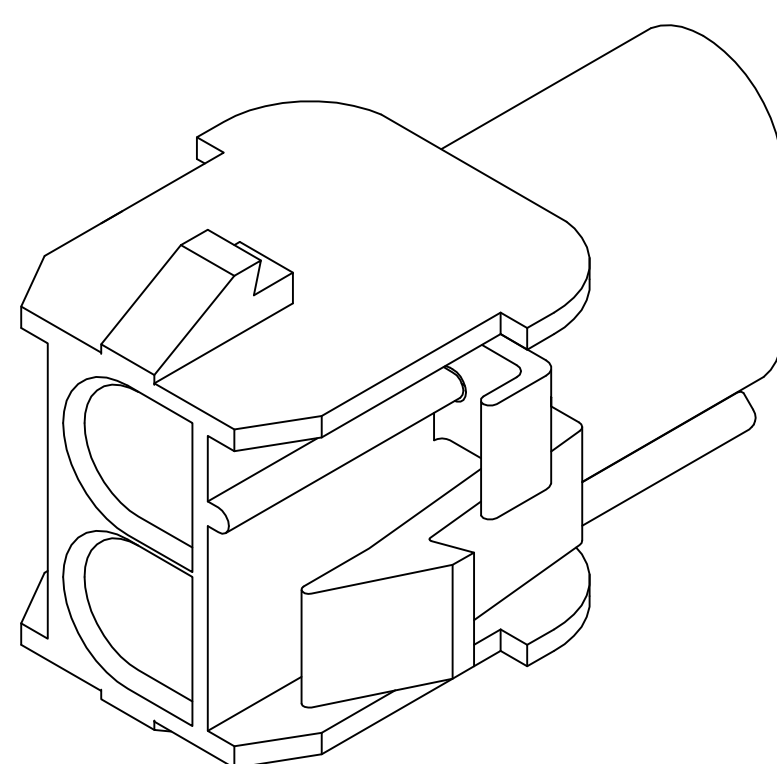
- 1 MATES WITH APPROPRIATE UNIVERSAL MATE-N-LOK™ PLUG.
- 2 RECOMMENDED PANEL THICKNESS 0.76 – 2.29.
- 3 PANEL MUST BE PUNCHED SO THAT THE HOUSING ENTERS THE PANEL IN THE SAME DIRECTION AS THE PUNCH.
- 4 OPTIONAL FOR KEYING HOUSING IN PANEL.
- 5 CIRCUIT NUMBER 1 LOCATION.
- 6 DIMENSIONS SHOWN REPRESENT PRODUCT IN DRY, AS MOLDED CONDITION ADDITIONAL 2% GROWTH DUE TO SUBSEQUENT MOISTURE ABSORPTION MAY OCCUR AND SHOULD BE ACCOUNTED FOR.
- 7 FOUR RIBS EQUALLY SPACED, NO SPECIFIC ORIENTATION. NO RIBS OR SIX RIBS EQUALLY SPACED, NO SPECIFIC ORIENTATION, OPTIONAL.
- 8 UNDERWRITERS RECOGNIZED COMPONENT LOGO AND CSA CERTIFICATION LOGO TO BE LOCATED ONCE EACH ON SIDE OF HOUSING.
- 9 MAX. OPERATING TEMPERATURE 125°C.
- 10 SPECIAL PACKAGING.
- 11 PHOSPHOR BRONZE CONTACTS SHOULD ALWAYS BE USED WITH THIS HOUSING.



DETAIL A  
OPTIONAL CONSTRUCTIONS



RECOMMENDED PANEL CUT-OUT



### 3 DIMENSIONAL MODEL NTS



4.45	.175	27.43	1.080
2.79	.110	14.35	.565
2.54	.100	13.97	.550
2.41	.095	13.46	.530
2.29	.090	13.21	.520
0.76	.030	8.64	.340
0.38	.015	8.13	.320
0.25	.010	7.62	.300
0.13	.005	6.35	.250
MM	IN	MM	IN

## CONVERSION TABLE

10	BLACK	8-794815-1
	BLACK	794815-1
	COLOR	PART NO.



TE Connectivity

THIS DRAWING IS A CONTROLLED DOCUMENT.		DWN: K. WHITAKER 15MAY01 DRW: S. RIDGILL 15MAY01 APVD: S. RIDGILL 15MAY01		 TE Connectivity		
DIMENSIONS: mm [INCHES]	TOLERANCES UNLESS OTHERWISE SPECIFIED:	NAME	CAP, 2 CIRCUIT, UNIVERSAL MATE-N-LOK TM			
	0 PLC ± — 1 PLC ± 0.13 2 PLC ± — 3 PLC ± — 4 PLC ± — ANGLES ± 190°		PRODUCT SPEC	—		
	APPLICATION SPEC		—			
MATERIAL NYLON, UL 94V-2, HIGH TEMP.	FINISH	SIZE	CAGE CODE	DRAWING NO	RESTRICTED TO	
	—	WEIGHT	A1	C0779	C-794815	—
CUSTOMER DRAWING		SCALE	4:1	SHEET	1 OF 1	REV. A.4