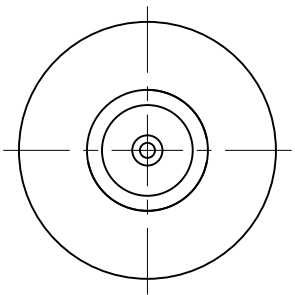
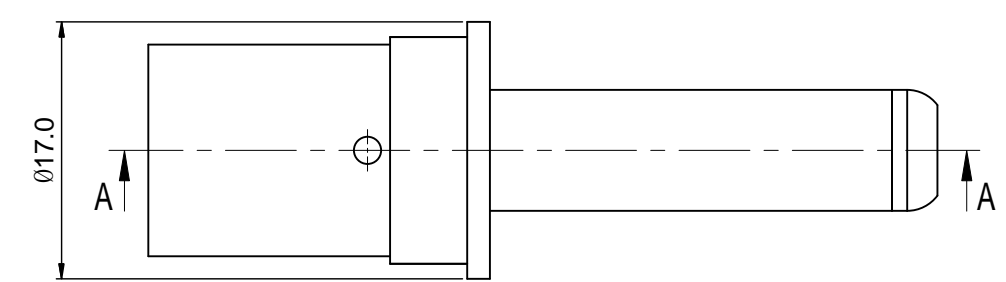
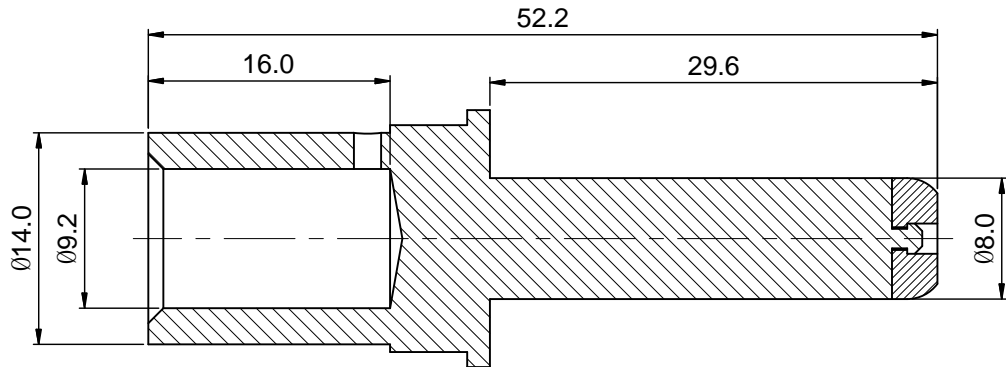


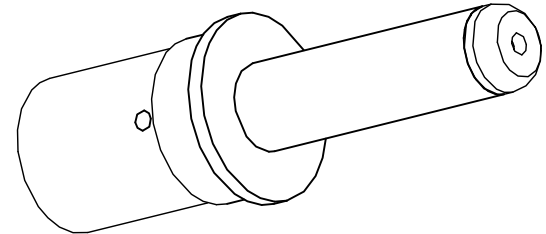
REVISIONS					
REV	ECO	DESCRIPTION	DATE	BY	APPR
B1	-	RELEASE NEW DWG FORMAT	08/22/14	DRACK	TOMMY




- NOTES: UNLESS OTHERWISE SPECIFIED
- MATERIAL: COPPER ALLOY, SILVER PLATED
  - SPECIFICATIONS:
    - 2.1 RATED CURRENT: 130 AMPS
    - 2.2 CONTACT RESISTANCE: <0.3 MILLIOHM
    - 2.3 AVAILABLE WIRE RANGE: 35 MM<sup>2</sup>
    - 2.4 RoHS COMPLIANT
  - ALL DIMENSIONS ARE FOR REFERENCE USE ONLY.



SECTION A-A



	SEE PART NUMBER		
	CHART		
QUANTITY	PART NUMBER	DESCRIPTION	ITEM
MATERIALS LIST			
<div>UNLESS OTHERWISE SPECIFIED</div> <div>1) All dimensions are in metric(mm).</div> <div>2) Tolerances are as follows:</div> <div>1 PL DEC ±0.30</div> <div>2 PL DEC ±0.15</div> <div>3 PL DEC ±0.08</div> <div>Fractions ±1/64</div> <div>Angles ±1°</div> <div>3) Note reference = </div>		<div>SIGNATURES</div> <div>DRAWN: Drack</div> <div>CHECKED:</div> <div>ENGINEER:</div> <div>APPROVAL:</div> <div>CUSTOMER:</div> <div>THIS DRAWING IS SUPPLIED FOR INFORMATION ONLY. DESIGN FEATURES, SPECIFICATIONS AND PERFORMANCE DATA SHOWN HEREON ARE THE PROPERTY OF THE AMPHENOL CORPORATION. NO RIGHTS OF REPRODUCTION ARE IMPLIED. ALL DIMENSIONS ARE SUBJECT TO NORMAL MANUFACTURING VARIATIONS.</div>	<div>DATE</div> <div>08/22/14</div>
MATERIAL SPECIFICATIONS:		<div>Amphenol</div> <div>Sine Systems - <a href="http://www.amphenol-sine.com">www.amphenol-sine.com</a></div> <div>44724 Morley Drive</div> <div>Clinton Township, MI 48036</div>	
PROCESS SPECIFICATIONS:		ECO-MATE,8MM PIN CONTACT,CRIMP 35MM <sup>2</sup>	
NEXT ASSY:		<div>SIZE</div> <div>B</div>	<div>TYPE</div> <div>C-</div>
		<div>DWG NO:</div> <div>HP35CCS</div>	<div>REVISION</div> <div>B1</div>
		<div>SCALE:</div> <div>2 : 1</div>	<div>SHEET</div> <div>1</div> <div>OF</div> <div>1</div>

TITLE: ECO-MATE,8MM PIN CONTACT,CRIMP 35MM<sup>2</sup> DWG NO: HP35CCS REV: B1 SH: 1 OF: 1