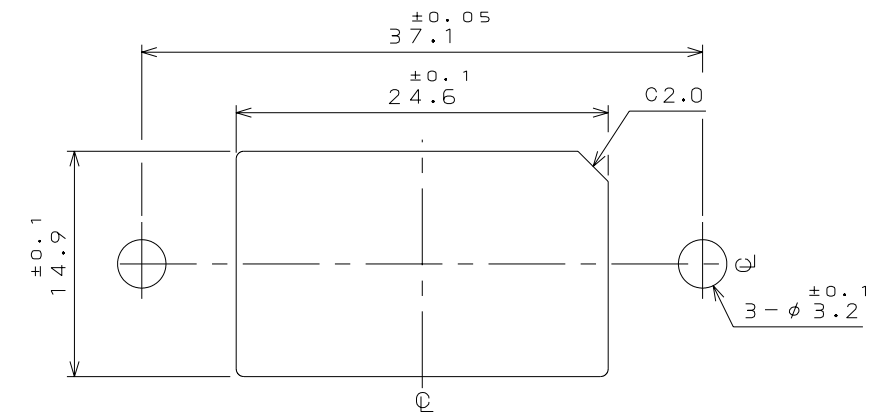
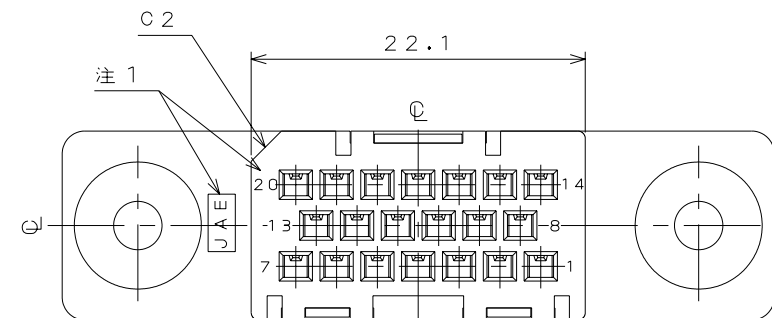
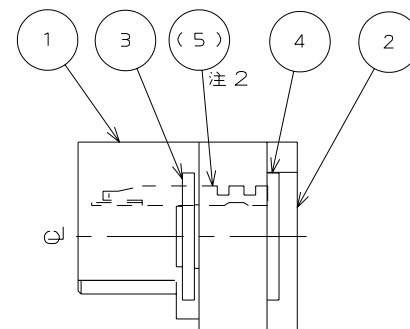


Technical drawing of a mechanical assembly (Fig. 1.10) showing a side view. The drawing includes a central shaft with a pulley and a gear, and a base with a slot. Dimensions are given in millimeters: total width  $14.5 \pm 0.8$ , base width  $12.5$ , and a central slot width of  $4.5 \pm 0.2$ .



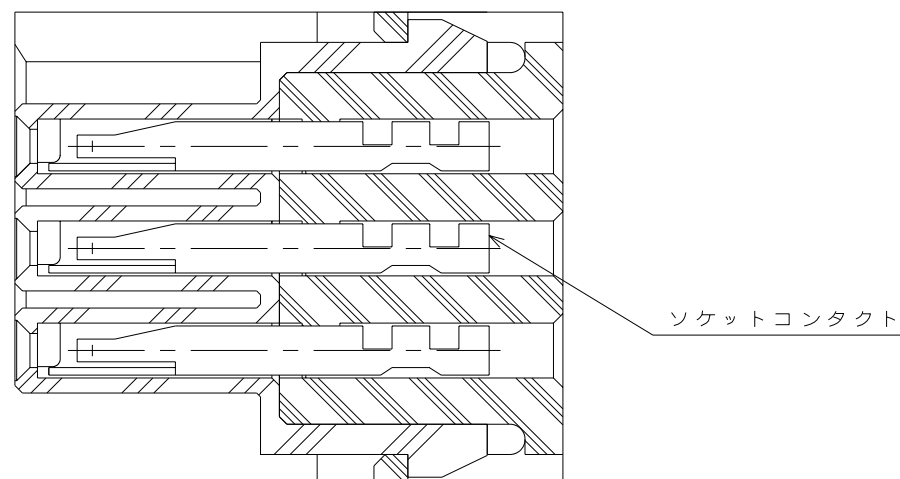
Technical drawing of a 24-pin D-sub connector. The drawing shows a top view of the connector with dimensions in millimeters. The overall width is 47.1 mm, and the overall height is 12.5 mm. The pin pitch is 2.7 mm. The drawing includes a 2x12 grid of pins, with dimensions for the pin array (22.2 mm width, 13.5 mm height) and the mounting holes (16.2 mm width, 13.5 mm height). The mounting holes have a diameter of 3.2 mm. The drawing also shows the dimensions for the mounting holes (12.5 mm diameter) and the overall dimensions (47.1 mm width, 12.5 mm height). The drawing is labeled with dimensions in millimeters and includes a note for the pin pitch (ピッチ).



注1. 図示の位置に社標及び端子番号が表示される。

- ２．コンタクトは別売品の為、別発注願います。（表１）
- ３．本製品は浮動型コネクタであり、フローティング量は１mmである。

名 称	適 用 電 線	
	電 線 サ イ ズ	仕 上 外 径
D02-22-26S-10000	AWG#26	φ1.1以下



REFERENCE ONLY

**JAE**

JAE CONNECTOR DIV. PROPRIETARY.  
COPYRIGHT (C) 2005, JAPAN AVIATION ELECTRONICS INDUSTRY, LTD.

# Mouser Electronics

Authorized Distributor

Click to View Pricing, Inventory, Delivery & Lifecycle Information:

[JAE Electronics:](#)

[DRA-20SC-F0R](#)