

ALUMILINE® LED FIXTURE

Features

- High Brightness
- Long Life
- Low Power Consumption
- RoHS Compliant
- No UV Emission
- Thermally Optimized
- Low Profile
- IP67
- Mounting Holes for Ease of Installation



Maximum Ratings

Parameter	Symbol	Rating	Units
LED Junction Temperature	T_J	125	°C
Operating Temperature	T_{opr}	-30 ~ +85	°C
Storage Temperature	T_{stg}	-40 ~ +85	°C
Input Voltage	$V_{in DC}$	20 - 35	Volts

Accessories

- ZPS-2435: 24V, 35 Watt Power Supply
- ZPS-2460: 24V, 60 Watt Power Supply
- ZDM-01: PWM LED Dimmer

Note: ZPS-2435 and ZPS-2460 require use of wire nuts for connections.

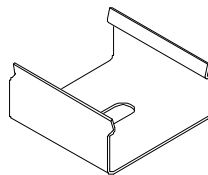
Mating Components



ZWF-1000-I: Input Connector



ZWF-CH-J: Jumper Connector



ZWF-12-C: Mounting Clip

Note

Please refer to JKL Application Sheet **JKL-AS-ZWF-ALUMILINE** for Installation and Power recommendations.

REV. NO.			DESCRIPTION/ECO NUMBER		APPV'D DATE	METRIC		DIMENSIONS ARE MILLIMETER (INCH)		JKL COMPONENTS CORPORATION				
D	ADD PART # ZWF-438-24WW, CHNG. ZWF-438-24CW 26 LEDS TO 24 LEDS		8/7/14			THIRD ANGLE PROJECTION		TOLERANCE UNLESS OTHERWISE SPECIFIED 1 PL +/- REF. 2 PL +/- REF. ANGLE +/- REF.		TITLE ALUMILINE® 24V DC LED FIXTURE				
C	CHANGE PART NO. ZWF-486-24CW TO 438		1/9/13			DRAWN BY L. WENGSTROM		APPV'D BY DATE L.R. 8/7/14		SIZE A	FSCM NO. 55335	DRAWING NO. ZWF-MULTI		
B	ADD PART NO. ZWF-486-24CW ON PG. 2		11/27/12			- CAD DRAWING -		MANUAL REVISIONS NOT PERMITTED		SCALE NONE	RELEASED DATE 6/27/12	REVISION DATE 8/7/14	REV. NO. D	SHEET 1 OF 2
A	CHANGE MOUNTING CLIP PART NO. RELEASE AND CANCEL PL-1206-03		9/18/12 6/27/12											

ALUMILINE® LED FIXTURE

Dimensions



Electro-Optical Characteristics (Ta = 25°C)

COLOR: COOL WHITE 6000K

JKL Part Number	Dimension A ± 5.0mm (±0.2 inch)	Number LEDs	Power (W)	Current (mA)	Lumen Flux (lm)
ZWF-337-24CW	337.0 (13.27)	18	2.9	120	248
ZWF-438-24CW	438.0 (17.24)	24	4.19	173	358
ZWF-638-24CW	638.0 (25.12)	36	5.8	240	469
ZWF-939-24CW	939.0 (36.97)	54	8.7	350	691
ZWF-1239-24CW	1239.0 (48.78)	72	11.6	480	912

COLOR: WARM WHITE 3000K

ZWF-337-24WW	337.0 (13.27)	18	2.9	120	230
ZWF-438-24WW	438.0 (17.24)	24	3.9	162	340
ZWF-638-24WW	638.0 (25.12)	36	5.8	240	435
ZWF-939-24WW	939.0 (36.97)	54	8.7	350	690
ZWF-1239-24WW	1239.0 (48.78)	72	11.6	480	845