

# FLEX STACK

(1.27 mm) .050"

FW-12-05-G-D-530-101

FW-20-05-F-D-610-065

FW-SM SERIES

# SMT MICRO BOARD STACKER

## SPECIFICATIONS

For complete specifications and recommended PCB layouts see [www.samtec.com?FW-SM](http://www.samtec.com?FW-SM)

**Insulator Material:**  
Black Liquid Crystal Polymer  
**Terminal Material:**  
Phosphor Bronze  
**Plating:**  
Sn or Au over 50 μm (1.27 μm) Ni  
**Operating Temp Range:**  
-55 °C to +125 °C  
**RoHS Compliant:**  
Yes

## PROCESSING

**Lead-Free Solderable:**  
Yes  
**SMT Lead Coplanarity:**  
(0.10 mm) .004" max (02-30)  
(0.15 mm) .006" max (31-50)\*  
\*(.004" stencil solution may be available; contact IPG@samtec.com)

## RECOGNITIONS

For complete scope of recognitions see [www.samtec.com/quality](http://www.samtec.com/quality)



FILE NO. E111594

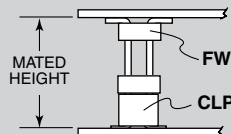
## ALSO AVAILABLE (MOQ Required)

- Smaller stack heights

**Board Mates:**  
CLP, FLE

**Cable Mates:**  
FFSD

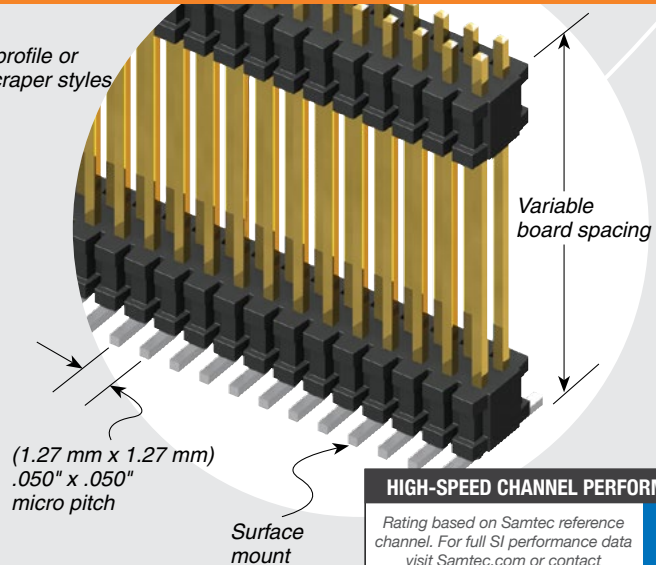
## APPLICATIONS



LEAD STYLE		MATED HEIGHT*
FW	CLP	
FW-XX-03-X-X-233-065	-02	(8.13) .320
FW-XX-03-X-X-303-065		(9.91) .390

\*Processing conditions will affect mated height.

Low-profile or skyscraper styles



## HIGH-SPEED CHANNEL PERFORMANCE

Rating based on Samtec reference channel. For full SI performance data visit [Samtec.com](http://Samtec.com) or contact [SIG@samtec.com](mailto:SIG@samtec.com)

4 Gbps

FW	NO. PINS PER ROW	LEAD STYLE	PLATING OPTION	D	STACKER HEIGHT	POST HEIGHT	OPTION
	02 thru 50	Specify LEAD STYLE from chart	<p><b>-F</b> = Gold flash on post, Matte Tin on tail</p> <p><b>-L</b> = 10 μm (0.25 μm) Gold on post, Matte Tin on tail</p> <p><b>-G</b> = 10 μm (0.25 μm) Gold on post, Gold flash on tail</p>		<p><b>-“XXX”</b> = Stacker Height (in inches)  Example: -250 = (6.35 mm) .250"</p>	<p><b>-“XXX”</b> = Post Height (in inches)  (1.65 mm) .065" minimum  Example: -065 = (1.65 mm) .065"</p>	<p><b>-ES</b> = End Shroud (-075 post height only. Mate only with CLP) (5.46 mm) .215" to (15.49 mm) .610" stacker height only 9 pins/row min.</p> <p><b>-EP</b> = End Shroud with Guide Post (-075 post height only. Mate only with CLP.) (5.46 mm) .215" to (15.49 mm) .610" stacker height only 9 pins/row min.</p> <p><b>-A</b> = Alignment Pin (3 positions min.) (5.46 mm) .215" to (15.75 mm) .620" stacker height only</p> <p><b>-P</b> = Pick &amp; Place Pad (5 positions min.)</p> <p><b>-TR</b> = Tape &amp; Reel (Max overall height = Post+Stacker Height+ Pad+Alignment Pin = .700 (17.78))</p>

LEAD STYLE	STACKER HEIGHT	STACKER + POST
-03	(5.46) to (8.51) .215 to .335	(7.11) to (10.16) .280 to .400
-05	(8.64) to (15.49) .340 to .610	(10.29) to (17.15) .405 to .675

**Notes:**  
For added mechanical stability, Samtec recommends mechanical board spacers be used in applications with gold or selective gold plated connectors. Contact [ipg@samtec.com](mailto:ipg@samtec.com) for more information.

This Series is non-standard, non-returnable.

Due to technical progress, all designs, specifications and components are subject to change without notice.

[WWW.SAMTEC.COM](http://WWW.SAMTEC.COM)

All parts within this catalog are built to Samtec's specifications. Customer specific requirements must be approved by Samtec and identified in a Samtec customer-specific drawing to apply.