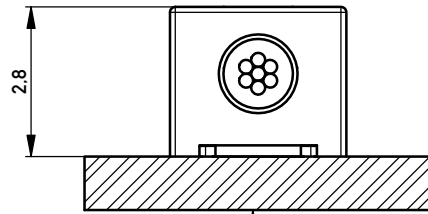
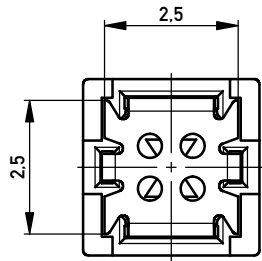
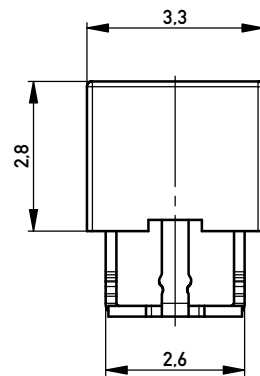
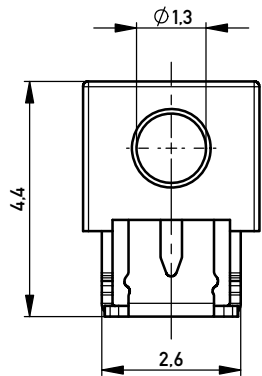
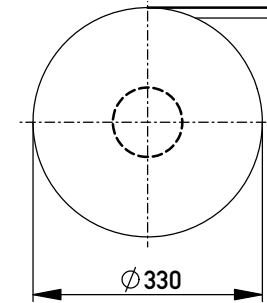


Terminal verpresst
Terminal pressed

Verpackt im Gurt nach DIN IEC 60286-3
Tape on Reel Packaging according to DIN IEC 60286-3
Verpackungseinheit: 2000 Stück
Packaging unit: 2000 pcs

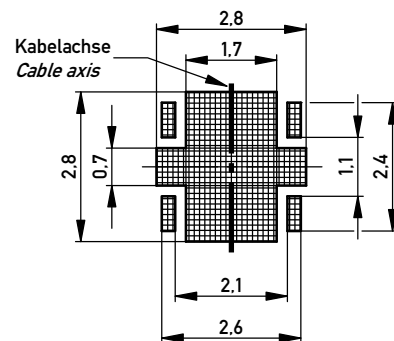
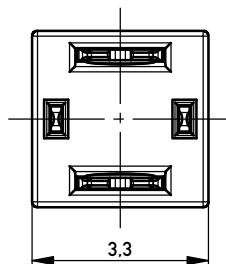
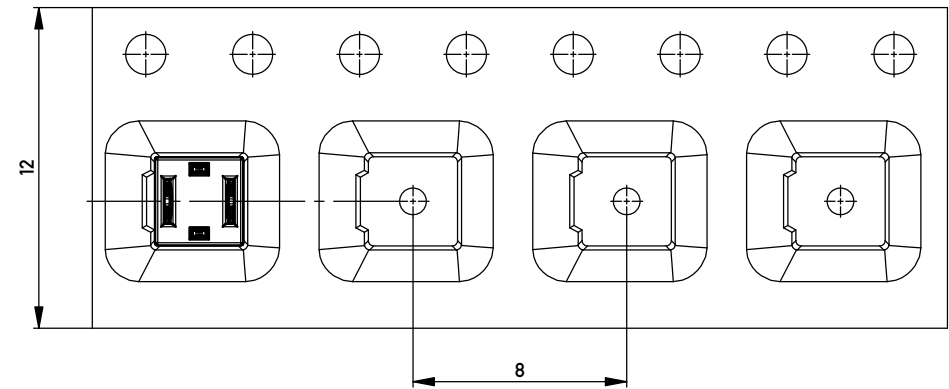


Leiterplatte
PCB




Leiterplatten-Layout Vorschlag
PCB-Layout Proposal

Abspulrichtung - Reel off Direction →



*AWG 22/7 D 1,3 ohne Kabelanschlag
**AWG 22/7 D 1,3 without cable stop*

Information: Farbe: schwarz color: black All rights reserved. Only for Information. To ensure that this is the latest version of this drawing, please contact one of the ERNI companies before using.	Tolerances  All Dimensions in mm	Scale 10:1	
	Subject to modification without prior notice. Drawing will not be updated.	Designation Schneidklemmterminal * <i>IDC-Terminal*</i>	
ERNI www.ERNI.com	474322		I A3
a Index	10.07.2014 Date	Class IDC-TERM	

Copyright by ERNI Production GmbH & Co., KG
 Preparatory notice pursuant to ISD 18(1)6, to be observed.

Mouser Electronics

Authorized Distributor

Click to View Pricing, Inventory, Delivery & Lifecycle Information:

[ERNI Electronics:](#)

[474322](#)