



10135260 - 10X LF

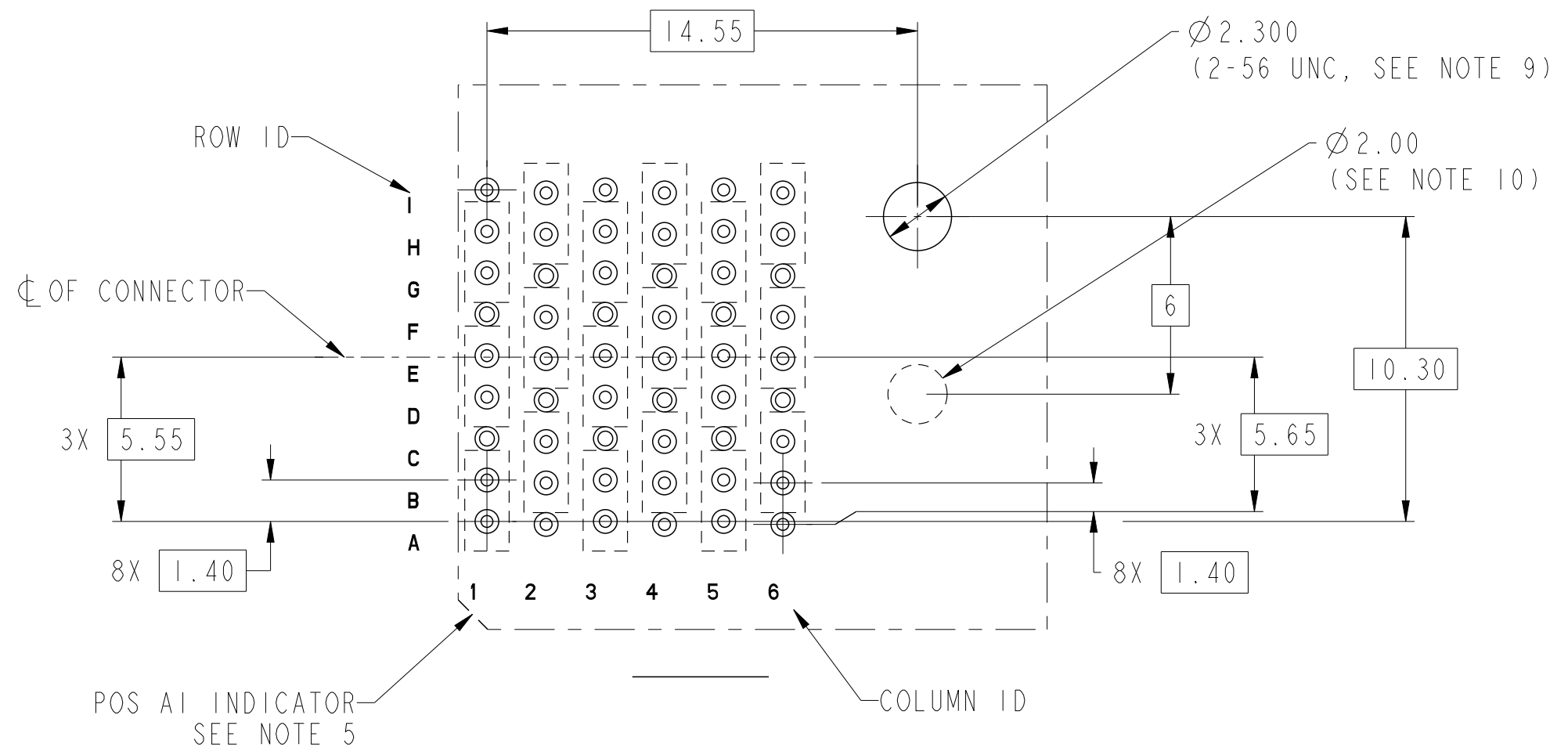
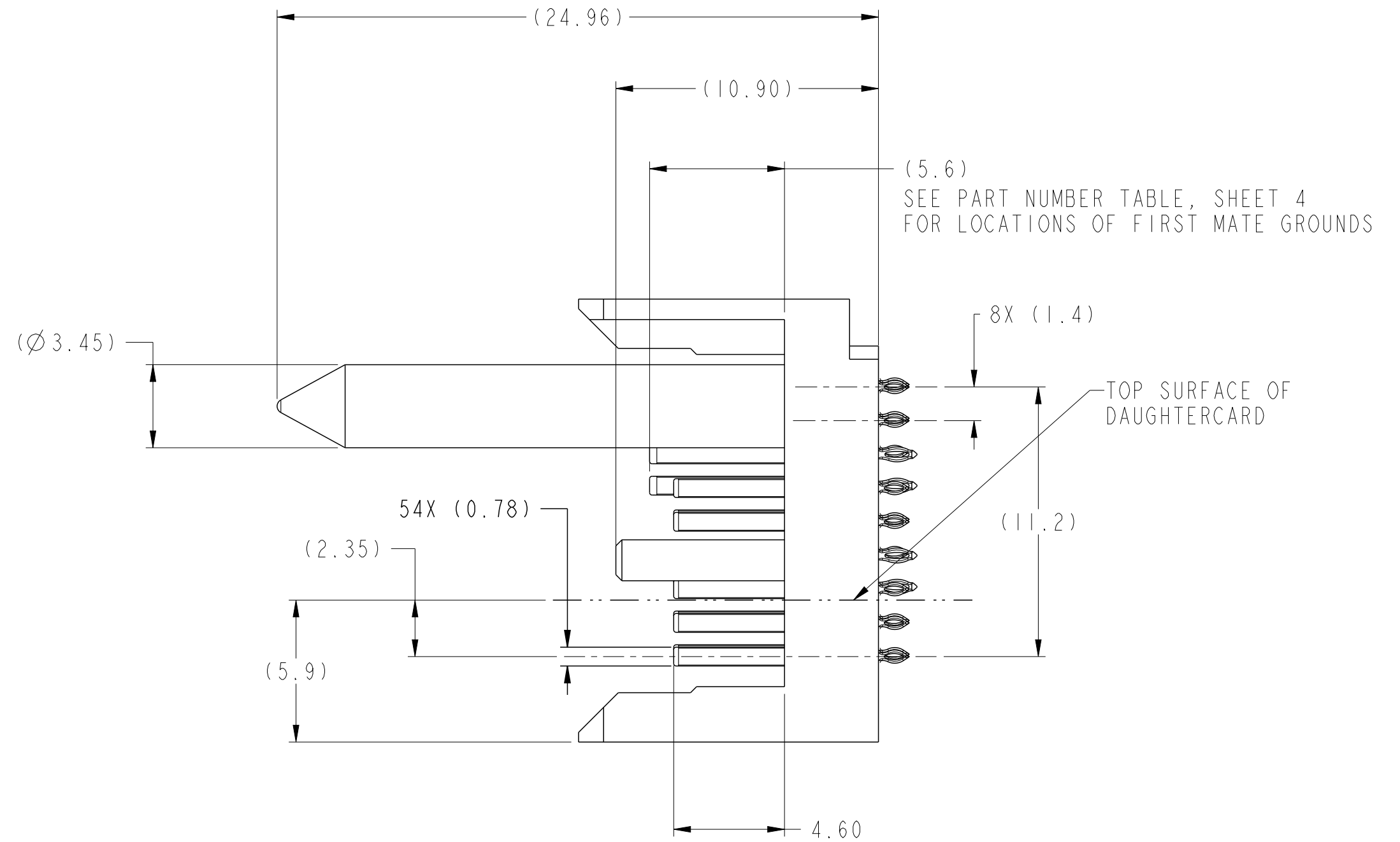
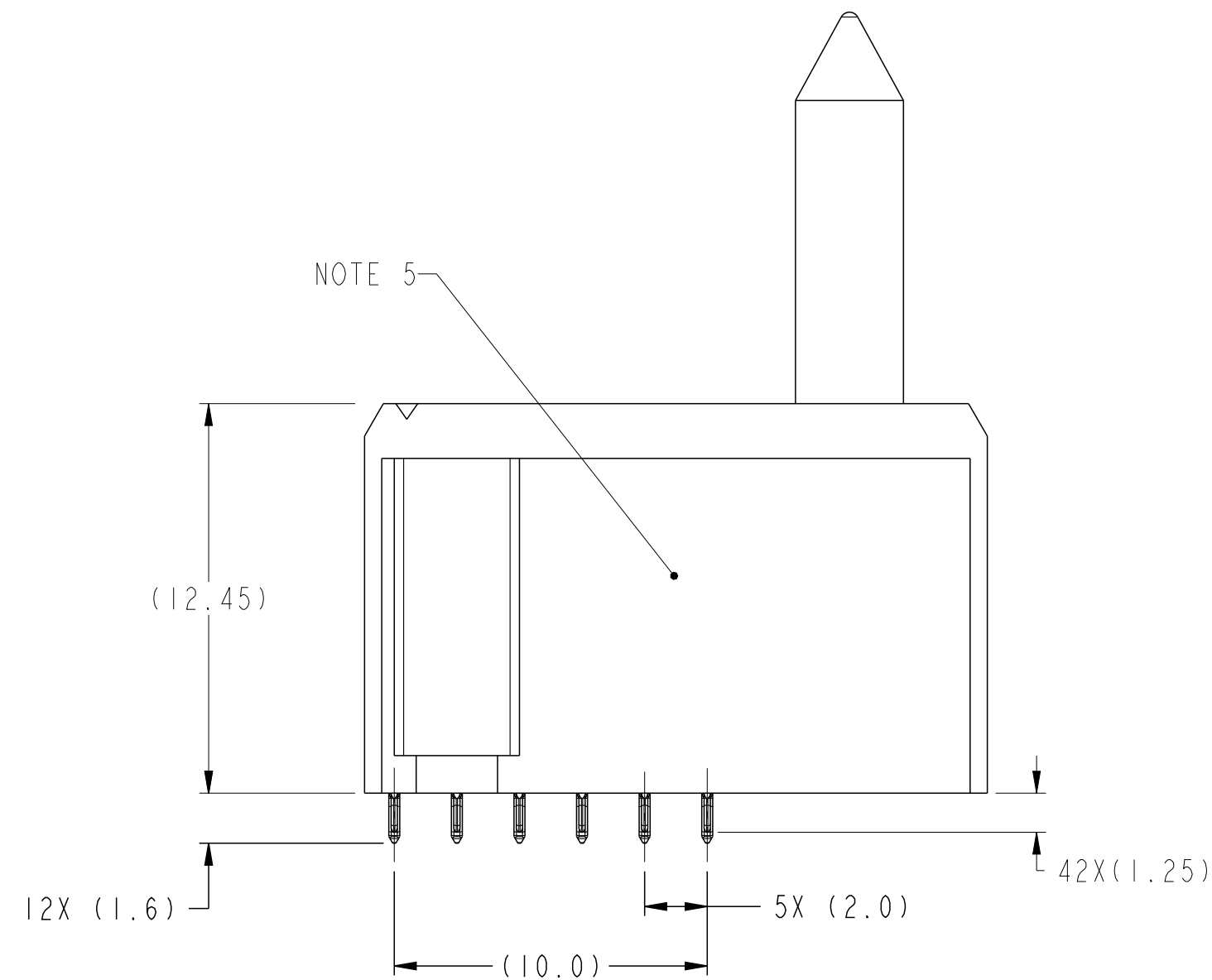
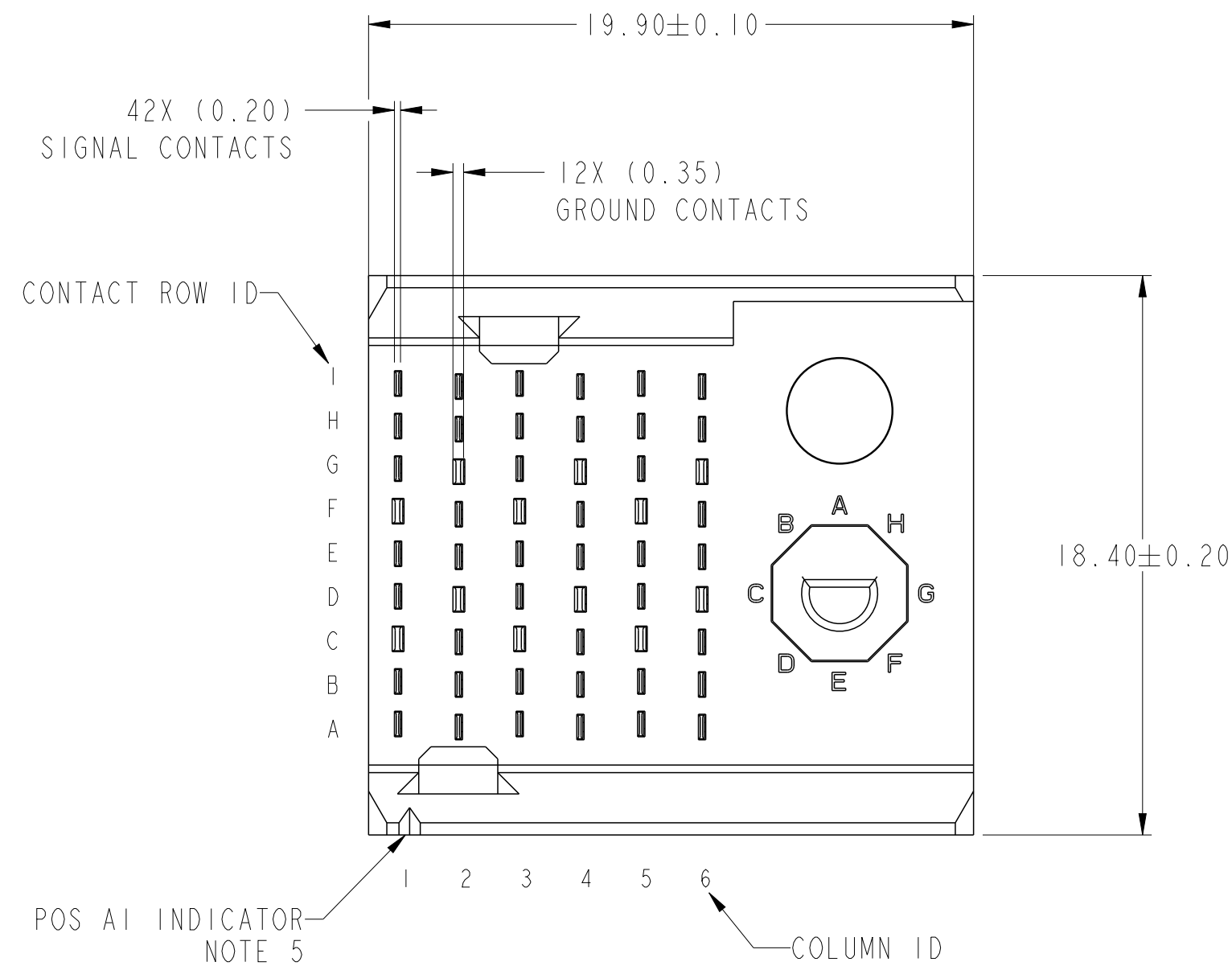
LEAD-FREE DESIGNATION  
ONLY WITH APPLICABLE  
PLATING CODES

SEE NOTE 2


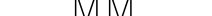
MODULE DESCRIPTION	LETTER DESIGNATION REPRESENTED IN DASH NUMBER										BASE MODULE
LEFT POLARIZING GUIDANCE MODULE (SEE SHEET 3)	N	J (NO KEY)	A	B	C	D	E	F	G	H	
	NO KEY NO GUIDE PIN										
RIGHT POLARIZING GUIDANCE MODULE (SEE SHEET 2)	Z	Y (NO KEY)	P	Q	R	S	T	U	V	W	
	NO KEY NO GUIDE PIN										

spec ref -				dr Jeny Ren		2015/05/15		projection		MM		size A2		scale 5:1	
tolerance std				eng Tao Zhan		2016/05/19						ecn no -		rel level Released	
ASME Y14.5				chr -		2016/05/19									
				appr Pei-Ming Zheng		2016/05/19									
								product family AIRMAX VS2							
surface -		linear		Amphenol FCI		title AIRMAX VERTICAL HEADER		dwg no 10135260		rev A					
												0.X ±0.3			
												0.XX ±0.15			
		0.XXX ±0.050													
ASME Y14.5		angular 0° ±2°		cat. no. -		Product - Customer Drw						sheet 1 of 4			

RIGHT POLARIZING WITH GUIDE

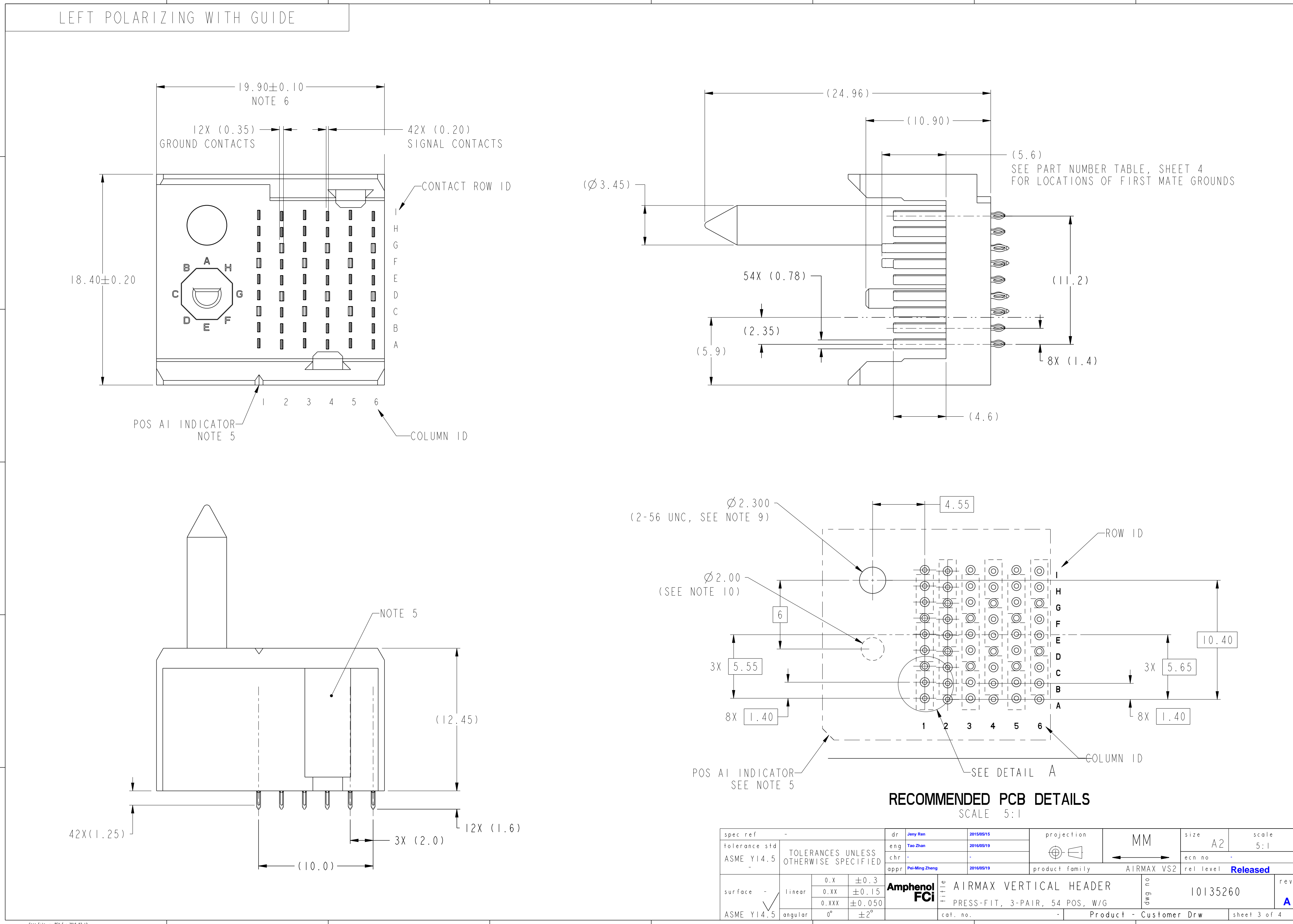


RECOMMENDED PCB DETAILS  
SCALE 5:1

spec ref -		dr Jeny Ren		2015/05/15		projection		MM		size A2		scale 5:1											
tolerance std ASME Y14.5		eng Tao Zhan		2016/05/19						ecn no -													
TOLERANCES UNLESS OTHERWISE SPECIFIED		chr -		-		-		-		rel level		Released											
appr		Pei-Ming Zheng		2016/05/19		product family		AIRMAX VS2															
surface -		linear		0.X ±0.3		±0.15		±0.050		Amphenol FCI		title		AIRMAX VERTICAL HEADER		dwg no		10135260		rev		A	
ASME Y14.5		angular		0°		±2°		cat. no.		-		Product - Customer Drw		sheet 2 of 4									

Amphenol  
FCi

© 2016 AFCi



RECOMMENDED PCB DETAILS  
SCALE 5:1

spec ref	-	dr	Jeny Ren	2015/05/15	projection	MM	size	A2	scale	5:1
tolerance std	ASME Y14.5	eng	Tao Zhan	2016/05/19	chr	-	ecn no	-		
surface	-	appr	Pei-Ming Zheng	2016/05/19	product family	AIRMAX VS2	rel level	Released		
linear	0.X ±0.3 0.XX ±0.15 0.XXX ±0.050	Amphenol FCi	title	AIRMAX VERTICAL HEADER PRESS-FIT, 3-PAIR, 54 POS, W/G	dwg no	10135260	rev	A		
angular	0° ±2°	cat. no.	-	Product - Customer Drw	sheet 3 of 4					

PDS: Rev :A

STATUS:Released

Printed: May 19, 2016

