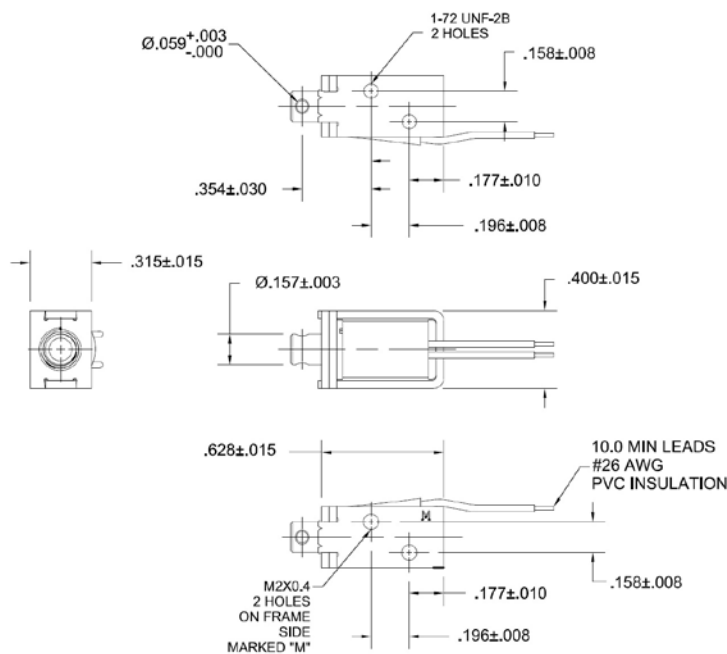


Model B12

DC Pull Box Frame Solenoid

Size: 0.63" L x 0.32" W x 0.40" H

ALL PRODUCTS ARE RoHS COMPLIANT



Solenoid shown energized with plunger fully seated

Part No.	Duty Cycle	Voltage	Resistance (Ω) ± 5%	Max On Time	Power (W)	Current (A)
B12-255-B-3	Intermittent	12 VDC	27.7	11 Secs	5.2	0.43
B12-254-B-3	Continuous	12 VDC	110.8	∞	1.3	0.11
B12-254-B-3	Intermittent	24 VDC	110.8	11 Secs	5.2	0.22
B12-253-B-3	Continuous	24 VDC	443.1	∞	1.3	0.05

Continuous Duty = 100% "On" Time

Intermittent Duty = 25% "On" Time

When ordering please refer to Part No. as listed above

Please consult factory for custom configurations

Stroke (in.)	Typical Pull Force (oz.)								Holding Force (oz.)
	0.010	0.020	0.030	0.040	0.050	0.060	0.080	0.100	
Continuous Duty	3.2	2.0	1.4	0.8	0.5	0.3	0.3	0.2	7.7
Intermittent Duty	9.0	6.5	5.3	4.0	3.6	3.0	18.	1.3	N/A

Additional Specifications:

Dielectric Strength:	500 VRMS
Recommended Heat Sink:	All force values shown are with no heat sink and 20°C ambient temperature
Coil Insulation:	Class "A" - 105°C max temperature
Total Unit Weight:	0.30 oz. / 8.5 g
Plunger Weight:	0.05 oz. / 1.4 g

