

PLEASE CHECK WWW.MOLEX.COM FOR LATEST PART INFORMATION

Part Number: [0705430021](#)
Status: **Active**
Overview: [SL™ Modular Connectors](#)
Description: 2.54mm Pitch SL™ Header, Single Row, Vertical, 3.05mm Pocket, Shrouded, 22 Circuits, 0.38µm Gold (Au) Selective Plating, Tin (Sn) PC Tail Plating

Documents:

3D Model	Test Summary TS-70541-001 (PDF)
Drawing (PDF)	Test Summary TS-70541-100 (PDF)
Product Specification PS-70400 (PDF)	RoHS Certificate of Compliance (PDF)
Product Specification PS-70541 (PDF)	

Agency Certification

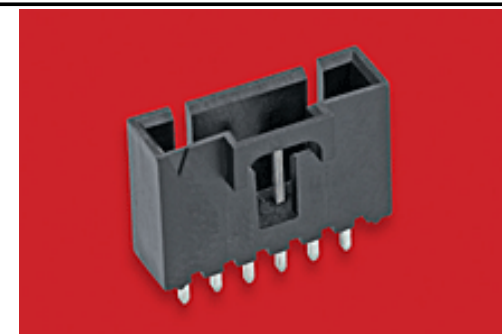
CSA LR19980

General

Product Family	PCB Headers
Series	70543
Application	Signal, Wire-to-Board
Overview	SL™ Modular Connectors
Product Name	SL™
UPC	800755033496

Physical

Breakaway	No
Circuits (Loaded)	22
Circuits (maximum)	22
Color - Resin	Black
Durability (mating cycles max)	50
First Mate / Last Break	No
Flammability	94V-0
Glow-Wire Compliant	No
Guide to Mating Part	No
Keying to Mating Part	None
Lock to Mating Part	Yes
Material - Metal	Brass, Phosphor Bronze
Material - Plating Mating	Gold
Material - Plating Termination	Tin
Material - Resin	High Temperature Thermoplastic
Net Weight	4.122/g
Number of Rows	1
Orientation	Vertical
PC Tail Length	3.30mm
PCB Locator	No
PCB Retention	None
PCB Thickness - Recommended	1.60mm
Packaging Type	Tube
Pitch - Mating Interface	2.54mm
Pitch - Termination Interface	2.54mm
Plating min - Mating	0.381µm
Plating min - Termination	1.905µm
Polarized to Mating Part	Yes
Shrouded	Fully
Stackable	No
Surface Mount Compatible (SMC)	No
Temperature Range - Operating	-40°C to +105°C
Termination Interface: Style	Through Hole



Series image - Reference only

EU ELV

Not Relevant

EU RoHS

Compliant

REACH SVHC

Contains SVHC(2014 December 17): No

Halogen-Free

Status

Not Low-Halogen

Need more information on product environmental compliance?

Email productcompliance@molex.com
Please visit the [Contact Us](#) section for any non-product compliance questions.

China ROHS
ELV

Green Image
Not Relevant

Search Parts in this Series

[70543 Series](#)

Mates With

SL™ Crimp Housing [70066 Option N](#), [70066 Option G](#), [70066 Option A](#), [70430 Option G](#), [70400 Option G](#)

Electrical

Current - Maximum per Contact
Voltage - Maximum

3.0A
250V

Solder Process Data

Lead-free Process Capability

WAVE

Material Info**Reference - Drawing Numbers**

Product Specification
Sales Drawing
Test Summary

PS-70400, PS-70541
SDA-70543-****
TS-70541-001, TS-70541-100

This document was generated on 06/24/2015

PLEASE CHECK WWW.MOLEX.COM FOR LATEST PART INFORMATION