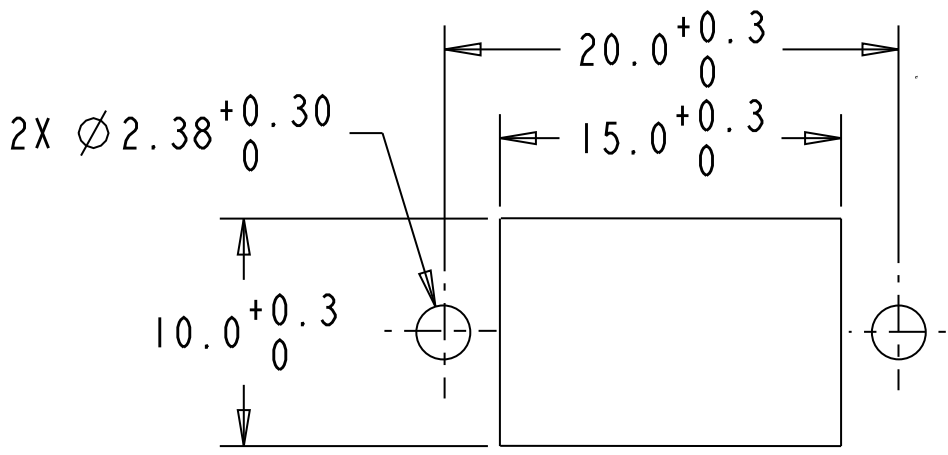
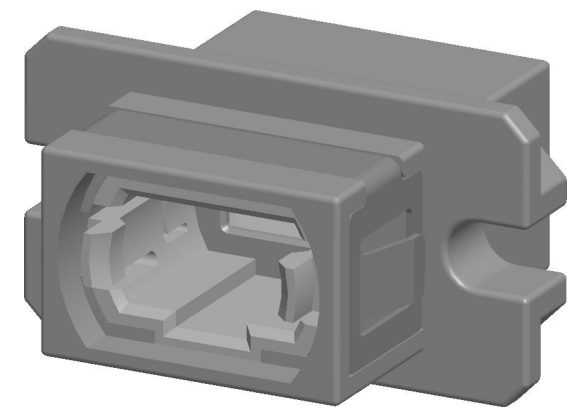
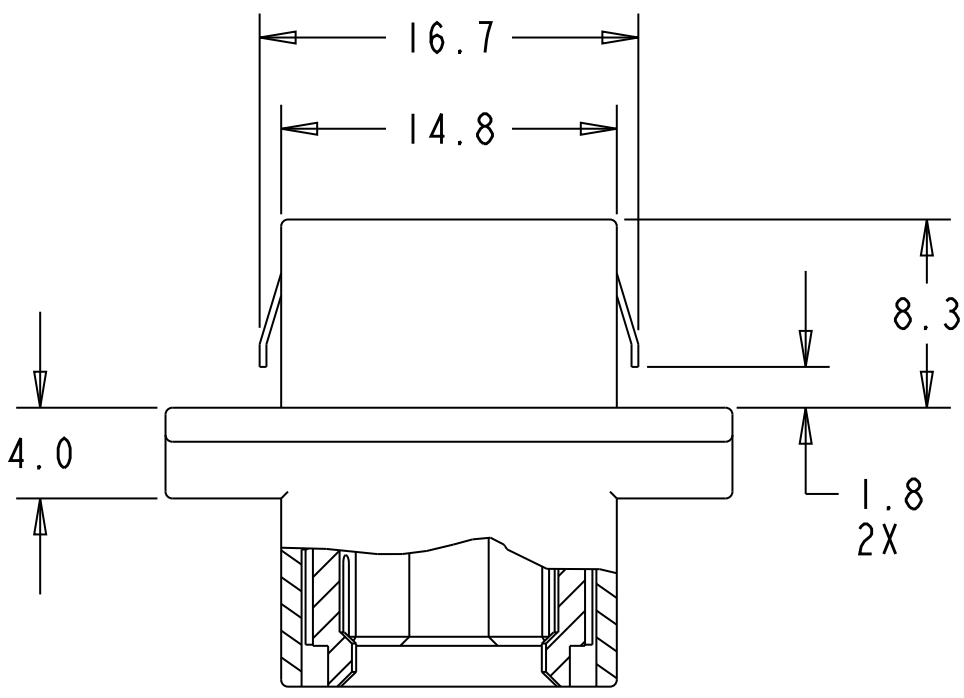


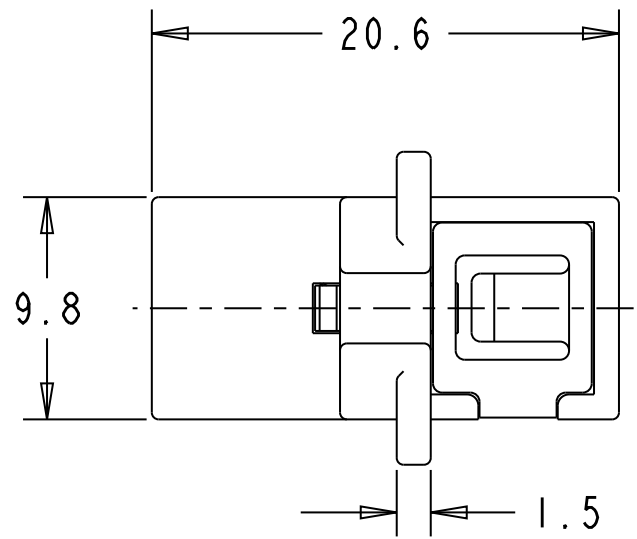
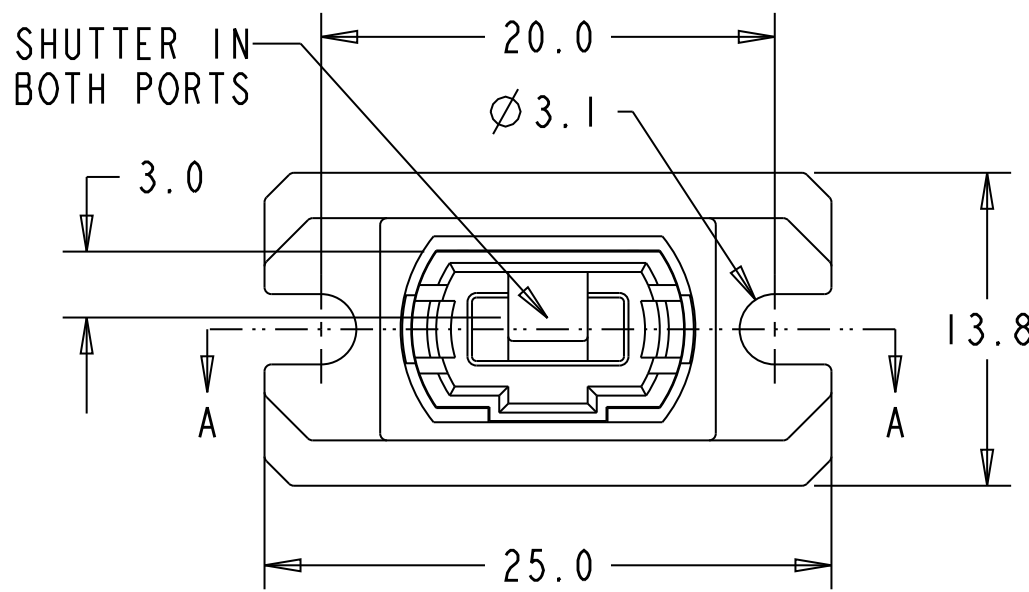
ASSY P/N	SHUTTERS
955-121-5010	NO
955-121-5110	YES

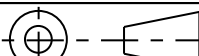
- NOTES:
- 1. DIMENSIONS ARE SHOWN IN MILLIMETERS
 - 2. ADAPTER COMPLIES WITH IEC 61754-7 AND TIA/EIA FOCIS 5 MATING STANDARDS
 - 3. DUST CAPS NOT SHOWN FOR CLARITY
 - 4. ADAPTER AVAILABLE W/ OR W/O SHUTTERS (SHOWN WITH SHUTTERS).
 - 5. SUGGESTED PANEL THICKNESS 1.6mm

- MATERIALS:
- 1. HOUSING & LATCH: DIE CAST ZINC, PLATED Ni OVER Cu
 - SHUTTER & MOUNTING CLIP: STAINLESS STEEL
 - DUST CAP: PVC, RATED UL94V-0



SUGGESTED PANEL CUTOUT



UNLESS OTHERWISE SPECIFIED TOLERANCE TO BE		NOTICE: These drawings, specifications, or other data (1) are remain the property of Amphenol Corporation. (2) must be returned upon request; and (3) are confidential and are not to be disclosed to any person other than those to whom they are given by Amphenol Corporation, or by any other person to anyone for any purpose is not to be regarded by implication or otherwise as in any manner licensing, granting rights or permitting such holder or any other person to manufacture, use or sell any products, process or design, patented or otherwise, that may in any way be related to or disclosed by said drawing, specifications or other data.				A	FIRST ISSUE	SG	10/10/08	E08-0947	
						REV.	DESCRIPTION	APVD.	DATE	ECO NO.	
LINEAR	ANGULAR	MATERIAL:	DRN: M. WANG	DATE: 10-7-08	TITLE: ADAPTER, MPO, DIE CAST, STANDARD FLANGE	<div>Amphenol</div> <div>FIBER OPTIC PRODUCTS</div> <div>1925A Ohio Street, Lisle, IL 60532, USA</div>					
X ± .2	X ± 1°										
X.X ± .1	X.X ± .5°										
X.XX ± .05	X.XX ± .10°	FINISH:	CKD: D. BALTRUKONIS	DATE: 10-8-08	DRAWING NO. 955-121-5X10	SHEET 1 OF 1					
BREAK ALL SHARP EDGES AND REMOVE ALL BURRS		REFERENCE:	APVD: S. HAMILTON	DATE: 10-8-08							
GD SYMBOLS PER ASME Y14.5M-1994											
DO NOT SCALE DRAWING											
DIMENSIONS ARE IN MILLIMETERS		 THIRD ANGLE PROJECTION		SCALE: 3:1	PART NO: SEE TABLE	SIZE: B					