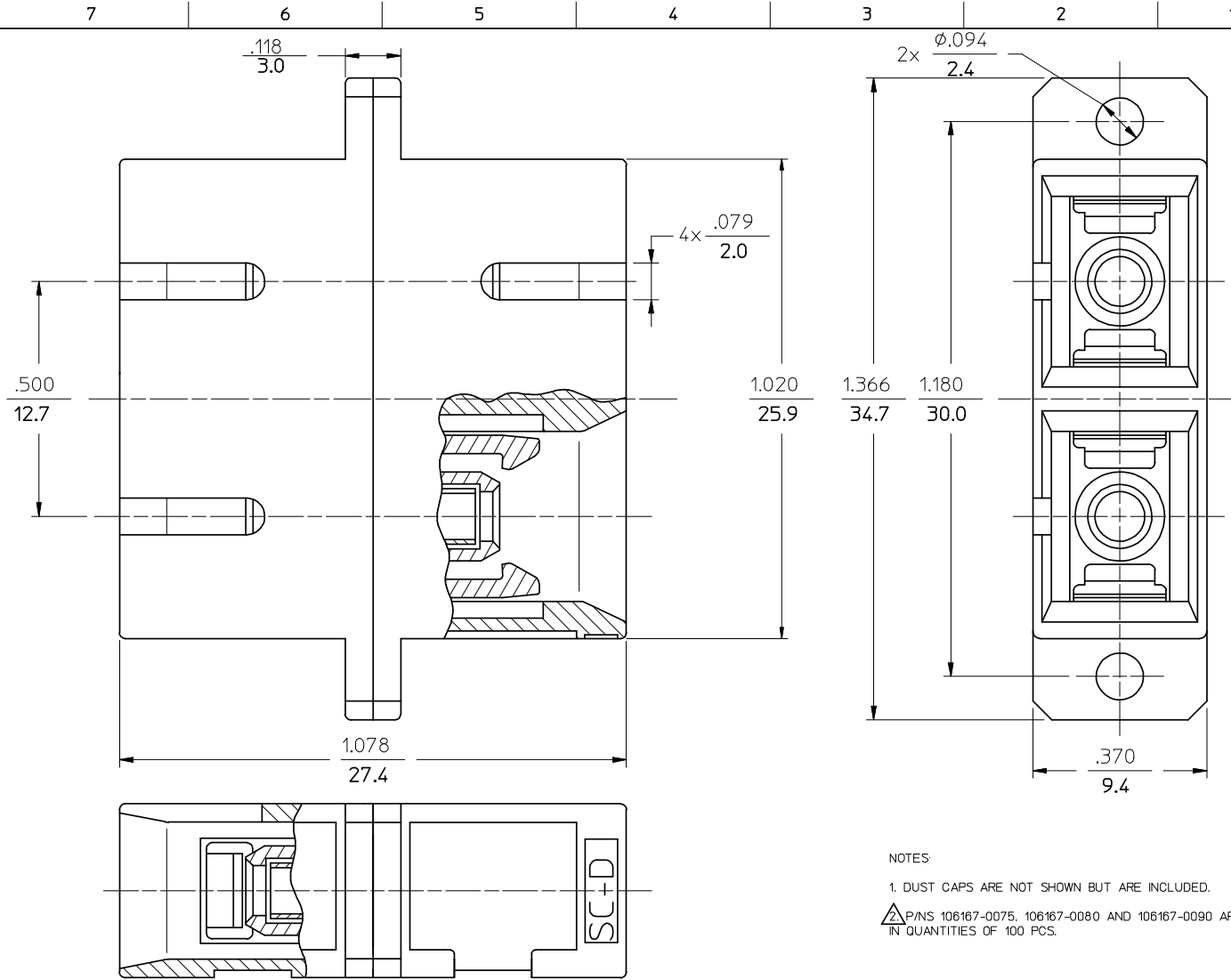
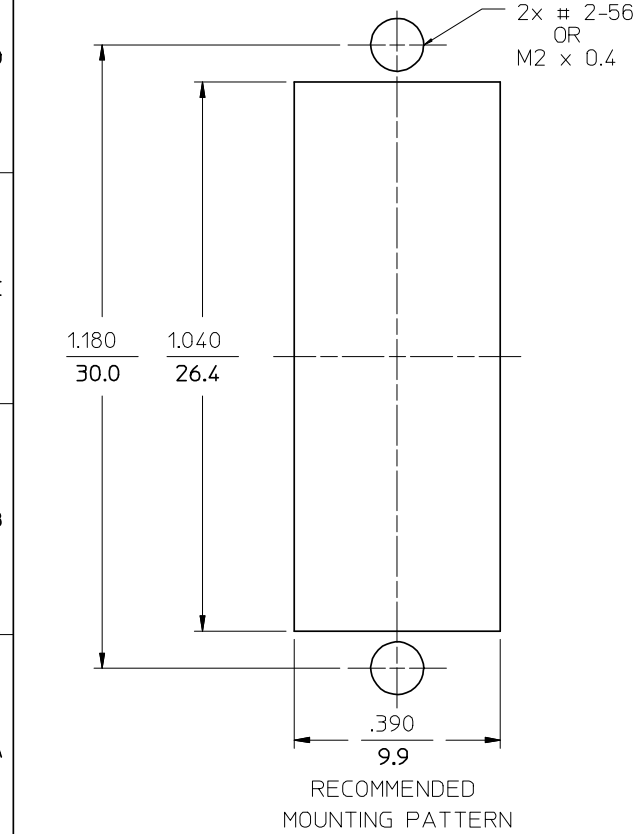


P/N OF ADAPTER	MATERIAL OF SLEEVE	TYPE	COLOR	
106166-0000	ZR	SINGLE MODE	BLUE	
106167-0000	PHOSPHOR BRONZE			
106167-0090	PHOSPHOR BRONZE			
106166-0010	ZR	MULTIMODE	BEIGE	
106167-0010	PHOSPHOR BRONZE		BLACK	
106166-0030	ZR			
106167-0030	PHOSPHOR BRONZE	SINGLE MODE	RED	
106166-0040	ZR		APC	GREEN
106167-0040	PHOSPHOR BRONZE			
106166-0050	ZR	MULTIMODE	AQUA	
106167-0050	PHOSPHOR BRONZE		BEIGE	
106167-0070	PHOSPHOR BRONZE			
106167-0075	PHOSPHOR BRONZE			
106167-0080	PHOSPHOR BRONZE			



NOTES

- DUST CAPS ARE NOT SHOWN BUT ARE INCLUDED.

P/N'S 106167-0075, 106167-0080 AND 106167-0090 ARE BULK PACKED IN QUANTITIES OF 100 PCS.

ENTER DESCRIPTION EC NO: MF2008-0519 DRAWN: KPEVZNER CHKD: 2008/05/22 APPR: LGUMIN 2008/05/27	QUALITY SYMBOLS = 0 = 0	GENERAL TOLERANCES (UNLESS SPECIFIED)		DIMENSION STYLE IN/MM	SCALE 4:1	DESIGN UNITS INCH	THIRD ANGLE PROJECTION		
		4 PLACES ±--- ±---	mm INCH	DRAWN BY RPACIFICI	DATE 2006/01/24	TITLE DUPLEX ADAPTER (SC-D)			
		3 PLACES ±--- ±---		CHECKED BY DATE					
		2 PLACES ±--- ±---		APPROVED BY DATE					
		1 PLACE ±--- ±---		MATERIAL NO. SEE TABLE		DOCUMENT NO. SD-10616X-00X0		SHEET NO. 1 OF 1	
ANGULAR ±1/2°		DRAFT WHERE APPLICABLE MUST REMAIN WITHIN DIMENSIONS		THIS DRAWING CONTAINS INFORMATION THAT IS PROPRIETARY TO MOLEX INCORPORATED AND SHOULD NOT BE USED WITHOUT WRITTEN PERMISSION					