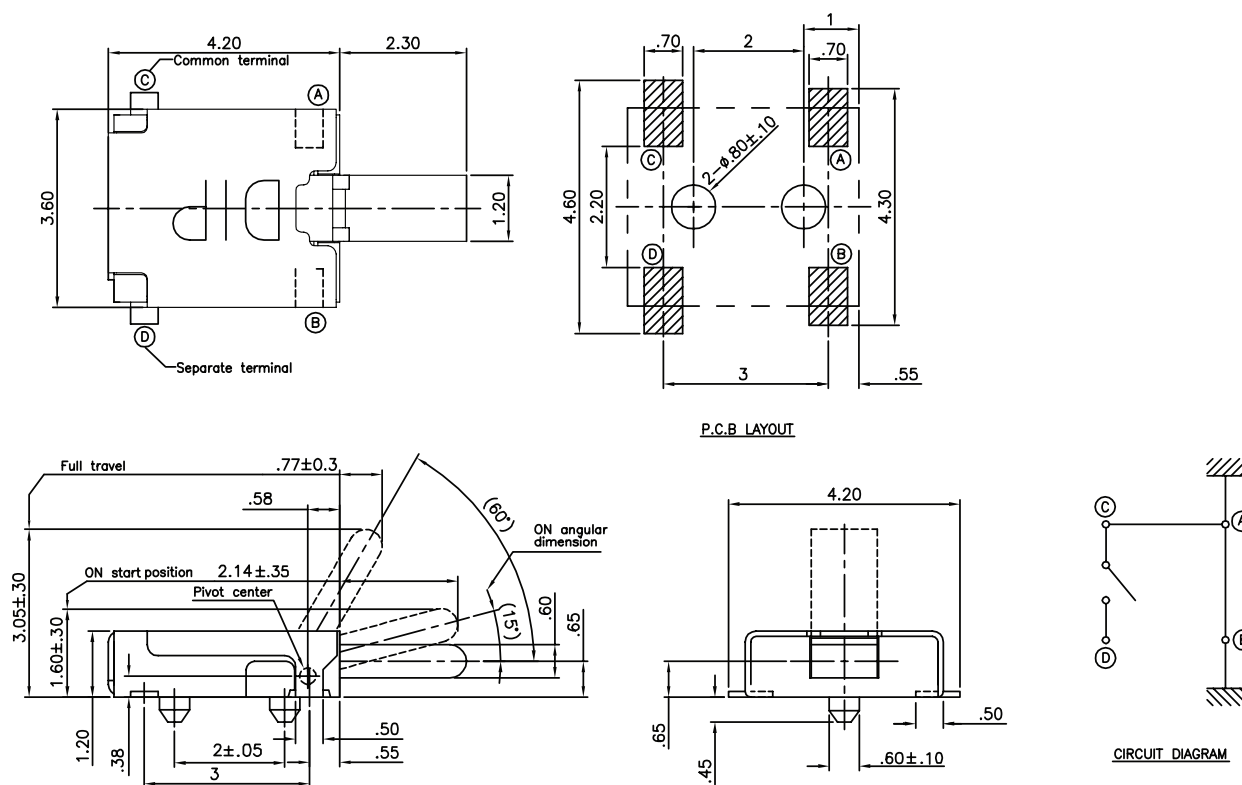


Dimensions: mm

**Electrical Specifications:**

- Rating: 50 μ A/3VDC to 10mA/5VDC
- Initial Contact Resistance: 500m Ω Max.
- Dielectric Strength: 100VAC 1 Minute.
- Insulation Resistance: 100M Ω Min. .

Mechanical Specifications:

- Operating Force: 40gf Max.
- Operating Temperature: -10°C to +60°C

Note:

- RoHS Compliant

Detector Switch
101-T1DFR-EV

Mountain
Switch