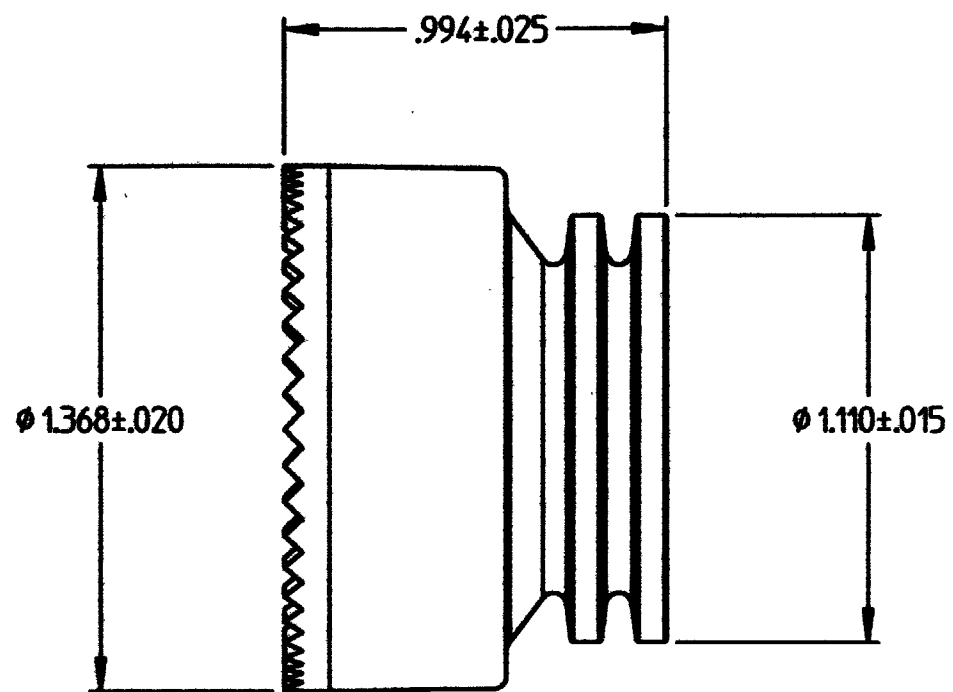
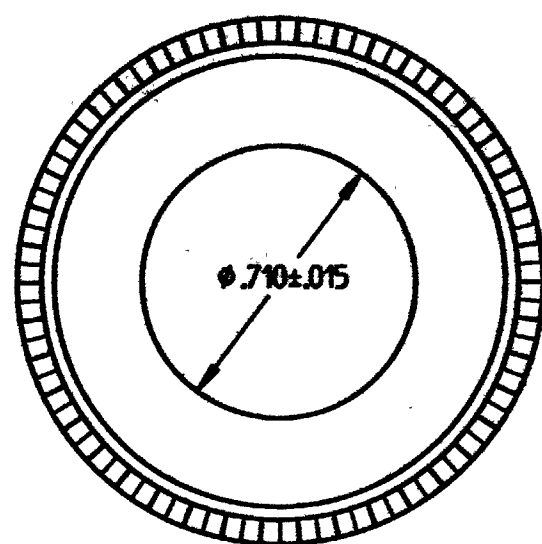


PROPERTY OF DEUTSCH E.C.D.
 This drawing contains proprietary information that shall not be disclosed, duplicated,
 nor used in whole or in part for any purpose other than to evaluate this drawing.

| REVISIONS | | | |
|-----------|------------------------|--------|----------|
| REV | DESCRIPTION | DATE | APPROVED |
| A | REVISED PER E.O. D1003 | 3/6/01 | Y.H. |



- ALLISON PART NUMBER WTA10-24-02/22 REF.
- FOLLOWER IS FOR 22 MM SPLIT CONVOLUTED TUBING.
- MATERIAL: HIGH GRADE PLASTIC (BLACK).
- ALL DIMENSIONS ARE IN INCHES UNLESS OTHERWISE SPECIFIED.

| | | | | |
|------------------|------------------|---|--|---------------|
| SIGNATURE & DATE | | FOLLOWER ALLISON WTA10-24-00/22 BACKSHELL SYSTEM SIZE 24 FOR 22 MM TUBING ENVELOPE | CP | FWL CODE |
| DR | R. GROSS 11-1-94 | | DEUTSCH | |
| CHK | JP 11-9-94 | | ENGINEERED CONNECTING DEVICES | |
| FE | R. Gross 11-1-94 | | 5733 W. Miller Ave. Hemet, California | |
| APPD | 197 | | A | 0818-202-2401 |
| SCALE | NONE | | | DATE |

0818-202-2401.dwg