

OGA DIAGONAL: 18.05 [458.50]  
 VA DIAGONAL: 17.34 [440.38]  
 PA DIAGONAL: 16.35 [415.30]

TOP LEVEL NUMBER	US NUMBER	TYPE	DIM "A" (TOTAL GLASS TO CONNECTOR)	A/G FINISH	PROD SPEC
17-8901-205	98-0003-2665-6	FFC	8.00" [203.20]	AG500	23655
17-8901-227	98-0003-2203-6	SER	8.00" [203.20]	AG500	23655
17-8901-206	98-0003-2666-4	NOV	SEE DWG	AG500	23655
17-8901-226	98-0003-3025-2	USB R	8.00" [203.20]	AG500	23655



ESD CLAMSHELL CASE IS USED WITH ALL NOV, USB AND SER TERMINATIONS.

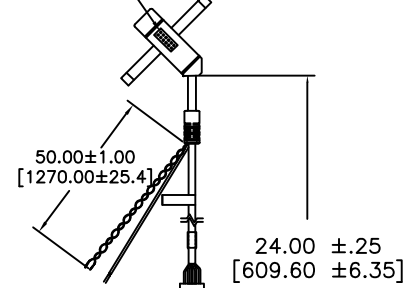
**(USB R)**

EXII-7760UC  
 98-0003-2814-0  
 USB CONTROLLER  
 SOLDER SIDE

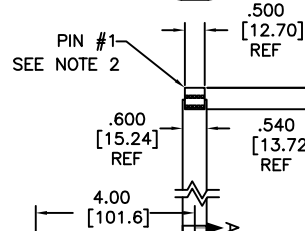
**(SER)**

EXII-7720SC  
 98-0003-2217-6  
 SERIAL CONTROLLER  
 SOLDER SIDE

PIN #1 (NOV)



**(FFC)**



PIN #1

PIN #1

PIN #1

.147 ± .020 [3.73 ± .51]  
 TOTAL THICKNESS OF GLASS, CABLE AND STRAIN RELIEF

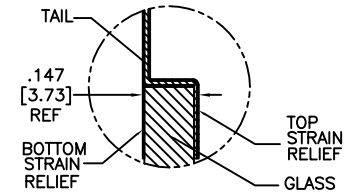
.370 ± .020 [9.40 ± .51]    .678 [17.22]

± .060 [1.52]

± .060 [1.52]

± .060 [1.52]

11.429 [290.30] OUTER GLASS AREA  
 10.889 [276.58] VIEWING AREA  
 10.273 [260.93] PRECISION AREA



SECTION A-A  
 SCALE: NONE

PINOUT	
1	LL
2	UL
3	SHLD
4	UR
5	LR

.125 [3.18] REF

.626 [15.90]    12.720 [323.09] PRECISION AREA  
 .240 ± .020 [6.10 ± .51]    13.492 [342.70] VIEWING AREA  
 13.972 [354.89] OUTER GLASS AREA

NOTES:

1. WEIGHT OF GLASS IN GRAMS: 785 ± 10%
2. NICOMATIC HOUSING P/N: OLO5  
 NICOMATIC RECEPTACLES (PINS) MATTE TIN PLATED P/N: 14106-12  
 HOUSING ORIENTED WITH LATCH DOWN

UNITS	INCHES [MM]
TOLERANCES UNLESS OTHERWISE SPECIFIED	
.X	±
.XX	± .03 [.76]
.XXX	± .015 [.38]
ANGLES	± 1°
THIRD ANGLE PROJECTION	
DO NOT SCALE DRAWING	
SCALE	1 = 1

**3M** 3M TOUCH SYSTEMS  
 METHUEN, MA  
 USA  
 © COPYRIGHT 2004  
 THIS DOCUMENT IS COPYRIGHTED PROPERTY OF THE 3M COMPANY AND MAY NOT BE REPRODUCED WITHOUT 3M WRITTEN PERMISSION OR USED OR DISCLOSED FOR OTHER THAN 3M AUTHORIZED PURPOSES.

H	REVISE PER CO 036256	4/13	SB
G	REVISE PER CO 033533	11/11	SB
F	REVISE PER CO 033064	6/11	SB
REV	CHANGE NOTICE	DATE	DRW

TITLE			
MARKETING DRAWING SCT32NN 17.34"			
DRAWN	A. OUELLETTE	12/05	SHEET 1 OF 1
SIZE	C	DOCUMENT NO.	29615-MKT
REV	H		