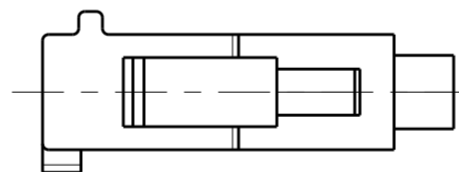
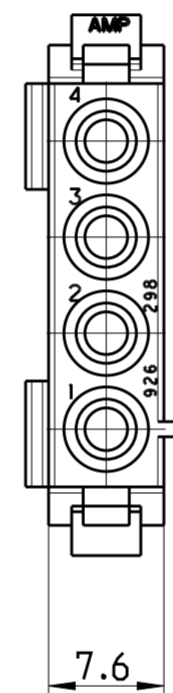
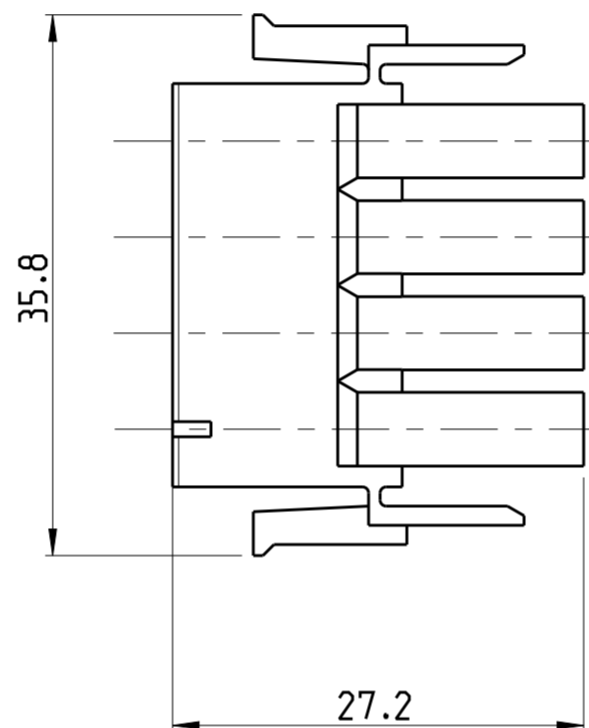
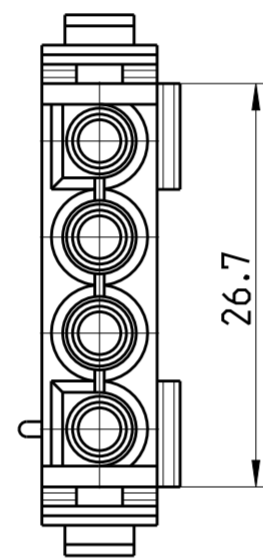


THIS DRAWING IS UNPUBLISHED. RELEASED FOR PUBLICATION 20  
 © COPYRIGHT 20 BY - ALL RIGHTS RESERVED.

LOC		DIST		REVISIONS			
P	LTR	DESCRIPTION	DATE	DWN	APVD		
F4		ECR-14-002737	24FEB2014	KKB	RRP		
F5		REVISED PER ECR-13-019169	04SEP2014	AV	DZ		

- 1 NEUES MATERIAL (PHOSPHOR UND HALOGEN FREI)
- 2 MATERIAL CORRESPONDING TO THE REQUIREMENT OF IEC60335-1 (INCL. GW T 750 °C WITHOUT FLAME)
- 3 COLOR OF HOUSINGS MAY RANGE FROM CLEAR TO GREEN OR YELLOW DUE TO HYGROSCOPIC NATURE OF RESIN.HOWEVER IT DOESN'T AFFECT THE FORM, FIT AND FUNCTION OF THE PRODUCT.



PART NUMBER	MATERIAL	
926298-7	PA66 UL94 V-0 NATURAL	2
926298-6	PA6.6 UL94 V2 NATURAL	2
926298-5	PA 6.6 UL94 V2 NATURAL	
926298-4	PA6.6 UL94 V-0 weiß	
926298-3	PA6.6 UL94 V-0 NATURAL	
926298-2	PA6.6 UL94 V-0 SCHWARZ	1
926298-1	PA66 UL94 V-2 NATURAL	3

THIS DRAWING IS A CONTROLLED DOCUMENT.		DWN KKB 10FEB2014	TE Connectivity	
DIMENSIONS: mm		CHK KKB 10FEB2014		
TOLERANCES UNLESS OTHERWISE SPECIFIED:		APVD RRP 10FEB2014	NAME UNIVERSAL MATE-N-LOK 4 WAY PLUG	
0 PLC ±		PRODUCT SPEC 108-1031	SIZE A2	
1 PLC ±0.2		APPLICATION SPEC 114-18011	CAGE CODE -	DRAWING NO G-926298
2 PLC ±		WEIGHT -	RESTRICTED TO -	
3 PLC ±		CUSTOMER DRAWING	SCALE 2:1	SHEET 1 OF 1
4 PLC ±				REV F5
ANGLES ±				
FINISH -				
MATERIAL REFER TABLE -				