

# MICRO SWITCH

FREEPORT ILLINOIS, U.S.A  
A DIVISION OF HONEYWELL  
FED. MFG. CODE 91929

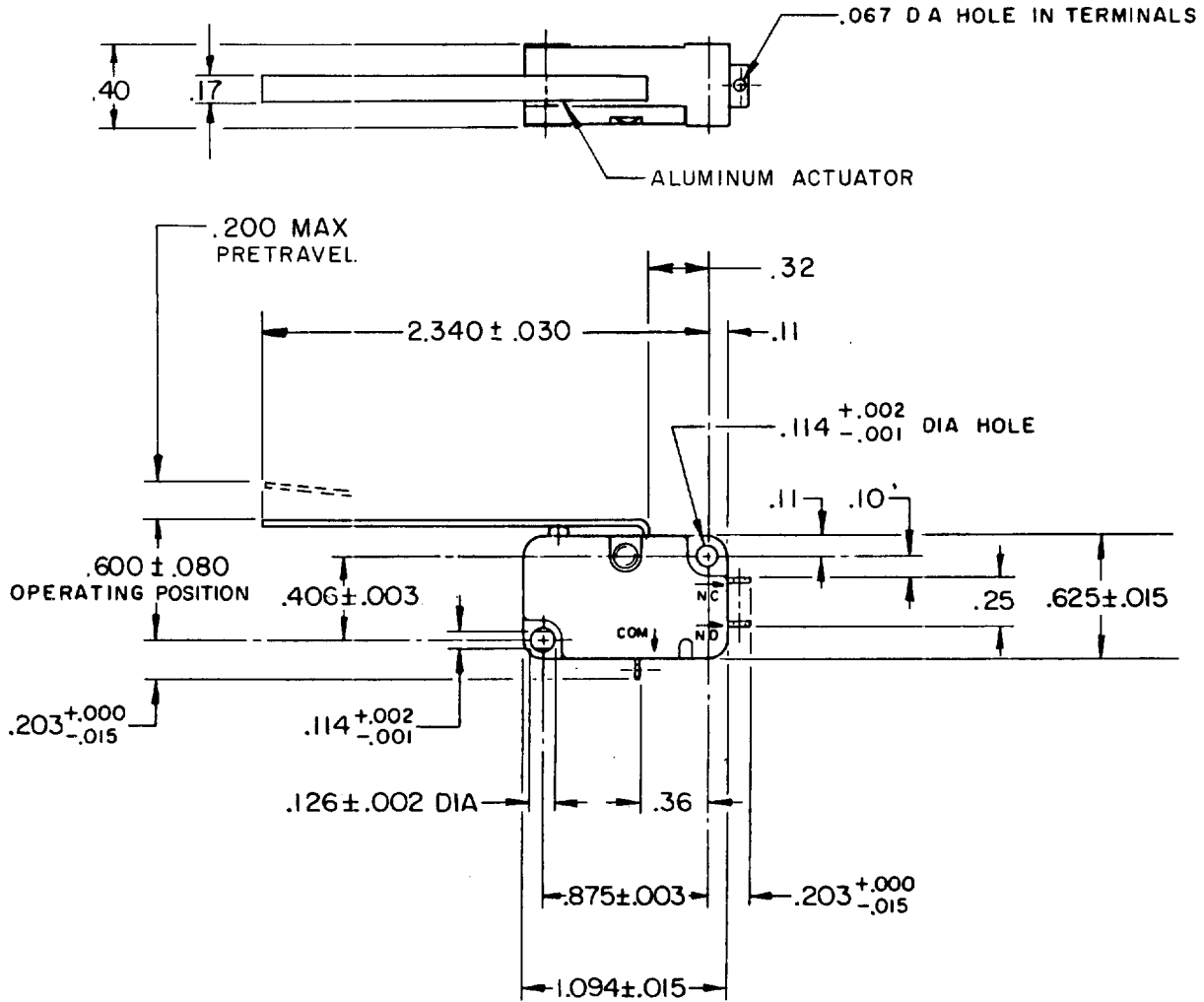
# SWITCH - BASIC

CATALOG LISTING  
**V3L-2436**

**CQ-XI552**

5

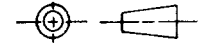
V3L-2436  
 M  
 DRAWING NUMBER  
 28  
 ISSUE  
 4  
 REVISIONS  
 A PR-7605  
 C E B  
 20 JAN 79  
 CO  
 5992  
 BMA  
 29 SEPT 89  
 C CO  
 76448  
 DCS  
 28 JAN 94  
 FO-52848-A  
 DRAWN  
 C J H 17 JAN 79  
 CHECK  
 C E B 20 JAN 79  
 CHECK  
 C E B 20 JAN 79  
 CHECK  
 RELEASE NO. PR-7605  
 REPLACES



NOTE -  
 - FORCE CHARACTERISTICS CHECKED WITH SWITCH LYING ON SIDE

THIS DRAWING COVERS A PROPRIETARY ITEM AND IS THE PROPERTY OF MICRO SWITCH, A DIVISION OF HONEYWELL. THIS DRAWING IS NOT TO BE COPIED OR USED WITHOUT THE APPROVAL OF MICRO SWITCH.

THIRD ANGLE PROJECTION



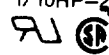
### CHARACTERISTICS

OPERATING FORCE --- 7 GRAMS MAX  
  
 RELEASE TRAVEL ----- .030 MIN  
 DIFFERENTIAL TRAVEL --- .055 MAX  
 OVERTRAVEL ----- .160 MIN

### ELECTRICAL DATA

CONTACT ARRANGEMENT  
 S P D T

L162 5A-125, 250, 277VAC  
 1/10HP-250VAC



SCALE FULL

DO NOT SCALE PRINT

APPLY TO DESIGN UNITS. CONVERSIONS ARE ONLY FOR REFERENCE. UNLESS NOTED, TOLERANCES ARE ±

DIM.	TOL.	DIM.	TOL.
mm	mm/in	in	mm/in
NO PLACES	X	1/.04	
ONE PLACE	X,X	0.4/.016	X X 0.8/.03
TWO PLACES	X,XX	0.15/.006	X XX 0.38/.015
THREE PLACES	X,XXX		X XXX 0.13/.005

DESIGN UNITS  SI METRIC  US CUSTOMARY

WEIGHT