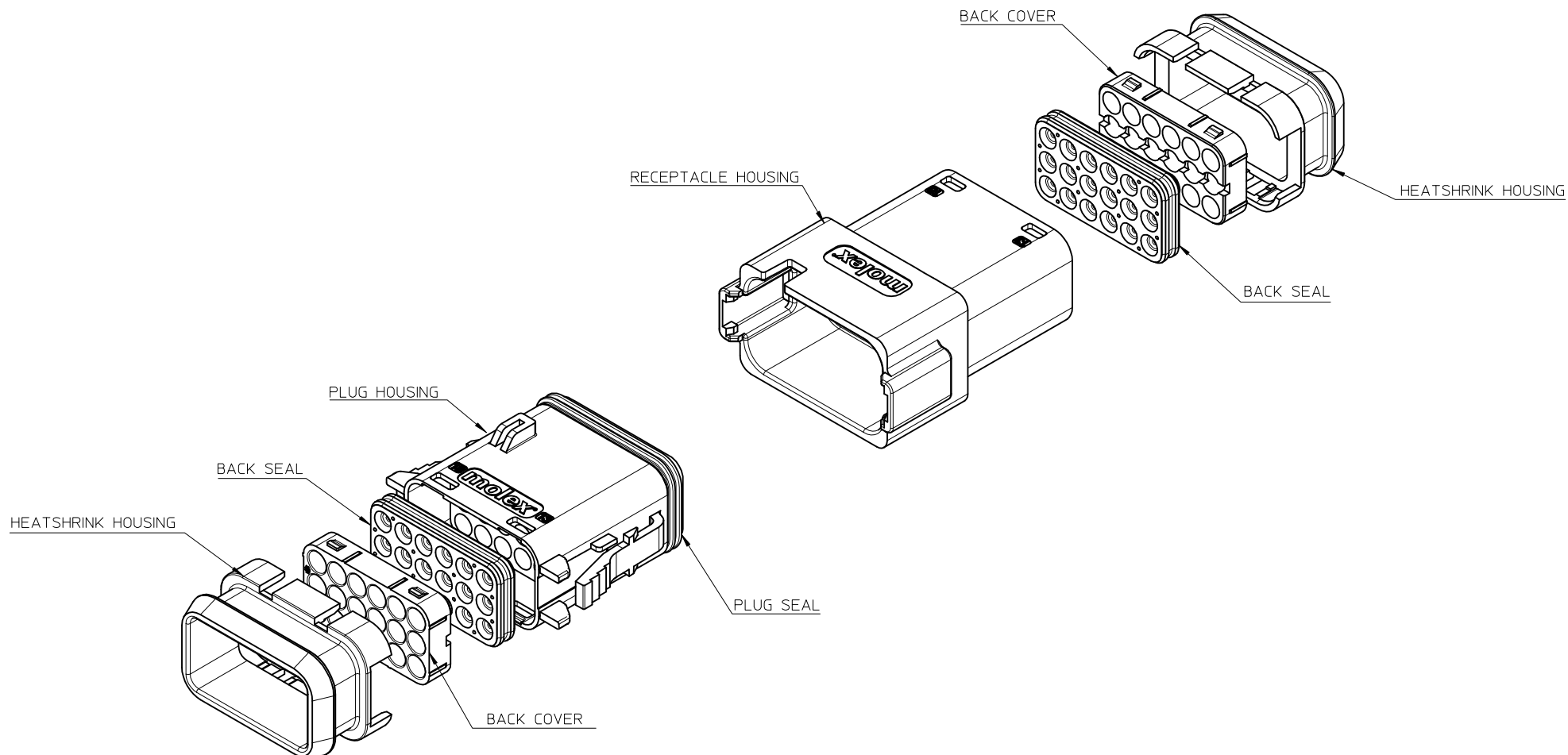


EM-93444-0070



NOTES

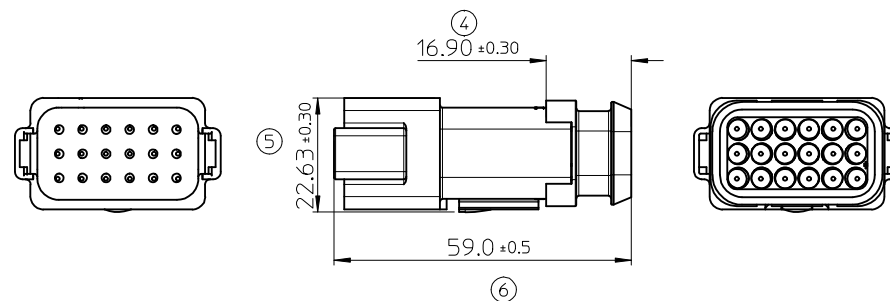
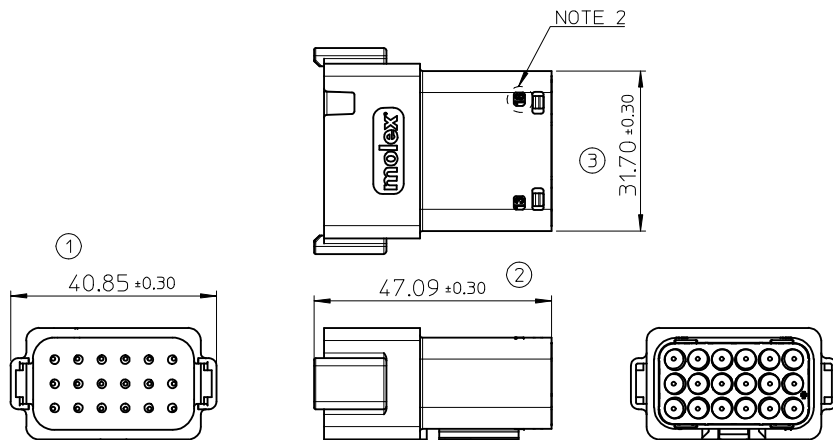
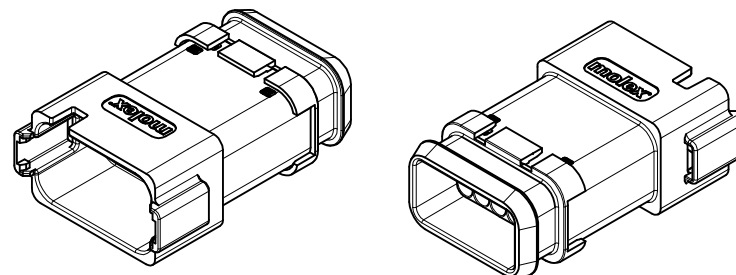
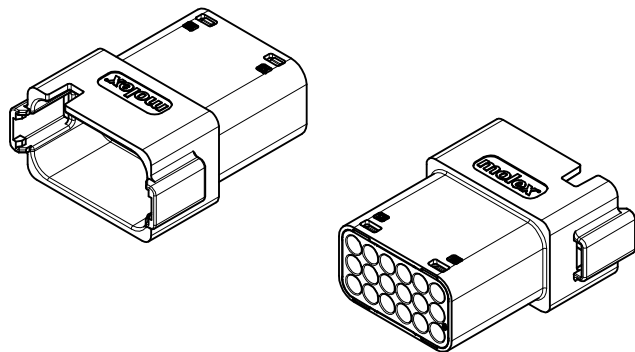
1. SEE SHEET 2 TO 7 FOR UNSPECIFIED NOTES, DIMENSIONS AND PART NUMBERS

PROPOSED EC NO: IPG2015-0542 DRWN:NDOWDS CHKD: APPR:JWALLACE 2014/11/06 2015/04/03	DESCRIPTION REV	QUALITY SYMBOLS <div>▽=0</div> <div>▽=0</div>	GENERAL TOLERANCES (UNLESS SPECIFIED)			DIMENSION STYLE MM ONLY		SCALE 1.5:1	DESIGN UNITS METRIC	THIRD ANGLE PROJECTION		
						DRAWN BY JFLETCHER		DATE 2014/04/23		TITLE 18CCT ML-XT CV CONNECTOR		
						CHECKED BY		DATE				
						APPROVED BY		DATE		<div>molex</div> <div>SD-93443-007</div> <div>SHEET NO. 1 OF 7</div>		
						MATERIAL NO.		DOCUMENT NO.				
						SEE NOTES						
						SIZE A3		THIS DRAWING CONTAINS INFORMATION THAT IS PROPRIETARY TO MOLEX INCORPORATED AND SHOULD NOT BE USED WITHOUT WRITTEN PERMISSION				

10 9 8 7 6 5 4 3 2 1

18CCT RECEPTACLE CONNECTOR

18CCT RECEPTACLE CONNECTOR WITH
HEATSHRINK HOUSING ULTRASONICALLY
WELDED IN PLACE



NOTES

1. MATERIAL

HOUSING: NYLON 30% GF

BACK SEAL: HIGH CONSISTENCY RUBBER

2. CIRCUIT IDENTIFICATION

3. CABLE JACKET RANGE Ø1.4MM TO 3.05MM

4. SEE SHEET 3 FOR FINAL PART NUMBER DESIGNATION

5. SEE PS-93443-001 FOR PRODUCT SPECIFICATION

6. SEE PK-93443-001 FOR PACKAGING SPECIFICATION

INSPECTION NUMBERS 1-50 RESERVED FOR SHEET 2

LAST INSPECTION NUMBER: 6

SEE SHEET 1	EC NO:	2014/11/06	DESCRIPTION
	DRWN:NDOWDS	2015/04/03	
	CHKD:		
	APPR:JWALLACE		
	REV		

QUALITY SYMBOLS
=0
=0

GENERAL TOLERANCES (UNLESS SPECIFIED)		
	mm	INCH
4 PLACES	± ---	± ---
3 PLACES	± ---	± ---
2 PLACES	± 0.10	± ---
1 PLACE	± 0.20	± ---
0 PLACE	± ---	± ---
ANGULAR ± 2 °		
DRAFT WHERE APPLICABLE MUST REMAIN WITHIN DIMENSIONS		

DIMENSION STYLE	
MM ONLY	
DRAWN BY	DATE
JFLETCHER	2014/04/23
CHECKED BY	DATE
APPROVED BY	DATE
MATERIAL NO.	
SEE NOTES	
SIZE	A3

SCALE	1:1
DESIGN UNITS	METRIC
THIRD ANGLE PROJECTION	
TITLE	
18CCT ML-XT CV CONNECTOR	
DOCUMENT NO.	
SD-93443-007	
SHEET NO.	
2 OF 7	

molex

10 9 8 7 6 5 4 3 2 1

F

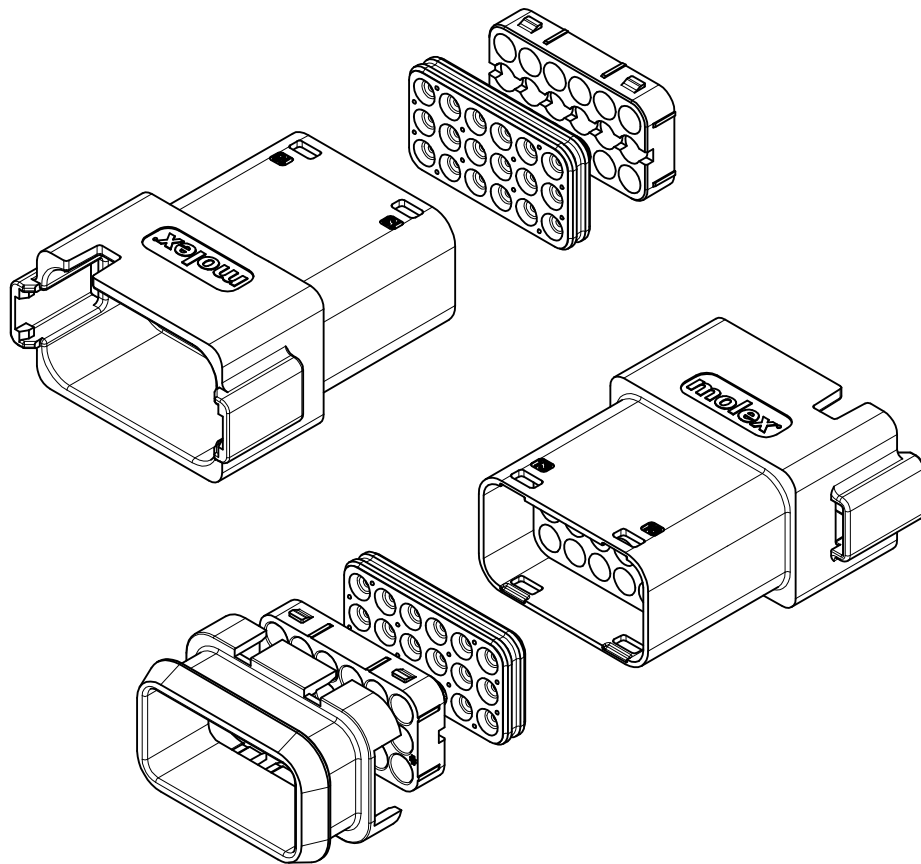
E

D

C

B

A



18CCT RECEPTACLE CONNECTOR

SERIES NO.

93444

7

CIRCUIT SIZE
7 = 18cct

ASSEMBLY OPTIONS

- 1 = RECEP ASSEMBLY FOR WIRE JACKET RANGE: ϕ 1.4mm-3.05mm
5 = RECEP ASSEMBLY & HEATSHRINK FOR WIRE JACKET RANGE: ϕ 1.4mm-3.05mm

KEYING OPTION

- 1 = KEYING OPTION A
2 = KEYING OPTION B
3 = KEYING OPTION C
4 = KEYING OPTION D
5 = KEYING OPTION E

COLOUR
1 = BLACK

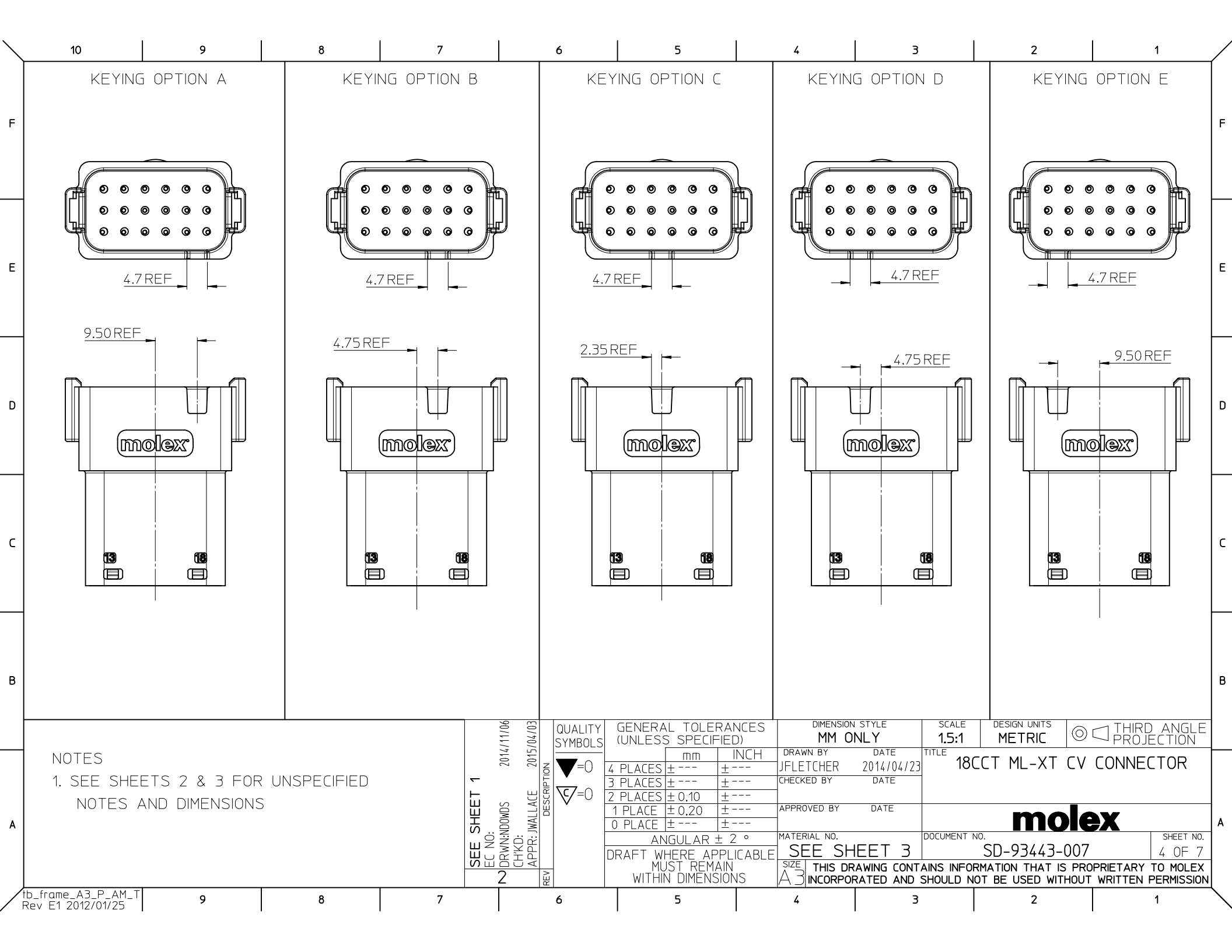
EXAMPLE:

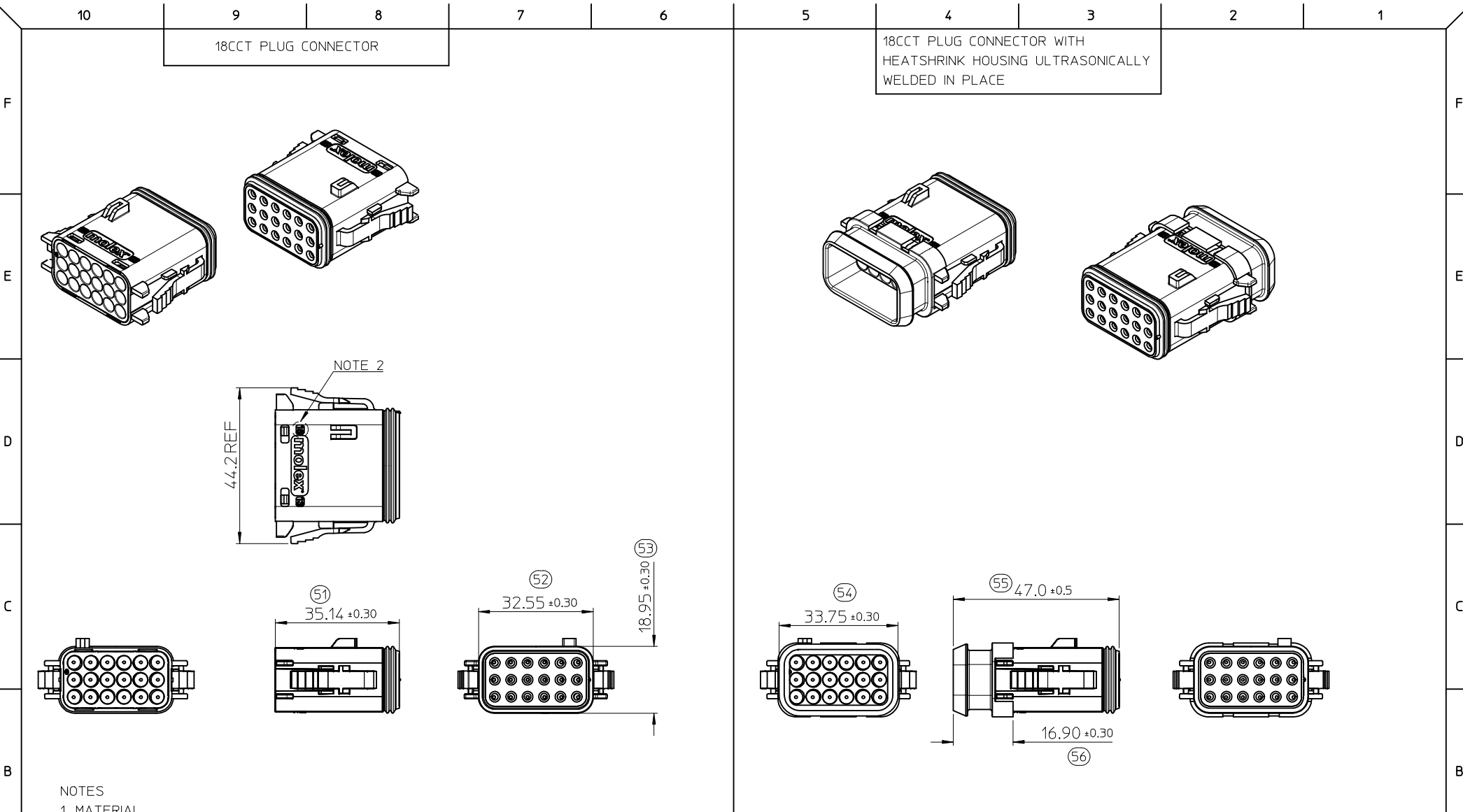
18cct RECEP BLACK & HEATSHRINK FOR WIRE JACKET RANGE: ϕ 1.4mm-3.05mm, KEYING OPTION A: 93444-7511

NOTES

- SEE SHEET 2 FOR UNSPECIFIED NOTES AND DIMENSIONS
- BACK SEAL COLOUR: BURNT ORANGE
- PLEASE CONTACT MOLEX REGARDING HEATSHRINK HOUSINGS

SEE SHEET 1	EC NO: 2014/11/06 DRWN:NDWDS CHKD: APPR:JWALLACE	2015/04/03	DESCRIPTION	QUALITY SYMBOLS <div>▽=0</div> <div>▽=0</div>	GENERAL TOLERANCES (UNLESS SPECIFIED)			DIMENSION STYLE MM ONLY		SCALE 1.5:1	DESIGN UNITS METRIC	THIRD ANGLE PROJECTION		TITLE 18CCT ML-XT CV CONNECTOR	
						mm	INCH	DRAWN BY JFLETCHER	DATE 2014/04/23						
					4 PLACES	± ---	± ---	CHECKED BY	DATE						
					3 PLACES	± ---	± ---								
					2 PLACES	± 0.10	± ---								
					1 PLACE	± 0.20	± ---								
					0 PLACE	± ---	± ---								
					ANGULAR ± 2 °			MATERIAL NO.		DOCUMENT NO.					SHEET NO.
					DRAFT WHERE APPLICABLE MUST REMAIN WITHIN DIMENSIONS			SEE NOTES		SD-93443-007					3 OF 7
								SIZE A3	THIS DRAWING CONTAINS INFORMATION THAT IS PROPRIETARY TO MOLEX INCORPORATED AND SHOULD NOT BE USED WITHOUT WRITTEN PERMISSION						





NOTES

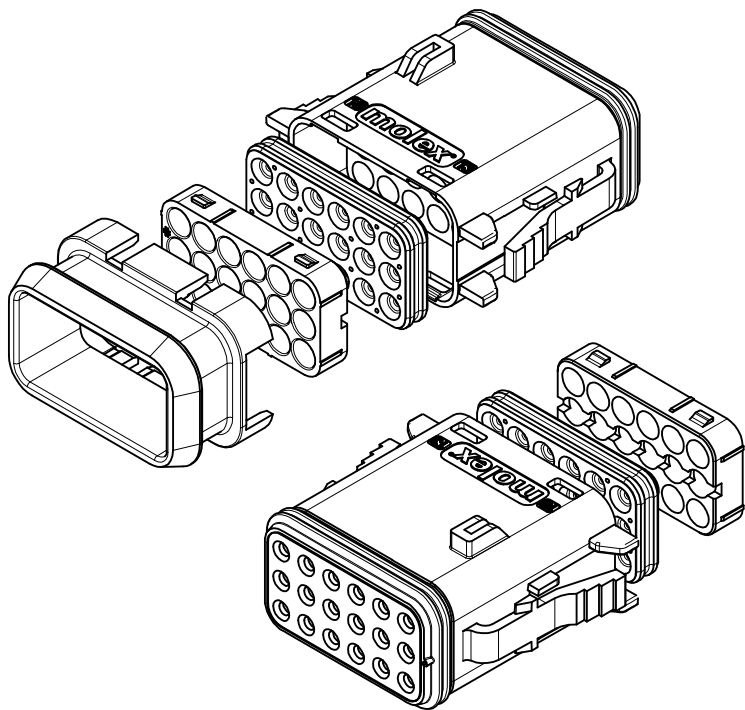
1. MATERIAL
HOUSING: NYLON 30% GF
PLUG SEAL: SILICONE
BACK SEAL: HIGH CONSISTENCY RUBBER

2. CIRCUIT IDENTIFICATION

3. CABLE JACKET RANGE Ø1.4MM TO 3.05MM

4. SEE SHEET 6 FOR FINAL PART NUMBER DESIGNATION
INSPECTION NUMBERS 51-100 RESERVED FOR SHEET 5
LAST INSPECTION NUMBER: 56

SEE SHEET 1	EC NO:	2014/11/06	QUALITY SYMBOLS ▽=0 ◻=0	GENERAL TOLERANCES (UNLESS SPECIFIED)		DIMENSION STYLE MM ONLY		SCALE 1:1	DESIGN UNITS METRIC	THIRD ANGLE PROJECTION		
	DRWN:NDOWDS	2015/04/03				DRAWN BY JFLETCHER	DATE 2014/04/23	TITLE 18CCT ML-XT CV CONNECTOR				
	CHKD:					CHECKED BY		DATE				
	APPR:JWALLACE					APPROVED BY		DATE				
DRAFT WHERE APPLICABLE MUST REMAIN WITHIN DIMENSIONS				MATERIAL NO.		DOCUMENT NO.		SD-93443-007		SHEET NO. 5 OF 7		
SIZE A3		THIS DRAWING CONTAINS INFORMATION THAT IS PROPRIETARY TO MOLEX INCORPORATED AND SHOULD NOT BE USED WITHOUT WRITTEN PERMISSION										



18CCT PLUG CONNECTOR

93445

7

-

-

-

SERIES NO.

CIRCUIT SIZE
7 = 18cct

ASSEMBLY OPTIONS

- 1 = PLUG ASSEMBLY FOR WIRE JACKET RANGE: ϕ 1.4mm-3.05mm
5 = PLUG ASSEMBLY & HEATSHRINK FOR WIRE JACKET RANGE: ϕ 1.4mm-3.05mm

KEYING OPTION

- 1 = KEYING OPTION A
2 = KEYING OPTION B
3 = KEYING OPTION C
4 = KEYING OPTION D
5 = KEYING OPTION E

COLOUR

- 1 = BLACK

EXAMPLE:

18cct PLUG BLACK & HEATSHRINK FOR WIRE JACKET RANGE: ϕ 1.4mm-3.05mm, KEYING OPTION A: 93445-7511

NOTES

- SEE SHEET 5 FOR UNSPECIFIED NOTES AND DIMENSIONS
- BACK SEAL COLOUR: BURNT ORANGE
- PLEASE CONTACT MOLEX REGARDING HEATSHRINK HOUSINGS

SEE SHEET 1	EC NO: 2014/11/06 DRWN:NDOWDS CHKD: APPR:JWALLACE 2015/04/03	DESCRIPTION	QUALITY SYMBOLS ▽=0 ▽=0	GENERAL TOLERANCES (UNLESS SPECIFIED)			DIMENSION STYLE MM ONLY		SCALE 1.5:1	DESIGN UNITS METRIC	THIRD ANGLE PROJECTION			
					mm	INCH	DRAWN BY JFLETCHER	DATE 2014/04/23	TITLE 18CCT ML-XT CV CONNECTOR					
				4 PLACES	± ---	± ---	CHECKED BY	DATE						
				3 PLACES	± ---	± ---	APPROVED BY		DATE	<div>molex</div>				
				2 PLACES	± 0.10	± ---								
				1 PLACE	± 0.20	± ---								
				0 PLACE	± ---	± ---	MATERIAL NO.		DOCUMENT NO.					
DRAFT WHERE APPLICABLE			SEE NOTES			SD-93443-007		6 OF 7						
MUST REMAIN WITHIN DIMENSIONS			THIS DRAWING CONTAINS INFORMATION THAT IS PROPRIETARY TO MOLEX INCORPORATED AND SHOULD NOT BE USED WITHOUT WRITTEN PERMISSION											

