

PLEASE CHECK WWW.MOLEX.COM FOR LATEST PART INFORMATION

Part Number: [0878326022](#)

Status: **Active**

Overview: [Milli-Grid™ Connector System](#)

Description: Milli-Grid™ Header, Surface Mount, Vertical, Shrouded, Lead-Free, 22 Circuits, 0.38µm Gold (Au) Plating, with Pick-and-Place Cap, with Side and Center Locking Windows, with Center Polarization Slot, with PCB Locator, Embossed

Documents:

[3D Model](#)

[Product Specification PS-87831-027 \(PDF\)](#)

[Drawing \(PDF\)](#)

[RoHS Certificate of Compliance \(PDF\)](#)

Agency Certification

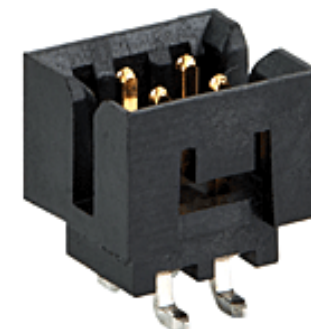
CSA LR19980
UL E29179

General

Product Family PCB Headers
Series [87832](#)
Application Signal, Wire-to-Board
Comments With Cap|Contact Molex for application in automotive industry
Overview [Milli-Grid™ Connector System](#)
Product Name Milli-Grid™
UPC 822348273324

Physical

Breakaway No
Circuits (Loaded) 22
Circuits (maximum) 22
Color - Resin Black
Durability (mating cycles max) 100
First Mate / Last Break No
Flammability 94V-0
Glow-Wire Compliant No
Guide to Mating Part No
Keying to Mating Part Yes
Lock to Mating Part Yes
Material - Metal Phosphor Bronze
Material - Plating Mating Gold
Material - Plating Termination Tin
Material - Resin Nylon
Net Weight 0.960/g
Number of Rows 2
Orientation Vertical
PCB Locator No
PCB Retention None
Packaging Type Embossed Tape on Reel
Pitch - Mating Interface 2.00mm
Pitch - Termination Interface 2.00mm
Plating min - Mating 0.381µm
Plating min - Termination 1.905µm
Polarized to PCB No
Shrouded Fully
Stackable No
Surface Mount Compatible (SMC) Yes
Temperature Range - Operating -55°C to +105°C
Termination Interface: Style Surface Mount



Series image - Reference only

EU ELV

Not Relevant

EU RoHS

Compliant

REACH SVHC

Contains SVHC(2014 December 17): No

Halogen-Free

Status

Not Low-Halogen

Need more information on product environmental compliance?

Email productcompliance@molex.com
Please visit the [Contact Us](#) section for any non-product compliance questions.

China ROHS

ELV

Green Image

Not Relevant

Search Parts in this Series

[87832](#) Series

Mates With

Milli-Grid™ Vertical Through Hole Receptacle [79107](#) , [78787](#) , Milli-Grid™ Flex-to-Board Vertical Receptacle [79108](#) , Milli-Grid™ Vertical Surface Mount Receptacle [79109](#) , [78788](#) , Milli-Grid™ Crimp Housing [51110](#) , Milli-Grid™ Cable-to-Board Receptacle [87568](#)

Electrical

Current - Maximum per Contact	2.0A
Voltage - Maximum	125V

Solder Process Data

Duration at Max. Process Temperature (seconds)	010
Lead-freeProcess Capability	REFLOW
Max. Cycles at Max. Process Temperature	001
Process Temperature max. C	260

Material Info**Reference - Drawing Numbers**

Product Specification	PS-87831-027
Sales Drawing	SD-87832-006

This document was generated on 06/24/2015

PLEASE CHECK WWW.MOLEX.COM FOR LATEST PART INFORMATION