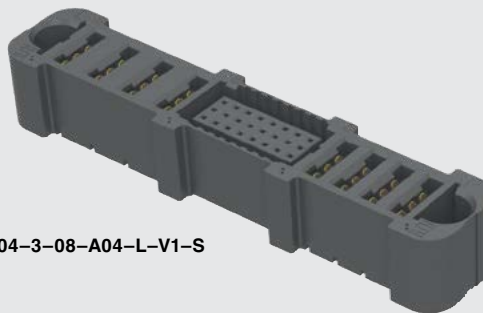




POWER™ EXTreme
STRIP Ten60

ET60S-D04-3-08-A04-L-V1-S



EXTreme Ten60Power™ SOCKET

Mates with:
ET60T

SPECIFICATIONS

For complete specifications and recommended PCB layouts see www.samtec.com?ET60S

Insulator Material:
Black LCP

Terminal Material:
Signal: Copper Alloy
Power: Copper Alloy

Plating:

Au or Sn over
50 μm (1.27 μm) Ni

Current Rating:

Power: 60 A per blade
(2 pins powered)

Signal: 2.8 A per pin
(6 pins powered)

Operating Temp Range:

-40 °C to +105 °C

Voltage Rating:

280 VAC

RoHS Compliant:

Yes

PROCESSING

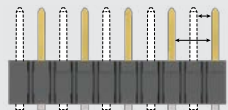
Lead-Free Solderable:
Yes

RECOGNITIONS

For complete scope of recognitions see www.samtec.com/quality



CREEPAGE AND CLEARANCE



Selectively loading contacts achieves customer specific creepage and clearance requirements.
Contact asp@samtec.com

Notes:

Some lengths, styles and options are non-standard, non-returnable.

EXTreme Ten60Power™ is a trademark of Molex Incorporated and is dual sourced by Molex®

ET60S

POWER
OPTION (RIGHT)

ROWS

SIGNAL POSITIONS
PER ROW

-AXX

= AC Power Positions
(-02, -03, -04, -05, -06 positions only)

-DXX

= DC Power Positions
(-02, -03, -04, -05, -06, -07, -08, -09, -10 positions only)

-SXX*

= Split Power

-000

= No Power

-0
= No Signal

-3
= 3 Rows

-5
= 5 Rows

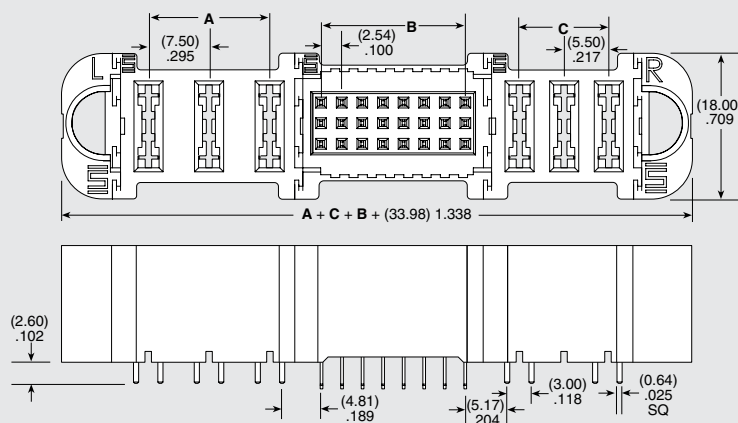
-00
= No Signal

-08
= 3 Row only

-01, -02, -03, -04,
-05, -06, -07, -08
= 5 Row only

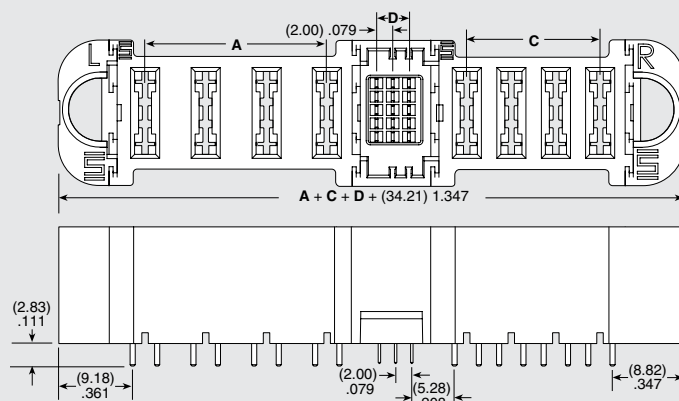
Note:

-SXX* & -T* are Preliminary



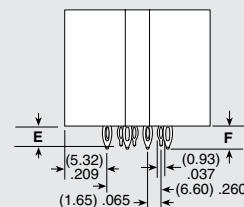
ET60S-D03-3-08-A03-X-V1-S

POWER POSITIONS (LEFT)	POWER POSITIONS (RIGHT)	A AC POWER	C DC POWER
-02	-02	(7.50) .295	(5.50) .217
-03	-03	(15.00) .591	(11.00) .433
-04	-04	(22.50) .886	(16.50) .650
-05	-05	(30.00) 1.181	(22.50) .886
-06	-06	(37.50) 1.476	(27.50) 1.083
-07	-07	N/A	(33.00) 1.299
-08	-08	N/A	(38.50) 1.516
-09	-09	N/A	(44.00) 1.732
-10	-10	N/A	(49.50) 1.949



ET60S-D04-5-03-A04-X-VP-S

TAIL	3 ROWS		5 ROWS	
	E	F	E	F
-VP	(3.28) .129	(2.83) .111	(2.83) .111	(2.50) .098
-V1		(2.60) .102	N/A	



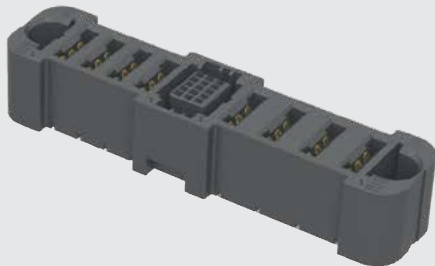
Due to technical progress, all designs, specifications and components are subject to change without notice.

WWW.SAMTEC.COM

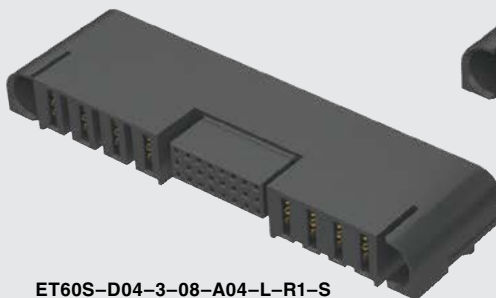
All parts within this catalog are built to Samtec's specifications.

Customer specific requirements must be approved by Samtec and identified in a Samtec customer-specific drawing to apply.

ET60S-A04-5-03-D04-L-VP-S



ET60S-D04-3-08-A04-L-R1-S



ET60S-D04-5-03-A04-S-R1-S



ET60S SERIES

POWER OPTION (LEFT)

-AXX

= AC Power Positions
(-02, -03, -04, -05, -06 positions only)

-DXX

= DC Power Positions
(-02, -03, -04, -05, -06, -07, -08, -09, -10 positions only)

-SXX*

= Split Power

-000

= No Power

Note:
-SXX* & -T* are Preliminary

PLATING

-L

= 10 μ " (0.25 μ m) Gold on contact,
Matte Tin on tail
(Not available for 5 rows)

-S

= 30 μ " (0.76 μ m) Gold on contact,
Matte Tin on tail

TAIL

-VP

= Vertical Press-fit

-V1

= Vertical through-hole
(Use with (1.60 mm) .062" thick card)
(-0 and -3 Row only)

-R1

= Right-angle through-hole
(Use with (1.60 mm) .062" thick card)

GUIDE POST

(Required callout)

-S

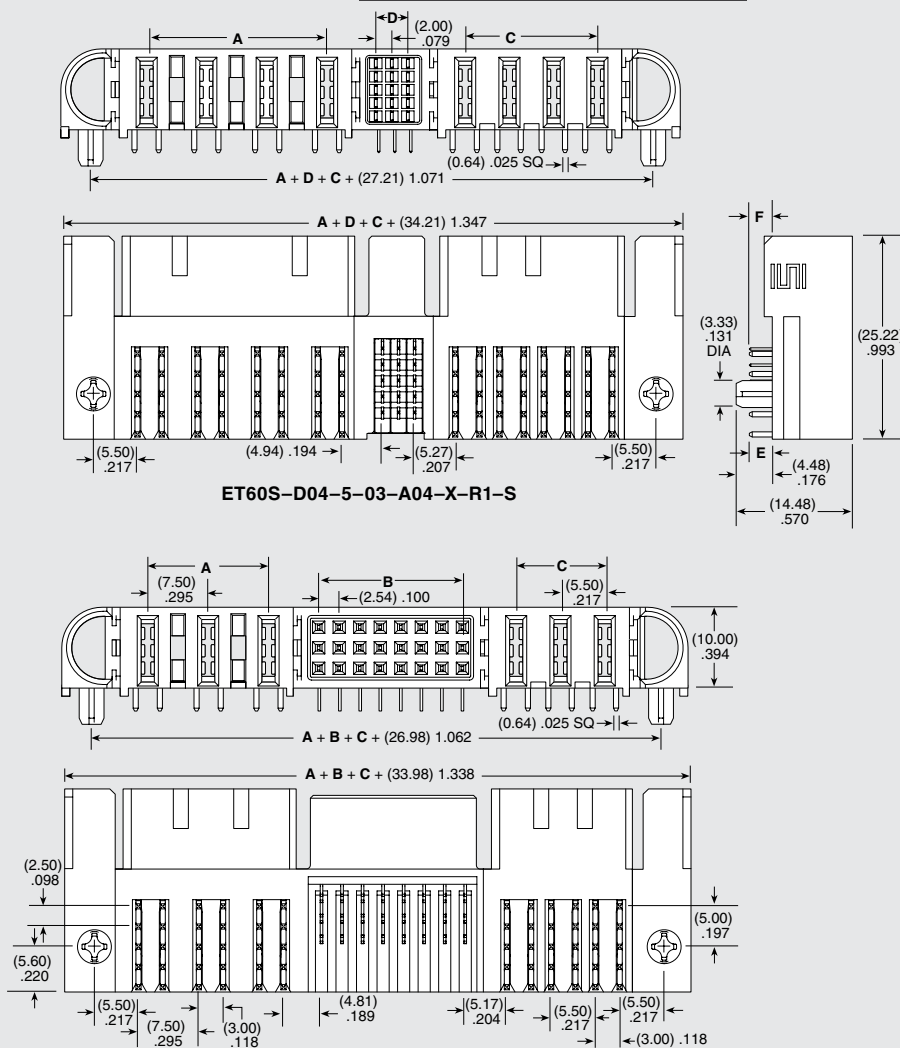
= Side
Guide Post

-T*

= Top
Guide Post

SIGNAL POSITIONS PER ROW (3 Row)	B	SIGNAL POSITIONS PER ROW (5 Row)	D
-08	(17.78) .700	-01	N/A
		-02	(2.00) .079
		-03	(4.00) .157
		-04	(6.00) .236
		-05	(8.00) .315
		-06	(10.00) .394
		-07	(12.00) .472
		-08	(14.00) .551

TAIL	E	F
-R1	(2.84) .112	



Due to technical progress, all designs, specifications and components are subject to change without notice.

WWW.SAMTEC.COM

All parts within this catalog are built to Samtec's specifications.
Customer specific requirements must be approved by Samtec and identified in a Samtec customer-specific drawing to apply.