

LS5 LENSES FOR SAMSUNG SUNNIX5 LEDs



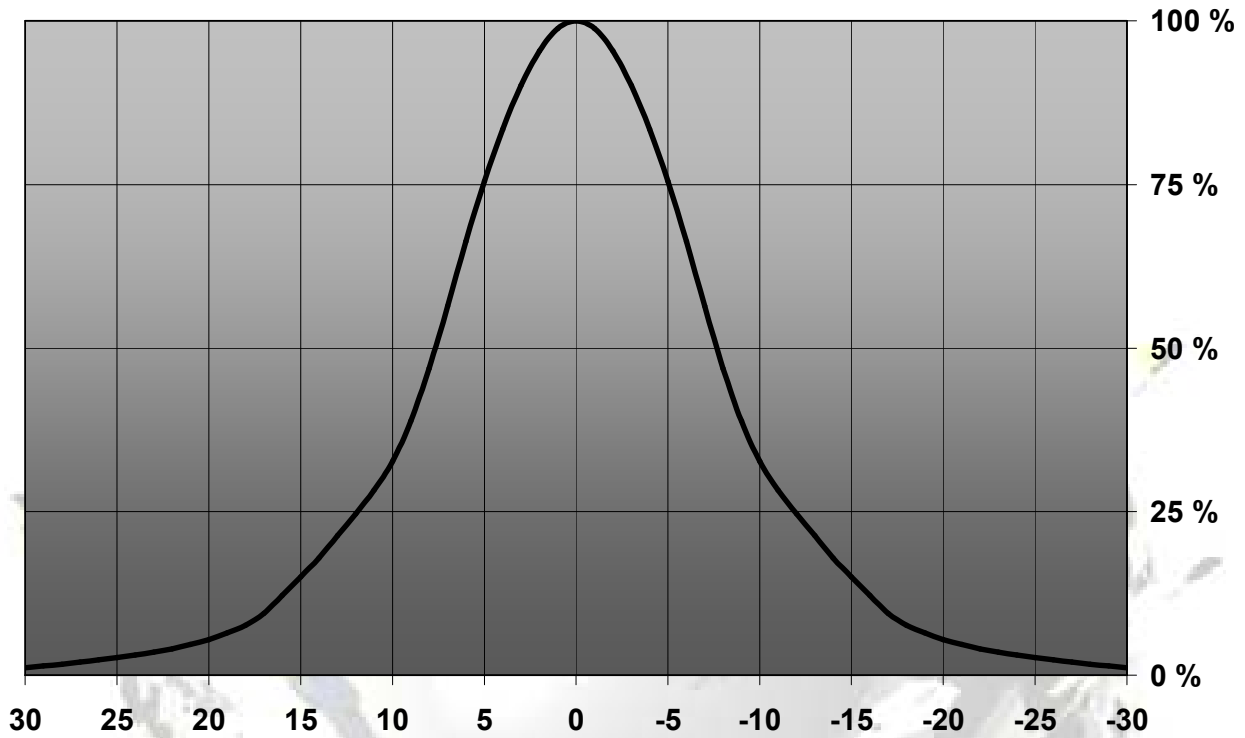
- Specially designed for Samsung Sunnix5 series of LEDs.
- Special care taken to make a uniform white or warm white illumination.
- Lens material optical grade PMMA with high UV and temperature resistance (105°C/220°F). Allows use of high current and temperature conditions
- Best available optical efficiency, more than 90%, with an extremely good cutoff of light
- Fastening of holder to PCB with appropriate adhesive, e.c. epoxy or polyurethane based. NOTE: DO NOT USE SUPERGLUE.
- Please check fastening details from this link:
(http://www.ledil.com/datasheets/DataSheet_GLUES.pdf)
- (http://www.ledil.com/datasheets/DataSheet_TAPE.pdf)
- We advise customer to ensure the suitability and sufficiency of the bond in the end product. For example, mechanical stress, vibration and holes on the surface of the circuit board weaken the strength of the tape.

LENS TYPES

NAME	ORDERING CODE	FWHM Angle
LS5 REAL SPOT	FA11060_LS5-RS	±8°
LS5 DIFFUSER	FA11061_LS5-D	±10°
LS5 MEDIUM	FA11062_LS5-M	±14°
LS5 OVALE	FA11063_LS5-O-90	±9°x±20°
LS5 RECTANGULAR	FA11064_LS5-REC	±13°x±19°

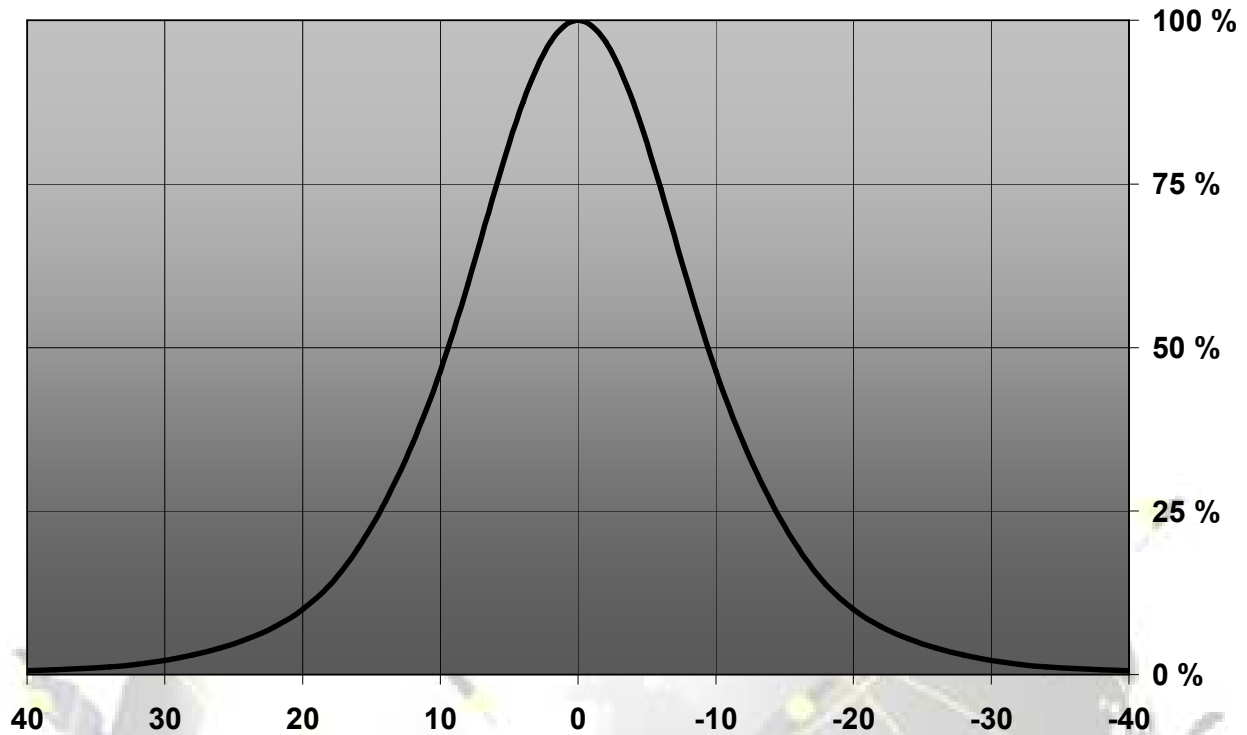
MEASUREMENT DATA

Relative Intensity of FA11060_LS5-RS



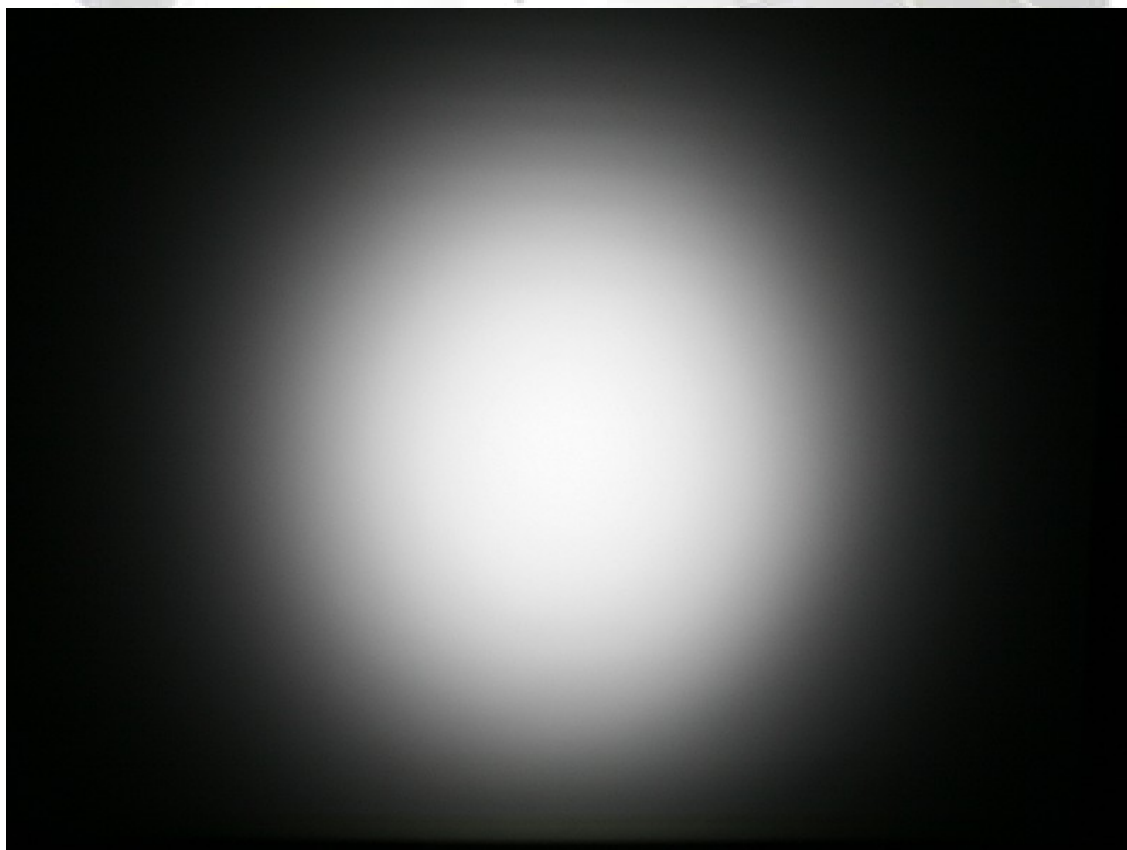
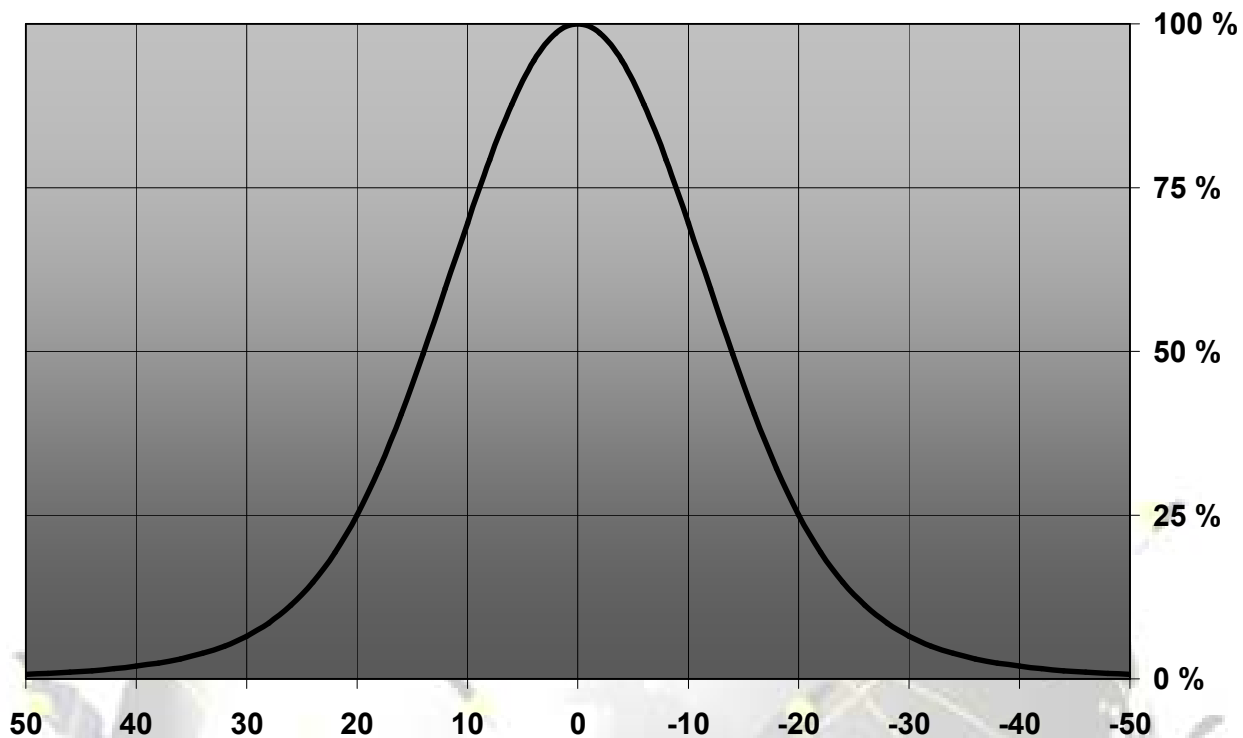
© Ledil Oy – PRELIMINARY - Subject to change without prior notice

Relative Intensity of FA11061_LS5-D



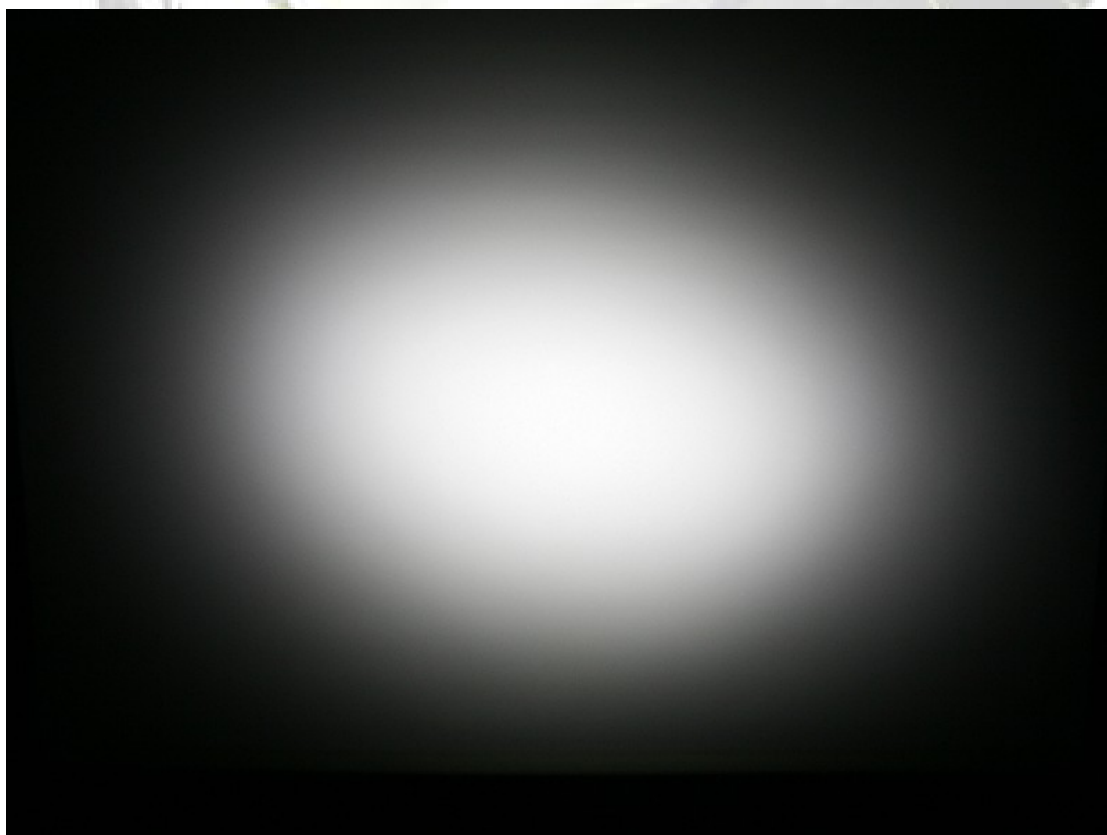
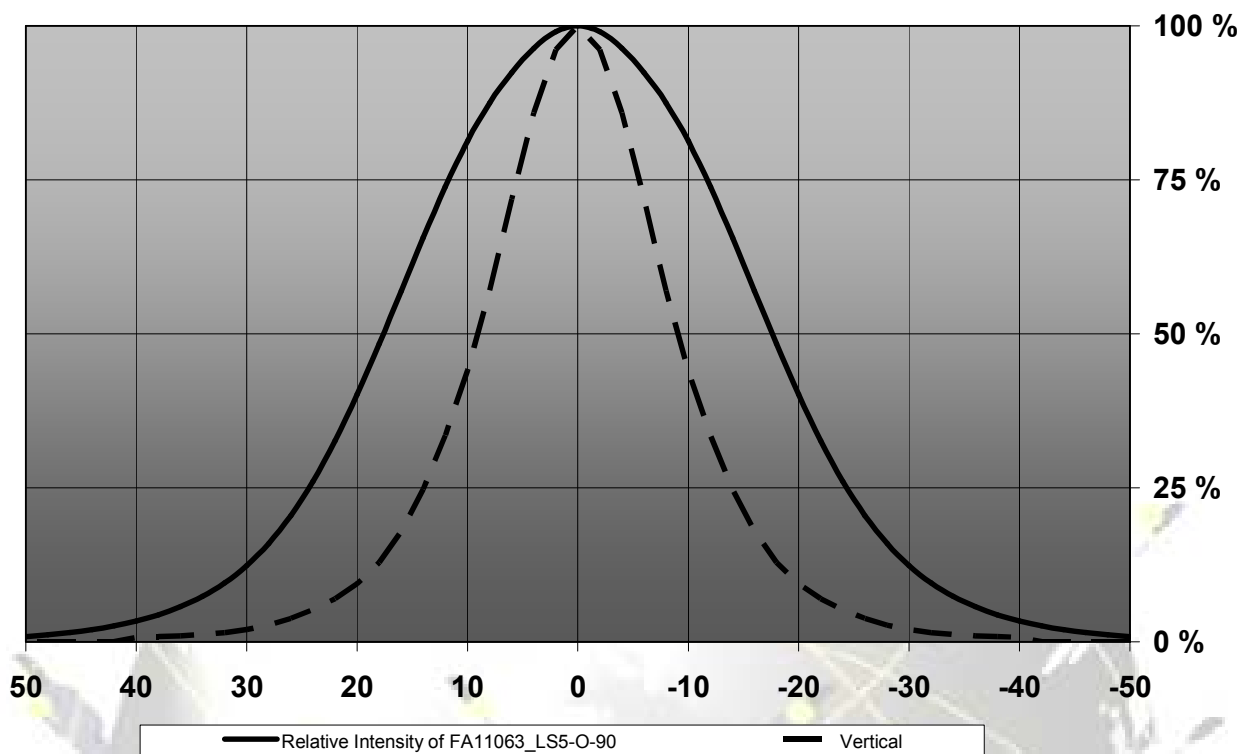
© Ledil Oy – PRELIMINARY - Subject to change without prior notice

Relative Intensity of FA11062_LS5-M



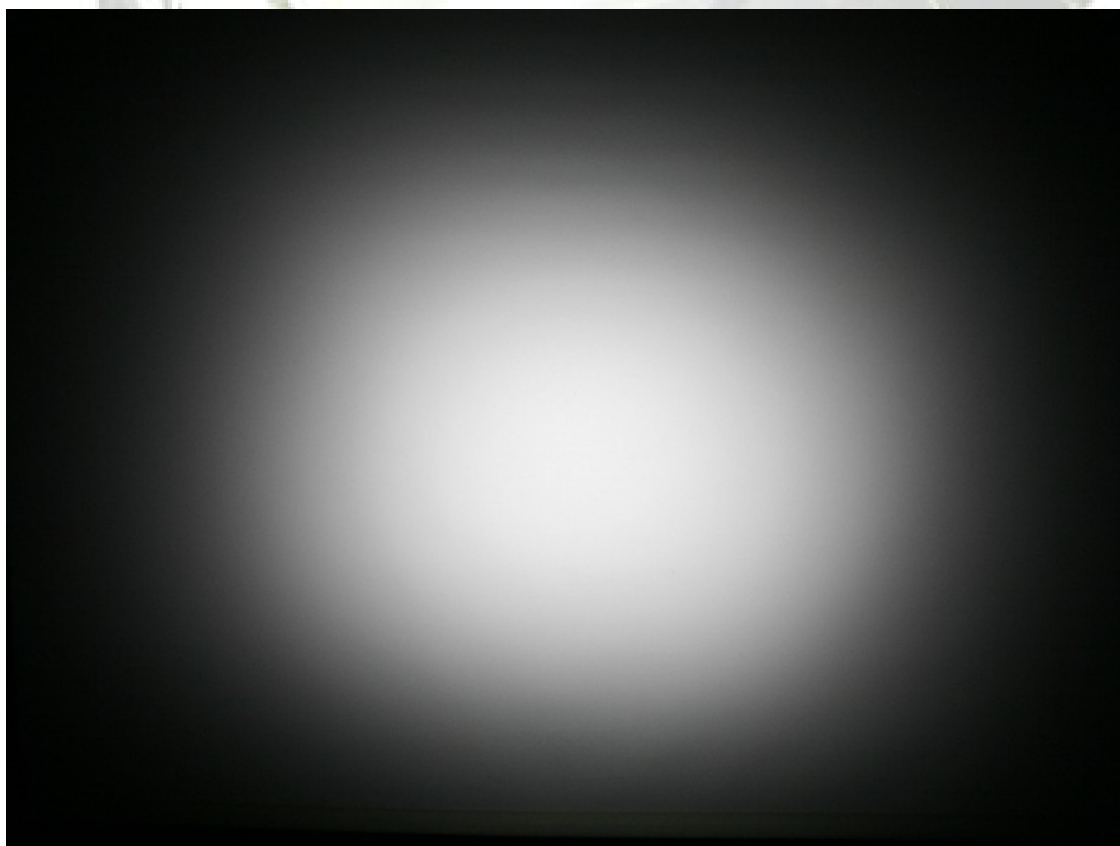
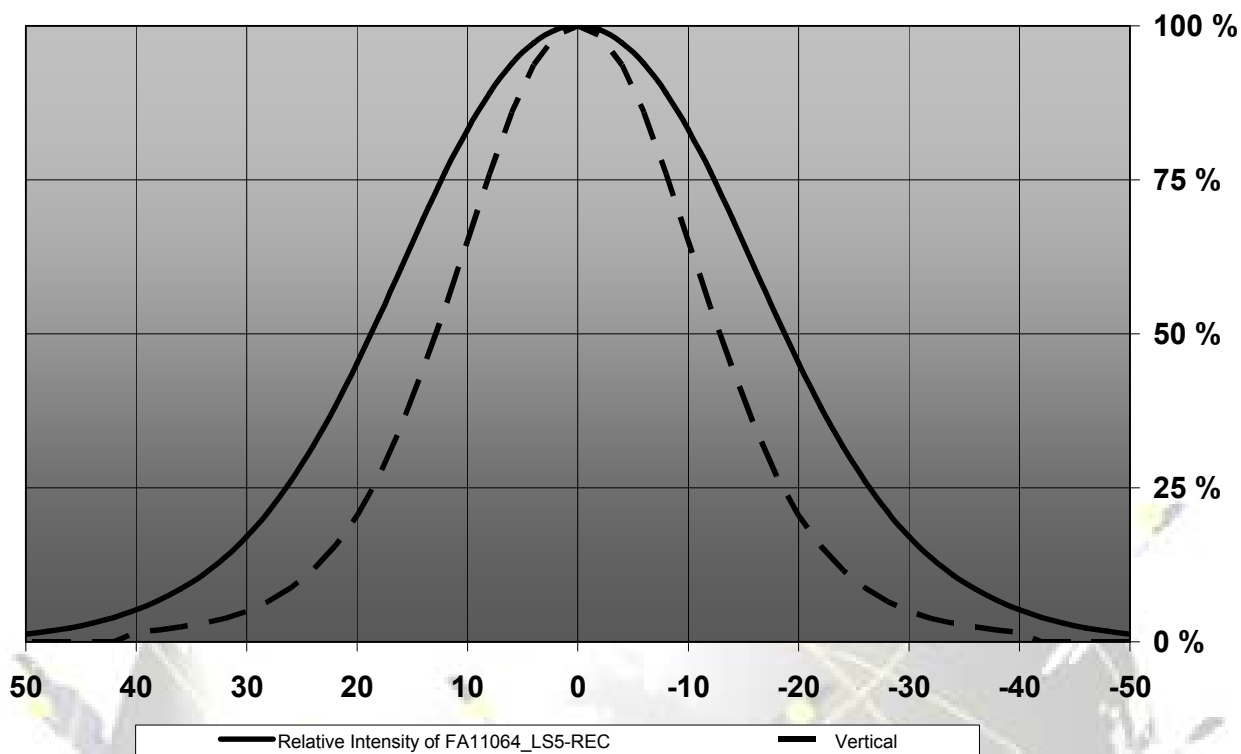
© Ledil Oy – PRELIMINARY - Subject to change without prior notice

Relative Intensity of FA11063_LS5-O-90



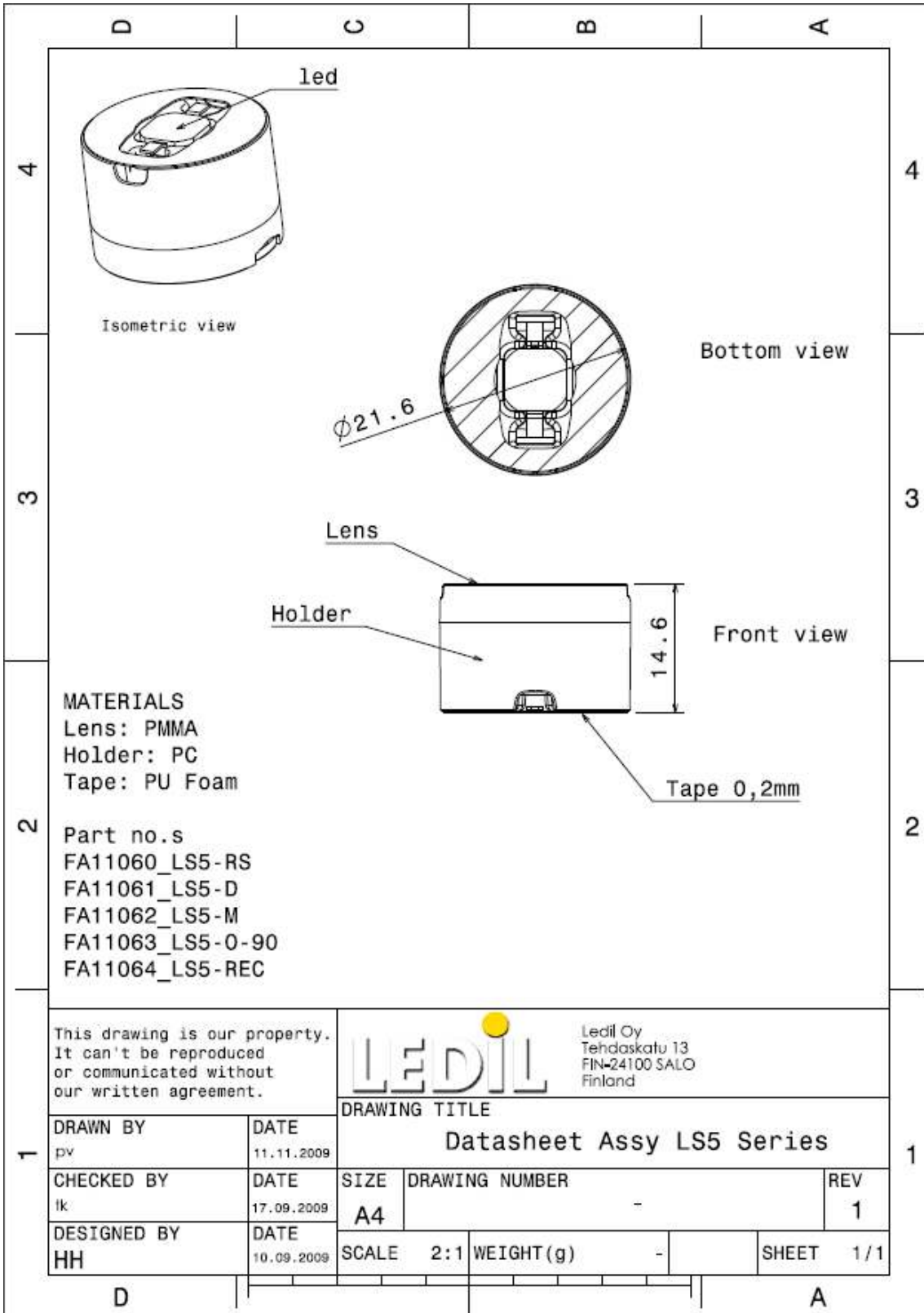
© Ledil Oy – PRELIMINARY - Subject to change without prior notice

Relative Intensity of FA11064_LS5-REC



© Ledil Oy – PRELIMINARY - Subject to change without prior notice

DRAWINGS



© Ledil Oy - PRELIMINARY - Subject to change without prior notice