

PRODUCT NUMBER

10142959-0XXLF

NOTES:

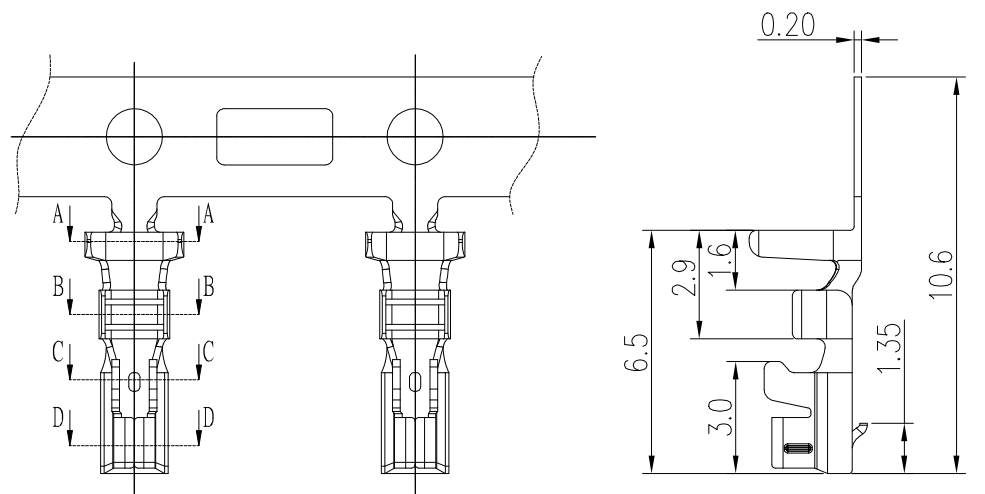
1. MATERIAL: 0.20mm THICK COPPER ALLOY
2. FINISH:
30U" NICKEL UNDER PLATING
80U" TIN ON SOLDER TAIL
3. APPLICABLE WIRES: AWG#20-#28
4. INSULATION O.D.: 1.3~1.7mm
5. RoHS COMPLIANT
6. THIS TERMINAL IS USED WITH FCI HSG: 10142958
7. PRODUCT SPEC: GS-12-1408.
8. PACKING SPEC: GS-14-2573.
6. PART NUMBER SCHEME:
10142959- 0 X X LF

FINISH:

- 1: PRE-MATTE TIN PLATED
- 2: POST-MATTE TIN PLATED
- 3: PRE-BRIGHT TIN PLATED
- 4: POST-BRIGHT TIN PLATED
- 5: GOLD PLATED

Material:

- 1: BRASS
- 2: PHOSPHOR BRONZE

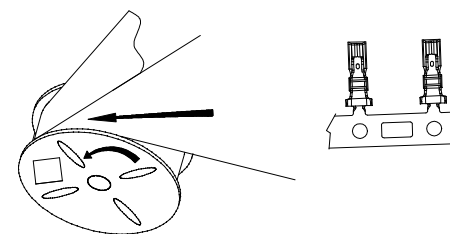


SECTION A-A


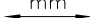
SECTION B-B

SECTION C-C

SECTION D-D



RAW INTO DIRECTION

mat'l. code				surface <input checked="" type="checkbox"/>		tolerance		projection 		product family WTB									
ltr		ecn no		dr		date		tolerances unless otherwise specified				title							
A				TONY		2017-03-01		angles		linear		.X±0.30		 mm		2.5mm Pitch Crimp Terminal			
										.XX±0.20									
								0°±5°		.XXX±0.10									
												scale N.T.S.		dwg no sheet 1 of 1 size A4					
								dr		TONY_LENG		2017-03-01							
								engr		TONY_LENG		2017-03-01							
								chr		ZK_HU		2017-03-01							
								appd		TIM_YAO		2017-03-01		type Product Customer Drawing					
sheet index		revision		A															
		sheet		1															