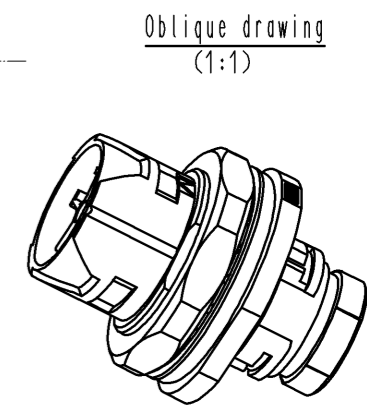
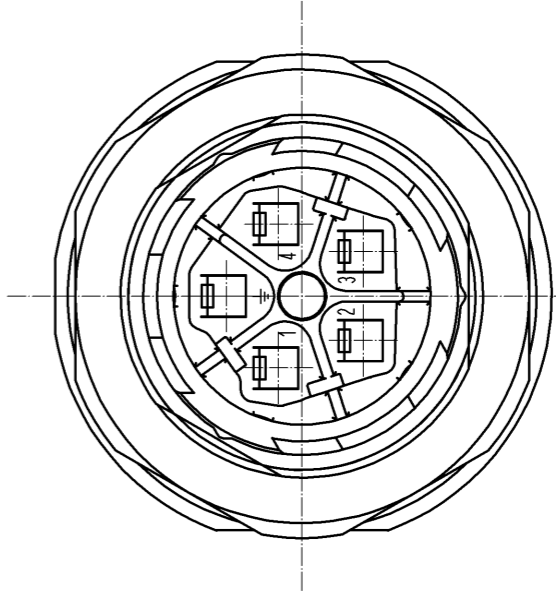
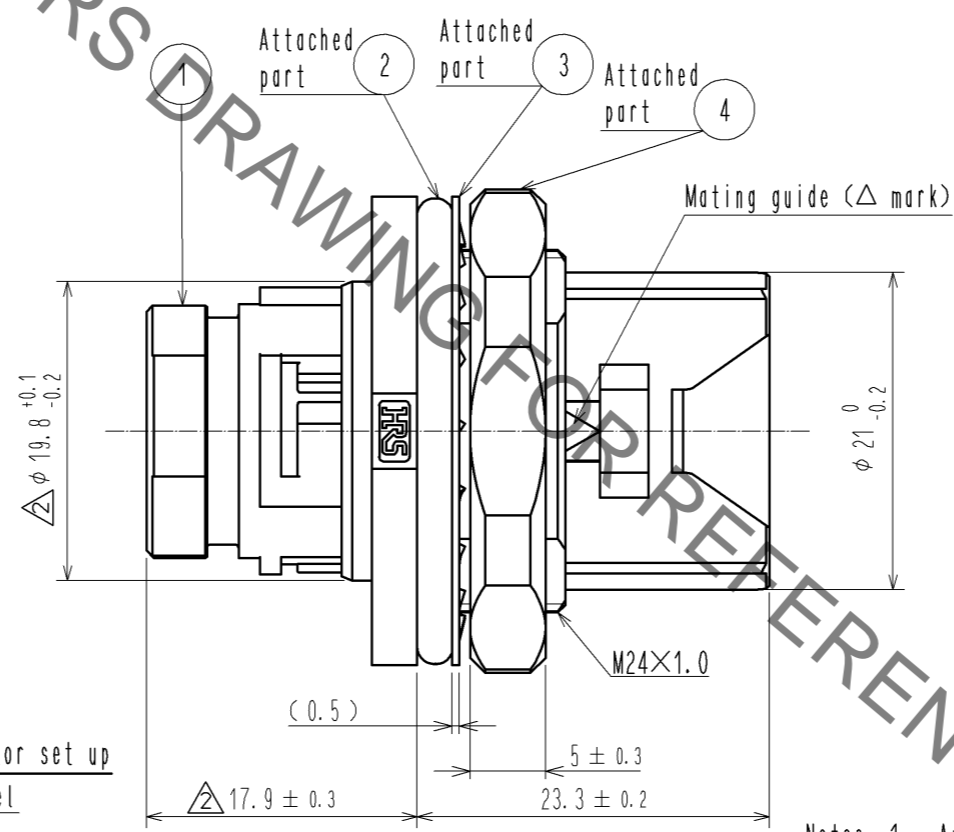
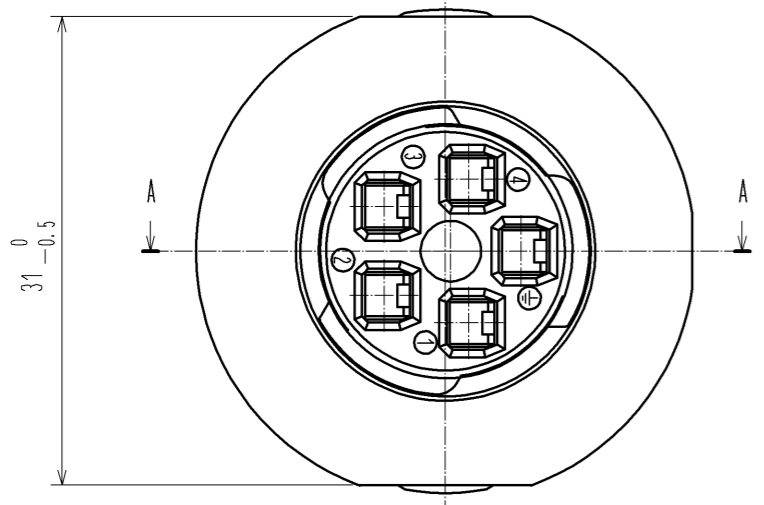
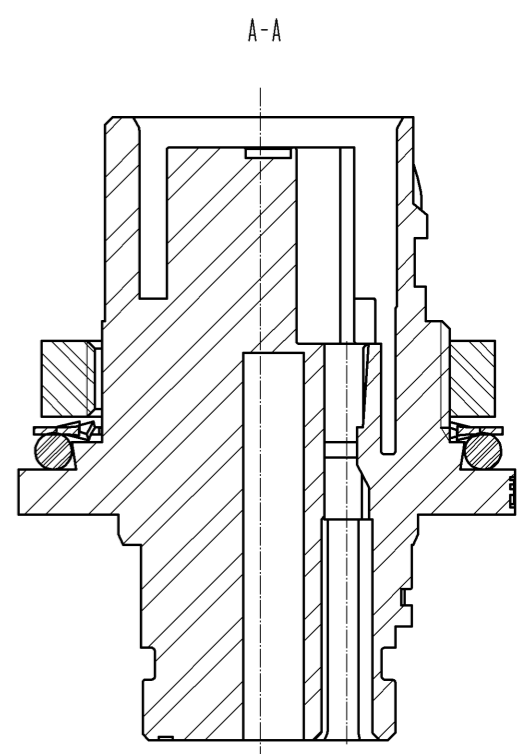
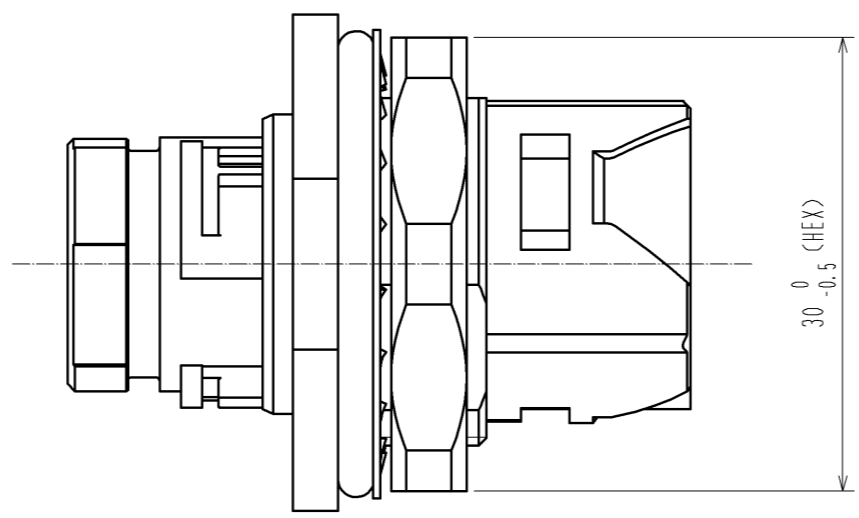
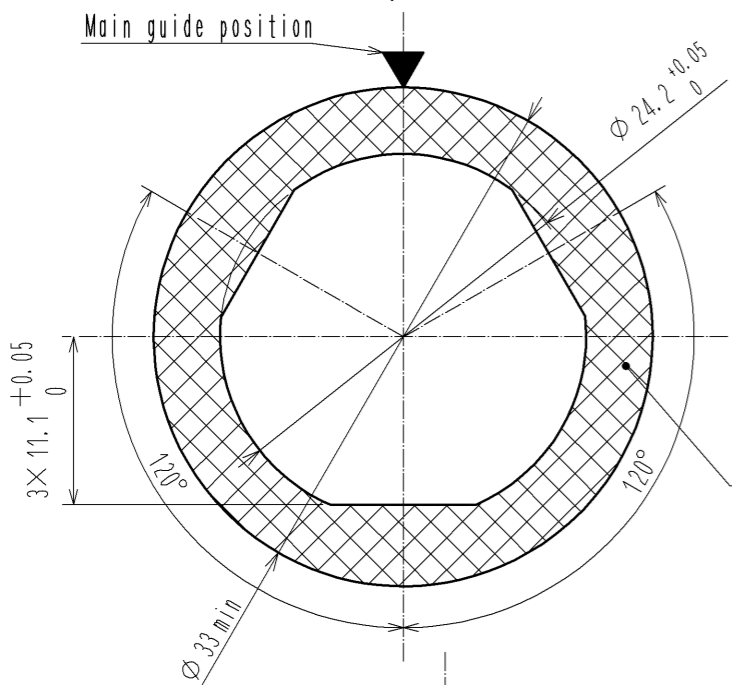
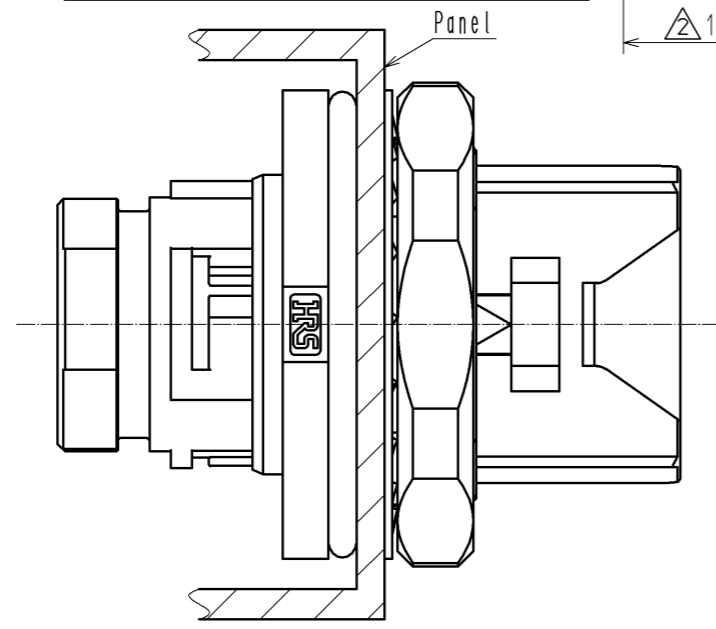


Jul.1.2019 Copyright 2019 HIROSE ELECTRIC CO., LTD. All Rights Reserved.
In case of consideration for using Automotive equipment / device which demand high reliability, kindly contact our sales window correspondents.

4 Fig.1 The recommended panel dimension(t=2.0(MAX))
(As view from mating side)



5 Fig.2 The state applicable connector set up



- Notes
- 1 Applicable crimping contact: JRC-PC-112 (CL114-0239-6)
 - 2 Applicable crimp contact extraction tool: HR41A-TP (CL150-0405-7)
 - 3 The recommended tightening torque of Ref.No. ④ to be 3 N·m.
 - 4 Fig.1 shows the recommended panel dimension.
 - 5 Fig.2 shows the state applicable connector set up.
- When connector set up, it in order of Ref.No. ②, panel, Ref.No. ③, Ref.No. ④.
Please check Ref.No. ② is properly set at the groove of Ref.No. ①.
While mounting the connector, make sure that Ref.No. ② is not caught.

2	Silicone rubber	(Red)	4	PBT	(Black)UL94V-0
1	PBT	(Black)UL94V-0	3	Stainless steel	
NO.	MATERIAL	FINISH . REMARKS	NO.	MATERIAL	FINISH . REMARKS
UNITS	mm	SCALE	2 : 1	COUNT	2
		DESCRIPTION OF REVISIONS	DESIGNED	CHECKED	DATE
		DIS-C-003503	HN. TANAKA	HY. KISHI	14. 06. 17
		APPROVED : SU. OBARA	13. 06. 13	DRAWING NO.	EDC3-118141-00
		CHECED : HY. KOBAYASHI	13. 06. 13	PART NO.	HR41A-17WBRA-5PC
		DESIGNED : HN. TANAKA	13. 06. 13	CODE NO.	CL141-0201-6-00
		DRAWN : HN. TANAKA	13. 06. 13		