

LETTERS IN CIRCLE INDICATE CHANGE FROM PRECEDING PRINT
 (K) REVISED & REDRAWN
 PAGE 1 OF 2

56 J

CONFORMING TO THE INFORMATION CONTAINED IN THIS DOCUMENT IS THE PROPERTY OF COOPER INDUSTRIES, INC. IT IS NOT FOR REPRODUCTION OR TRANSMISSION IN ANY FORM OR BY ANY MEANS, ELECTRONIC OR MECHANICAL, INCLUDING PHOTOCOPYING, RECORDING, OR BY ANY INFORMATION STORAGE AND RETRIEVAL SYSTEM, WITHOUT PERMISSION IN WRITING FROM COOPER INDUSTRIES, INC. FOR REPRODUCTION OR TRANSMISSION, WRITING PERMISSION SHOULD BE OBTAINED FROM COOPER INDUSTRIES, INC. UPON REQUEST.

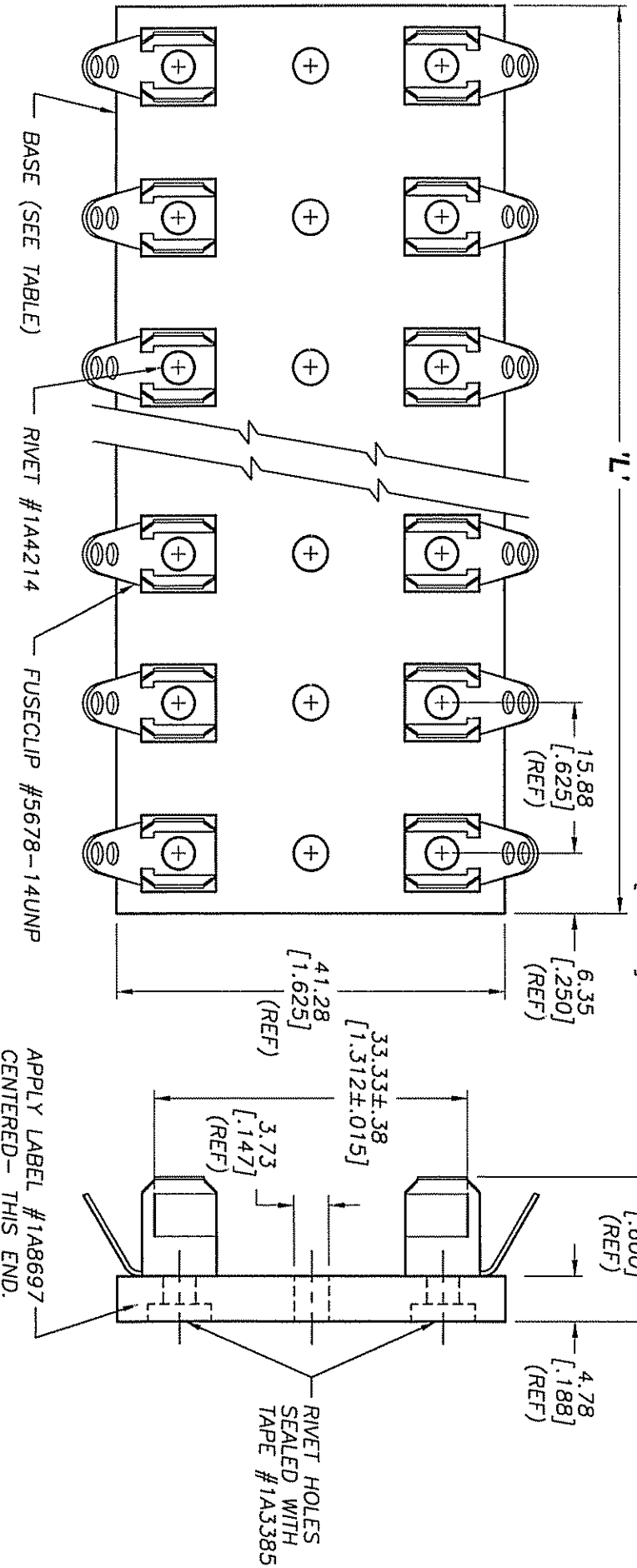
COOPER Bussmann, a division of Cooper Industries, Inc., is not responsible for the use of the information contained herein for any purpose other than that for which it was intended. The user assumes all liability for the use of the information contained herein for any purpose other than that for which it was intended. The user assumes all liability for the use of the information contained herein for any purpose other than that for which it was intended.

INDICATES CRITICAL DIMENSION OR FEATURE

UNLESS OTHERWISE SPECIFIED TOLERANCES TO BE:
 METRIC ±.13mm
 INCHES ±.005"
 ANGULAR ±2°

THIRD ANGLE PROJECTION

56476



PACKAGING SPECIFICATION #1P1063

| PART NO. | NO. OF POLES | BASE P/N | 'L' LENGTH (REF) |
|----------|--------------|----------|------------------|
| 3823-1 | 1 | 6623-1 | 12.70 [.500] |
| 3823-2 | 2 | 6623-2 | 28.58 [1.125] |
| 3823-3 | 3 | 6623-3 | 44.45 [1.750] |
| 3823-4 | 4 | 6623-4 | 60.33 [2.375] |
| 3823-5 | 5 | 6623-5 | 76.20 [3.000] |
| 3823-6 | 6 | 6623-6 | 92.08 [3.625] |

| PART NO. | NO. OF POLES | BASE P/N | 'L' LENGTH (REF) |
|----------|--------------|----------|------------------|
| 3823-7 | 7 | 6623-7 | 107.95 [4.250] |
| 3823-8 | 8 | 6623-8 | 123.83 [4.875] |
| 3823-9 | 9 | 6623-9 | 139.70 [5.500] |
| 3823-10 | 10 | 6623-10 | 155.58 [6.125] |
| 3823-12 | 12 | 6623-12 | 187.33 [7.375] |