

LETTERS IN CIRCLE INDICATE CHANGE FROM PRECEDING PRINT  
 (K) REVISED & REDRAWN  
 PAGE 1 OF 2

56 J

CONFORMING TO THE INFORMATION CONTAINED IN THIS DOCUMENT IS THE PROPERTY OF COOPER INDUSTRIES, INC. IT IS NOT TO BE REPRODUCED OR TRANSMITTED IN ANY FORM OR BY ANY MEANS, ELECTRONIC OR MECHANICAL, INCLUDING PHOTOCOPYING, RECORDING, OR BY ANY INFORMATION STORAGE AND RETRIEVAL SYSTEM, WITHOUT PERMISSION IN WRITING FROM COOPER INDUSTRIES, INC. UNAUTHORIZED REPRODUCTION OR USE OF THE INFORMATION CONTAINED HEREIN FOR ANY PURPOSE OTHER THAN THAT AUTHORIZED BY COOPER INDUSTRIES, INC. IS PROHIBITED. PERMISSION TO REPRODUCE OR TRANSMIT THIS DOCUMENT OR THE INFORMATION CONTAINED HEREIN IS GRANTED ON THE CONDITION THAT THE REQUESTING PARTY SHALL INDEMNIFY AND HOLD COOPER INDUSTRIES, INC. HARMLESS FROM AND AGAINST ALL SUCH DAMAGES, INCLUDING REASONABLE ATTORNEY'S FEES, WHICH MAY BE INCURRED BY COOPER INDUSTRIES, INC. UPON COOPERATION OF THE PURPOSER FOR WHICH IT IS OBTAINED OR UPON REQUEST.

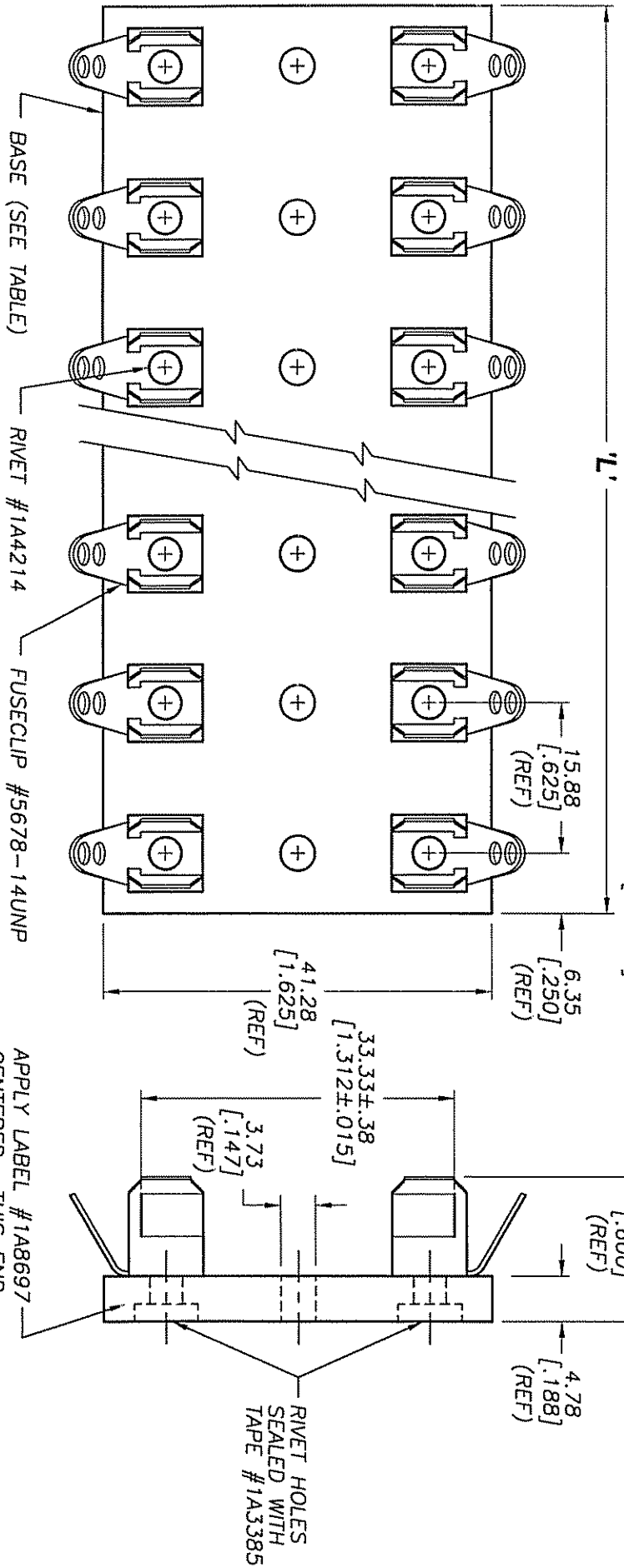
COOPER/COOPER INDUSTRIES, INC. disclaims any liability for work performed by the user of this product. Further, statements or drawings are not to be construed as a contract. The user is advised to select appropriate safety equipment and to use proper safety practices when using this product. The user is advised to read the instructions and warnings carefully and to follow them closely. The user is advised to use the product only for the purposes for which it is intended and to use it only in accordance with the instructions and warnings. The user is advised to use the product only in accordance with the instructions and warnings. The user is advised to use the product only in accordance with the instructions and warnings.

INDICATES CRITICAL DIMENSION OR FEATURE

UNLESS OTHERWISE SPECIFIED TOLERANCES TO BE: METRIC ±.13mm INCHES ±.005" ANGULAR ±2°

THIRD ANGLE PROJECTION

56476



PACKAGING SPECIFICATION #1P1063

PART NO.	NO. OF POLES	BASE P/N	'L' LENGTH (REF)
3823-1	1	6623-1	12.70 [.500]
3823-2	2	6623-2	28.58 [1.125]
3823-3	3	6623-3	44.45 [1.750]
3823-4	4	6623-4	60.33 [2.375]
3823-5	5	6623-5	76.20 [3.000]
3823-6	6	6623-6	92.08 [3.625]

PART NO.	NO. OF POLES	BASE P/N	'L' LENGTH (REF)
3823-7	7	6623-7	107.95 [4.250]
3823-8	8	6623-8	123.83 [4.875]
3823-9	9	6623-9	139.70 [5.500]
3823-10	10	6623-10	155.58 [6.125]
3823-12	12	6623-12	187.33 [7.375]

APPLY LABEL #1A8697 CENTERED - THIS END.

RIVET HOLES SEALED WITH TAPE #1A3385