

REVISIONS  
 (K) REVISED & REDRAWN

LETTERS IN CIRCLE INDICATE CHANGE FROM PRECEDING PRINT  
 PAGE 1 OF 2

56 J

CONFORMING TO THE INFORMATION CONTAINED IN THIS DOCUMENT IS THE PROPERTY OF COOPER INDUSTRIES, INC. IT IS NOT TO BE REPRODUCED OR TRANSMITTED IN ANY FORM OR BY ANY MEANS, ELECTRONIC OR MECHANICAL, INCLUDING PHOTOCOPYING, RECORDING, OR BY ANY INFORMATION STORAGE AND RETRIEVAL SYSTEM, WITHOUT THE WRITTEN PERMISSION OF COOPER INDUSTRIES, INC. UNAUTHORIZED REPRODUCTION OR USE OF THE INFORMATION CONTAINED HEREIN FOR ANY PURPOSE OTHER THAN THAT AUTHORIZED BY COOPER INDUSTRIES, INC. IS PROHIBITED. THIS DOCUMENT IS UNCLASSIFIED UPON COMPLETION OF THE PURPOSE FOR WHICH IT IS ISSUED OR UPON REQUEST.

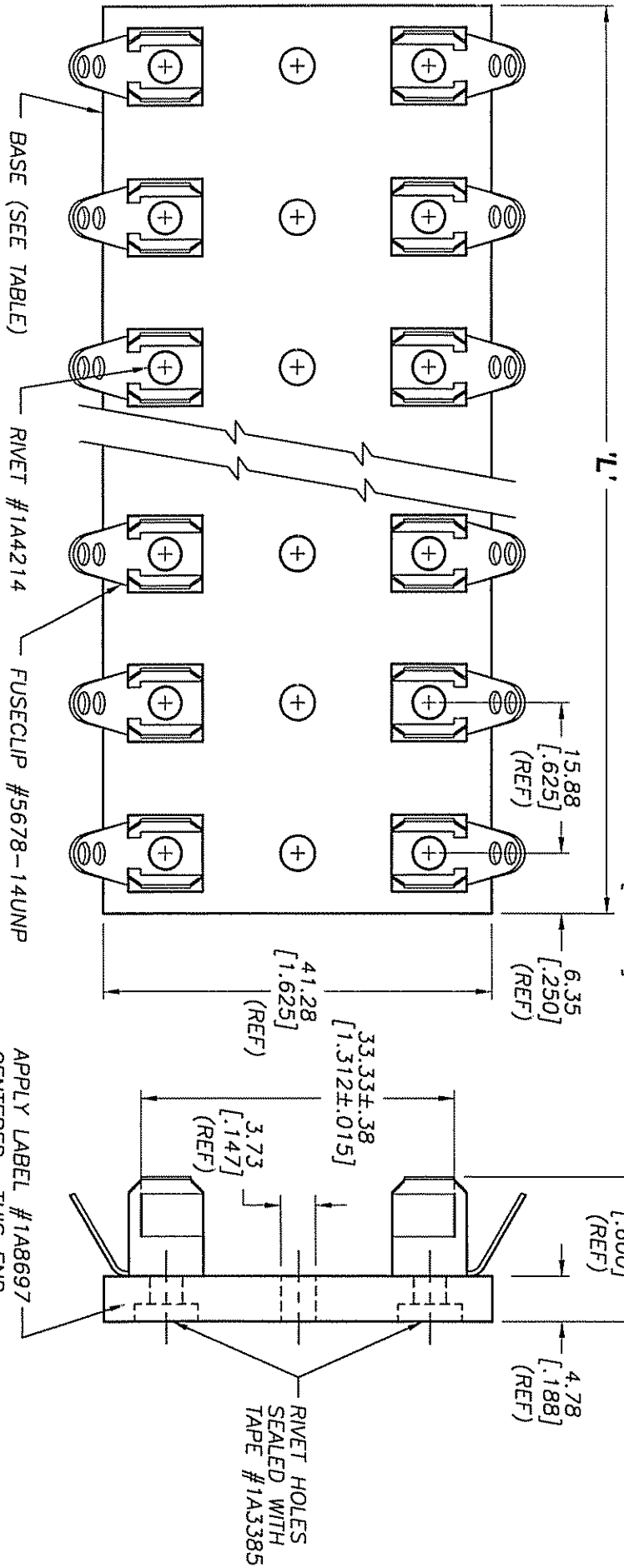
COOPER Bussmann, a division of Cooper Industries, Inc., is not responsible for the use of this information for any purpose other than that for which it was intended. The user assumes all liability for any damage or injury resulting from the use of this information. The user agrees to indemnify and hold Cooper Industries, Inc. harmless from and against all claims, damages, and expenses, including reasonable attorneys' fees, which may be asserted against or incurred by Cooper Industries, Inc. in connection with the use of this information.

INDICATES CRITICAL DIMENSION OR FEATURE

UNLESS OTHERWISE SPECIFIED TOLERANCES TO BE:  
 METRIC ±.13mm  
 INCHES ±.005"  
 ANGULAR ±2°

THIRD ANGLE PROJECTION

56476



PACKAGING SPECIFICATION #1P1063

PART NO.	NO. OF POLES	BASE P/N	'L' LENGTH (REF)
3823-1	1	6623-1	12.70 [.500]
3823-2	2	6623-2	28.58 [1.125]
3823-3	3	6623-3	44.45 [1.750]
3823-4	4	6623-4	60.33 [2.375]
3823-5	5	6623-5	76.20 [3.000]
3823-6	6	6623-6	92.08 [3.625]

PART NO.	NO. OF POLES	BASE P/N	'L' LENGTH (REF)
3823-7	7	6623-7	107.95 [4.250]
3823-8	8	6623-8	123.83 [4.875]
3823-9	9	6623-9	139.70 [5.500]
3823-10	10	6623-10	155.58 [6.125]
3823-12	12	6623-12	187.33 [7.375]

APPLY LABEL #1A8697  
 CENTERED - THIS END.