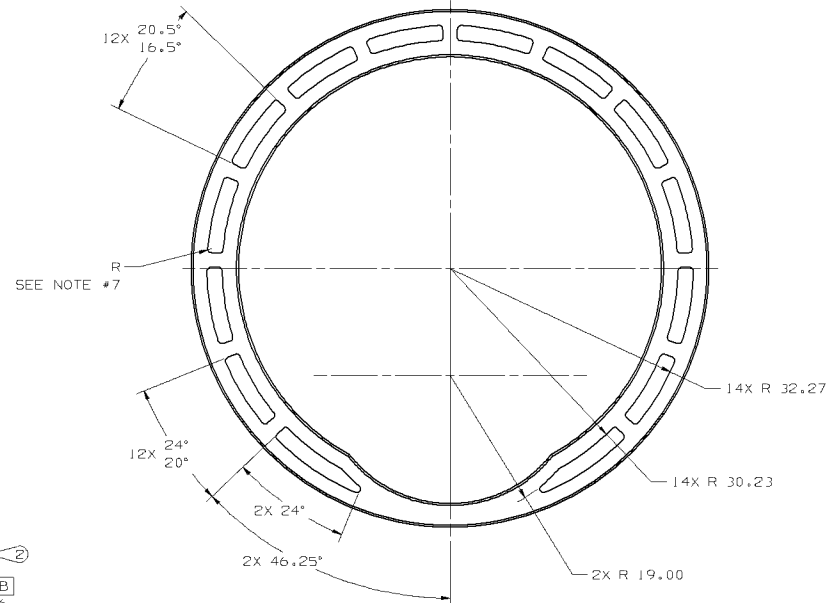
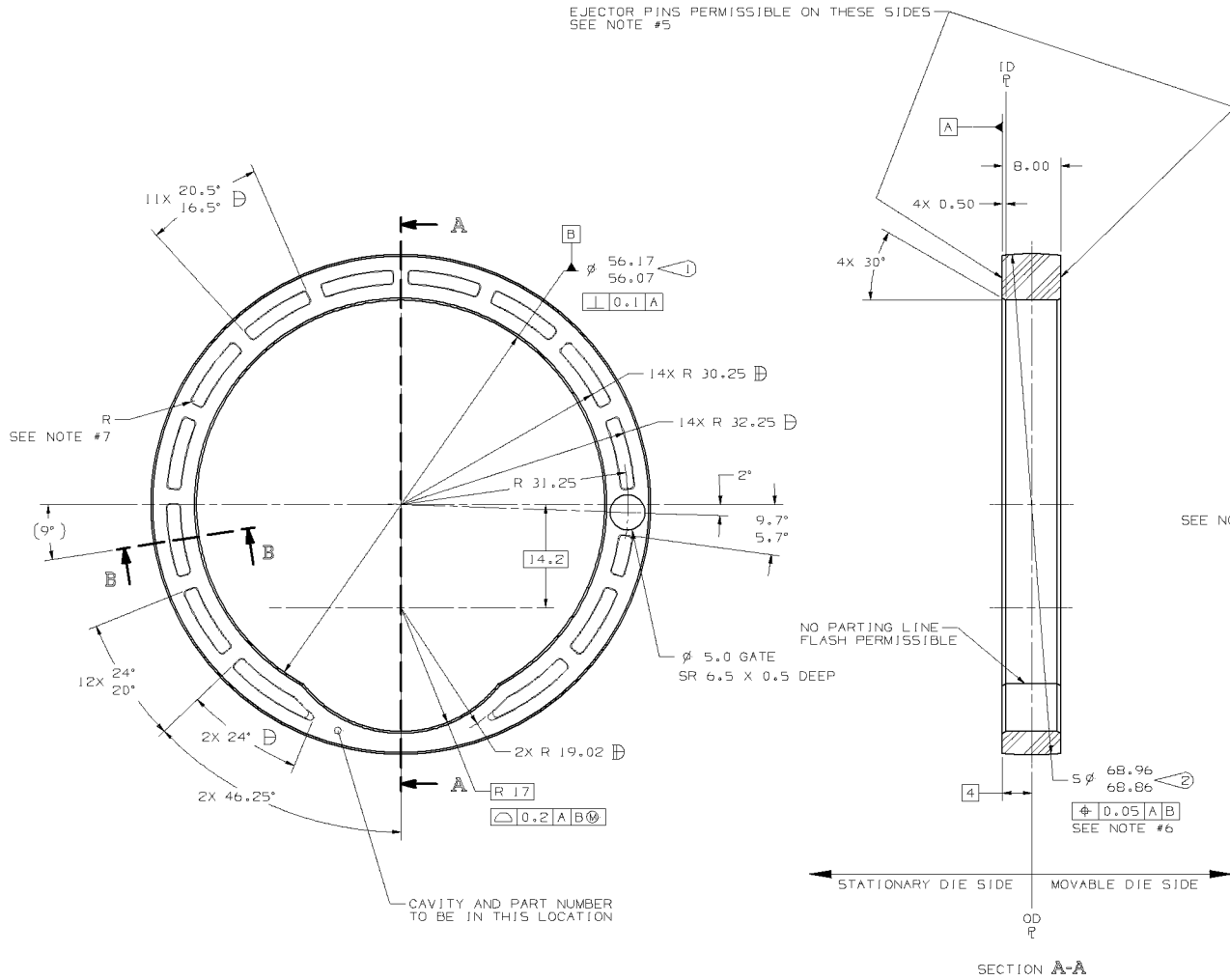


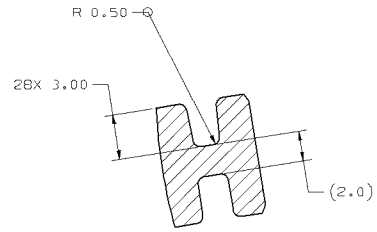
008B

- 1 - MATERIAL: NYLON 6,6, 33% GLASS FIBER REINFORCED, HEAT STABILIZED RESIN PER DELPHI PACKARD SPECIFICATION M4682025 MAX REGRIND 25%, COLOR GREY.
- 2 - BULK AND PURCHASED PART MATERIAL SHALL BE HOMOGENEOUS AND FREE OF CONTAMINATION. PURCHASED PARTS SHALL ALSO BE FREE OF POROSITY, WARPAGE, CHECKS OR CRACKS, SPLAY, BURN MARKS, CHIPPED EDGES, BLISTERS AND UNEVEN SURFACES. PARTS SHALL ALSO BE FREE OF POTENTIAL LIMITATIONS SUCH AS EXCESS FLASH AND WELD, KNIT OR FLOW LINES. EXCEPTIONS TO ANY OF THESE CRITERIA MUST BE DOCUMENTED BY THE SUPPLIER USING STANDARDS AGREEABLE TO ENGINEERING. THE STANDARDS MAY CONSIST OF DEFINED PARAMETERS, BOUNDARY SAMPLES AND/OR PHOTOS.
- 3 - 0.15 MAX FLASH PERMISSIBLE EXCEPT WHERE NOTED.
- 4 - UNLESS OTHERWISE SPECIFIED:
-ALL RADII 0.50
-ALL DRAFT ANGLES FOR ALL RECESSED AREAS ON STATIONARY DIE SIDE TO BE 3.0°.
-NO DRAFT ON RECESSED AREAS ON MOVABLE DIE SIDE.
- ⊞ DRAFT INCLUDED
⊞ MINUS DRAFT
⊞ PLUS DRAFT
- 5 - EJECTOR PIN MARKS TO BE FLUSH TO 0.50MM RECESSED.
- 6 - 5 ϕ 68.96/68.86 Φ 0.05 A B APPLIES WHEN PRESSED ONTO ϕ 56.225 MANDREL.
- 7 - ALL MATERIAL SAVER RADII TO BE RADIUS 0.50 UNLESS OTHERWISE SPECIFIED.

DWG STATUS					ZONE	REVISION HISTORY		AUTH	DR	APVD 1	APVD 2
DATE	STG	REV	N/P	CHG							
26NR09		008			A	---	REDRAWN WITH CHANGE				
					B	M7	MATERIAL NOTE REVISED				
					C	---	ENGNG RELEASE	10805 51687	08	MM	



ACTUAL SIZE



PART DRAWING			
CODE NUMBER		DISTR CODE	
6900		D	
AUTH			
408329			
DWG DATE			
260609			

DESIGNATED CHARACTERISTICS				QC1		KPC	
2	LAST NO USED		FIT/FUNCTION	⊞	C1	⊞	FF
0	2	TOTAL ON DRAWING					
SAFETY/COMPLIANCE				⊞	QS	⊞	SC
KPC	QC1						
NO	NO	TYPE	DESCRIPTION	RATIONALE	ZONE	SH	PTS
	1	FF	I.D.	INTERFACE	J12	1	
	2	FF	O.D.	INTERFACE	F9	1	

APPROXIMATED VOLUME (REF)
7.74 cm³

UNLESS OTHERWISE SPECIFIED
THIS DOCUMENT IS IN ACCORDANCE WITH ASME Y14.5M-1994 AS AMENDED BY THE BM GLOBAL DIMENSIONING AND TOLERANCE ADDENDUM-1997. ALL GEOMETRIC TOLERANCES AND RELATED DATUMS APPLY RFS. RULE #1 (PERFECT FORM) IF MUCH DOES NOT APPLY WHEN RELATIONSHIP BETWEEN FEATURES IS ESTABLISHED BY ORIENTATION OR LOCATION TOLERANCES. SEPARATE POSITION CALLOUTS MAY BE OMDG SEPARATELY REGARDLESS OF DATUM REFERENCES.

ALL DIMENSIONS ARE IN MILLIMETERS
ZERO PLACE DECIMALS : 1
ONE PLACE DECIMALS : 0.5
TWO PLACE DECIMALS : 0.25
ANGLES ± 0.5 DEGREE

REVISIONS
28102202.001

THIRD ANGLE
PROJECTION

DO NOT
SCALE

USE MATN
DATA

3/4
NXT

DIMENSIONS MARKED "REF" OR ENCLOSED IN () ARE FOR INFORMATION PURPOSES ONLY AND DO NOT CONTROL MANUFACTURING OR INSPECTION OPERATIONS

UNLESS OTHERWISE SPECIFIED:
-DIAS SHOWN ON COMMON CENTERS Φ 0.5
-COUNTERSINK ALL TAPPED HOLES APPROX 90° INCLUDED ANGLE TO A DIA 0.3 TO 1.0 GREATER THAN MAJOR DIA OF THREAD

DELPHI

DELPHI STEERING
2902 HOLLAND RD., SHELBYVILLE, KY 40081-9494 USA

THIS DRAWING IS THE PROPERTY OF DELPHI CORPORATION. NO RIGHTS ARE GRANTED TO USE THIS DRAWING FOR ANY PURPOSE OTHER THAN THE FURNISHING OF SERVICES AND SUPPLIES TO DELPHI CORPORATION.

DR	DATE
M. LEWIS	25 JUL 08
APVD: M. WISNIEWSKI	06MY09
APVD: T. DODAK	08MY09
APVD: S. BISKUPSKI	07MY09
APVD: K. HAUSENSTRICKER	08MY09
APVD: J. KENNEDY	08MY09

SUBSTANCES OF CONCERN AND RECYCLED CONTENT PER DELPHI (2004000)

SEE GENERAL NOTES

DRAWING NAME

RING, CENTERING

DRAWING NUMBER

28189575

SIZE A0 SCALE 3:1 FRAME NO 1 OF 1 SHEET NO 1 OF 1 STG REV N/P 008

PRE-PRODUCTION RELEASE - DRAWING UNDER REVISION CONTROL