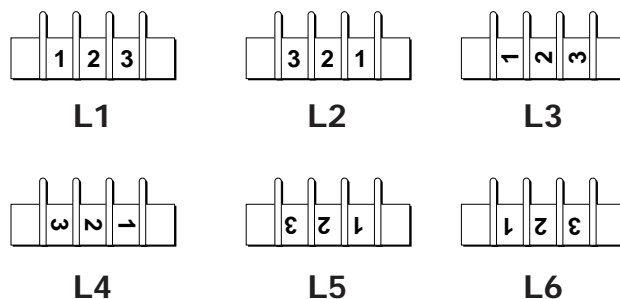


Marking Options and Covers for Double Row Series

Standard Marking

Standard markings are applied directly to the side(s) of a block. Standard color is white. Standard height is 0.125 inches (3.17mm).

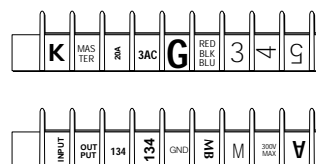
Note: Blocks marked on both sides require a different code for each side. Example Style L1 on one side of the block requires Style L2 on the other side to ensure common terminal marking. To order, add appropriate suffix (L1, L2, L3, L4, L5 and/or L6) to block catalog number in the proper sequence.



Special Marking

Special markings are available at an additional charge for preparation. Production charges for setup, handling and marking are the same as for standard marking. Drawing(s) must be submitted to ensure accuracy of part required. Consult Cooper Bussmann for price and delivery.

Note: Marking is not available on TB400 Series

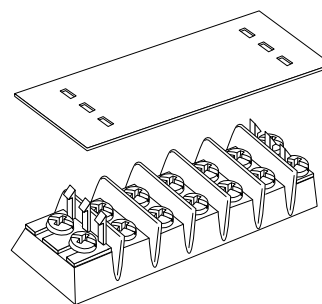


Covers

Covers prevent personnel, screws and foreign items from contacting live terminals. Available in white or clear plastic. Two cover clips supplied with each cover. Cover width is 1.31 inches (33.3mm).

All covers must be ordered separately. Consult Cooper Bussmann for special legends.

Example: 10 position cover, white, TB100 Series, no legends
= Catalog Number **X12010**.



Catalog Number Build-A-Code

| Series | Cover Strip | Poles | High Barrier Option Only | Cover Clips – Bulk |
|--------|--|---|--|--------------------------|
| X | <input type="checkbox"/> <input type="checkbox"/> <input type="checkbox"/> | <input type="checkbox"/> <input type="checkbox"/> | <input type="checkbox"/> <input type="checkbox"/> | Part Number |
| | 120 - TB100/white | 02 to 36 (TB100) | HB = High Barrier | DD1-J – TB100 Series |
| | 119 - TB100/clear | 02 to 30 (TB200/TB200HB) | | DD2-J – TB200 Series |
| | 220 - TB200/TB200HB - white | 02 to 24 (TB300/TB345) | Example: 10 position cover, white, TB100 Series, no legends . . . | DD2HB-J – TB200HB Series |
| | 219 - TB200/TB200HB - clear | | Part number is X12010. | DD3-J – TB300 Series |
| | 320 - TB300 & TB345 - white | | | |
| | 319 - TB300 & TB345 - clear | | | |

Note: Covers are not available on TB400 Series.