

LED Reflector Holder round with 5 mm LED



Housing chrome
LED red
Without pre-resistor with exposed LED and external reflector



Housing black dull
LED red
Chalice shape with internal reflector



Housing chrome
LED green
Chalice shape with internal reflector



Housing black dull
LED red
Exposed LED and external reflector

See below:

Approvals and Compliances

Description

- Panel Mounting
- Illumination with 5 mm LED
- available with or without series resistor
- Housing chrome plated or black dull
- Solder terminals

Weblinks

[pdf data sheet](#), [html datasheet](#), [CAD-Drawings](#), [Detailed request for product](#)

Technical Data

Electrical Data

| | |
|---------------------|---------------------------------------|
| Current consumption | 10 mA with Built-in Multiplier |
| LED | Technical data LED see separate table |

Climatical Data

| | |
|---------------------------|---------------|
| Allowable Operation Temp. | -25 to 55 °C |
| Storage Temperature | -55 to 100 °C |
| Protection Class | IP67 |

Soldering Data

| | |
|------------------------------|--|
| Solderability | 235 °C / 2 sec acc. to IEC 60068-2-20 , Test Ta, method 1 |
| Resistance to Soldering Heat | 350 °C / 5 sec acc. to IEC 60068-2-20 , Test Tb, method 1B |

Material

| | |
|------------------|---------------------|
| Housings | Brass chrome-plated |
| Solder terminals | Tin-Plated Copper |
| Nut | Nickel-Plated Brass |
| Sealing | Nitril rubber |

Technical Data LED

| | LED red | LED green | LED yellow |
|--------------------------------|---------------------------|---------------------------|---------------------------|
| Let-through current DC IF max. | 30 mA | 30 mA | 30 mA |
| Power Loss PV max. | 100 mW | 100 mW | 100 mW |
| Forward voltage | typ. 2.0 V; max. 3.0 V | typ. 2.4 V; max. 3.0 V | typ. 2.4 V; max. 3.0 V |
| Luminous intensity | min. 6.3 mcd; typ. 10 mcd | min. 6.3 mcd; typ. 10 mcd | min. 6.3 mcd; typ. 12 mcd |
| Viewing angle | 60° | 60° | 60° |
| Peak wave length | typ. 635 nm | typ. 565 nm | typ. 585 nm |
| Reverse voltage | typ. 15 V | typ. 15 V | typ. 15 V |

Approvals and Compliances

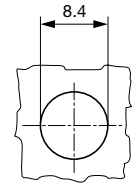
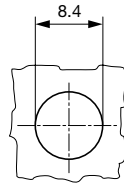
Detailed information on product approvals, code requirements, usage instructions and detailed test conditions can be looked up in [Details about Approvals](#)

SCHURTER products are designed for use in industrial environments. They have approvals from independent testing bodies according to national and international standards. Products with specific characteristics and requirements such as required in the automotive sector according to IATF 16949, medical technology according to ISO 13485 or in the aerospace industry can be offered exclusively with customer-specific, individual agreements by SCHURTER.

The product complies with following Guide Lines

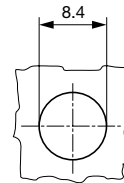
Dimension [mm]

LFM without resistor with internal reflector




Technical drawing of a bolt assembly. The drawing shows a bolt with a hexagonal head and a threaded shank. The dimensions are as follows:

- Head diameter: $\varnothing 10$
- Head width: max. 6
- Head thickness: 2
- Shank diameter: M8x0.75
- Shank length: 27
- Thread length: 4
- Distance from head to thread start: 10
- Distance from head to end of shank: max. 32
- Distance from head to end of thread: max. 5
- Distance from thread start to end of shank: 1.4
- Label: - Pol



| Type | Multiplier | Housings | Supply Voltage | Color LED | Order Number |
|--------------------|------------|---------------|----------------|-----------|--------------|
| Internal Reflector | with | chrome-plated | 24VDC | red | 0035.0607 |
| Internal Reflector | with | chrome-plated | 24VDC | green | 0035.0608 |
| Internal Reflector | with | chrome-plated | 24VDC | yellow | 0035.0609 |
| Outside Reflector | with | black dull | 12VDC | red | 0035.0664 |
| Outside Reflector | with | black dull | 12VDC | green | 0035.0665 |
| Outside Reflector | with | black dull | 12VDC | yellow | 0035.0666 |
| Outside Reflector | with | black dull | 24VDC | red | 0035.0667 |
| Outside Reflector | with | black dull | 24VDC | green | 0035.0668 |
| Outside Reflector | with | black dull | 24VDC | yellow | 0035.0669 |
| Internal Reflector | without | black dull | - | red | 0035.0726 |
| Internal Reflector | without | black dull | - | green | 0035.0727 |

| Type | Multiplier | Housings | Supply Voltage | Color LED | Order Number |
|--------------------|------------|------------|----------------|-----------|--------------|
| Internal Reflector | without | black dull | - | yellow | 0035.0728 |

 Most Popular.

Availability for all products can be searched real-time:<https://www.schurter.com/en/Stock-Check/Stock-Check-SCHURTER>

| | |
|-----------------------|--------|
| Packaging unit | 50 pcs |
|-----------------------|--------|