

## DAISSY-4X1-W-WHT

~50° wide beam. 4X1 variant in gloss white.

### TECHNICAL SPECIFICATIONS:

Dimensions	182.0 x 40.0 mm
Height	20.2 mm
Fastening	pin, screw, clips
ROHS compliant	yes ⓘ

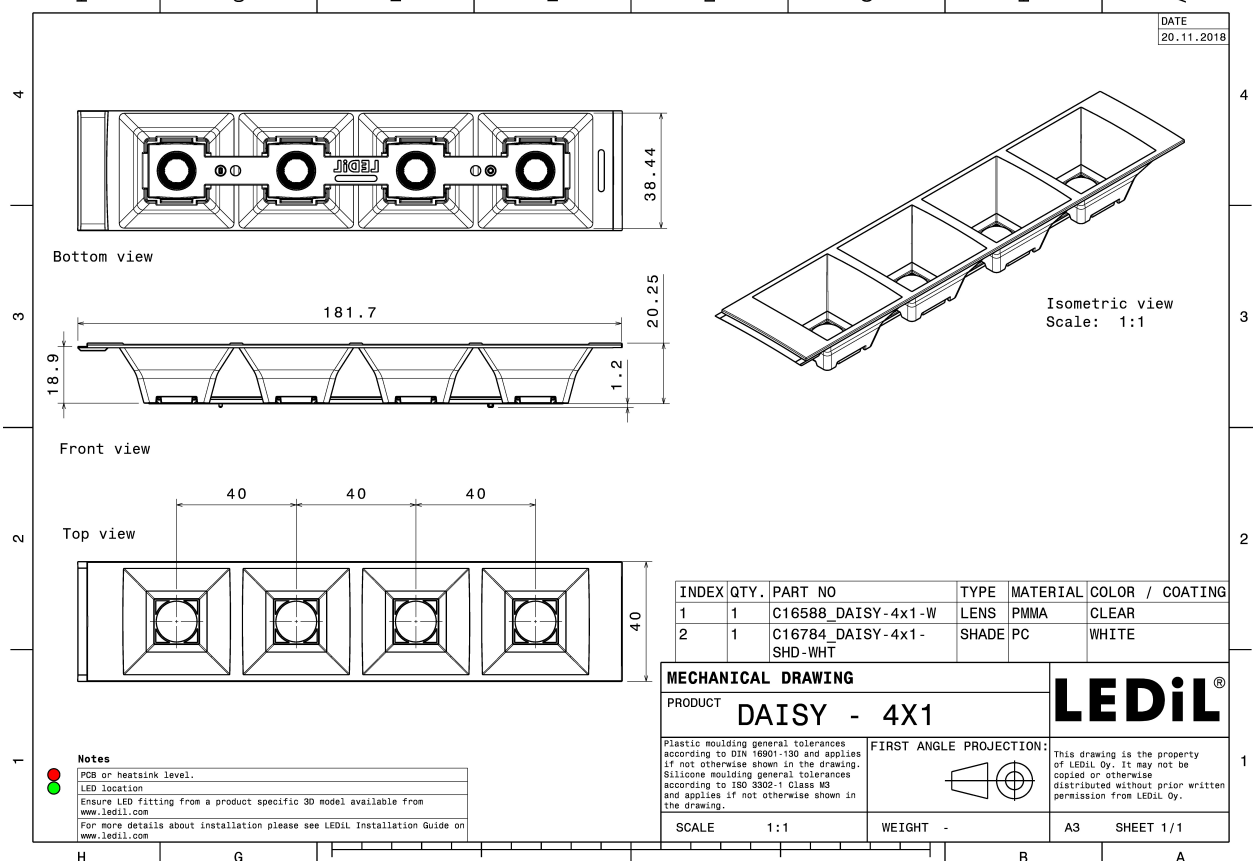
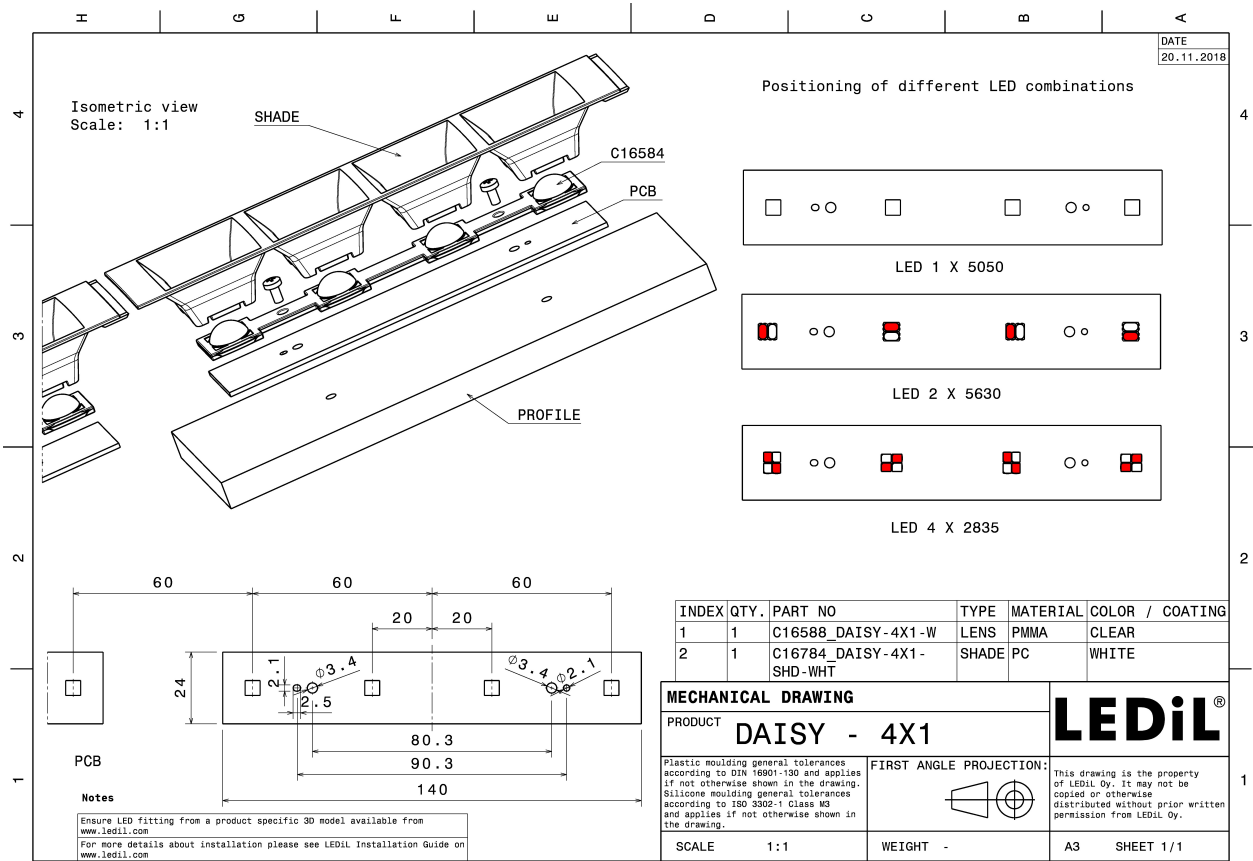
### MATERIAL SPECIFICATIONS:

Component	Type	Material	Colour	Finish
DAISSY-4X1-W	Linear lens	PMMA		
DAISSY-4X1-SHD-WHT	Shade	PC		gloss

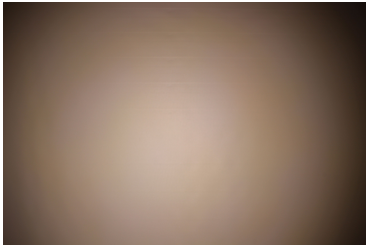
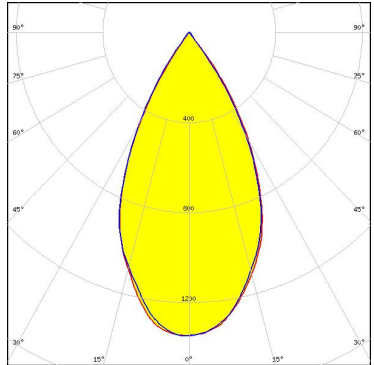
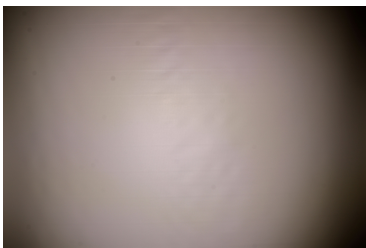
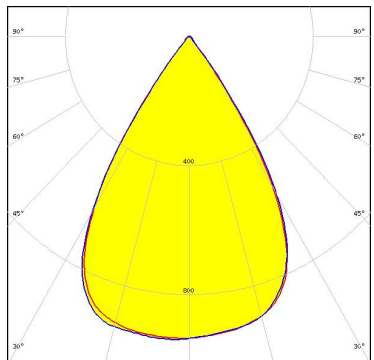

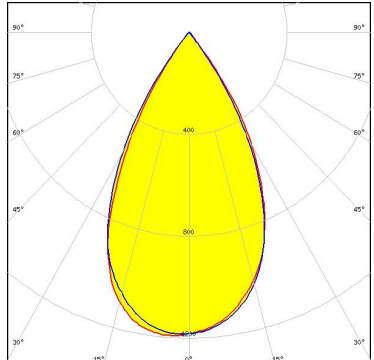
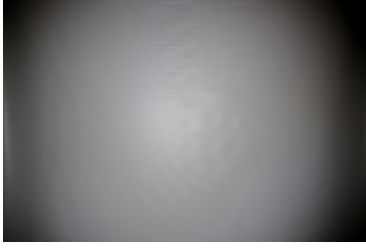
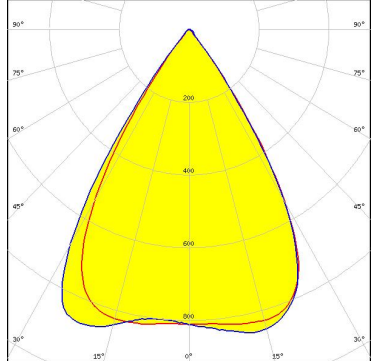


### ORDERING INFORMATION:

Component		Qty in box	MOQ	MPQ	Box weight (kg)
CN16788_DAISSY-4X1-W-WHT	Linear lens	504	84	42	0.0
» Box size:					



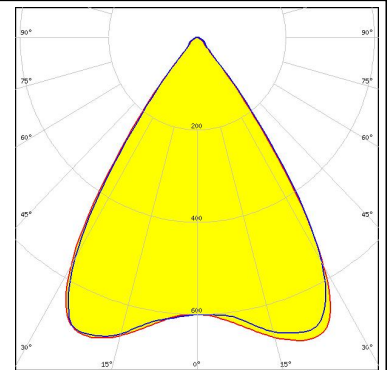
#### PHOTOMETRIC DATA (MEASURED):

<p><b>NICHIA</b></p> <p>LED NF2W757G-MT (Tunable White)            FWHM 53.0°            Efficiency 96 %            Peak intensity 1.349 cd/lm            LEDs/each optic 1            Light colour Tunable White            Required components:</p>		
<p><b>SAMSUNG</b></p> <p>LED LM28xB Series            FWHM 64.0°            Efficiency 94 %            Peak intensity 0.940 cd/lm            LEDs/each optic 4            Light colour White            Required components:</p>		
<p><b>SAMSUNG</b></p> <p>LED LM28xB Series            FWHM 56.0°            Efficiency 94 %            Peak intensity 1.200 cd/lm            LEDs/each optic 2            Light colour White            Required components:</p>		
<p><b>SEOUL SEMICONDUCTOR</b></p> <p>LED SEOUL DC 3030            FWHM 66.0°            Efficiency 92 %            Peak intensity 0.886 cd/lm            LEDs/each optic 4            Light colour Tunable White            Required components:</p>		

#### PHOTOMETRIC DATA (MEASURED):

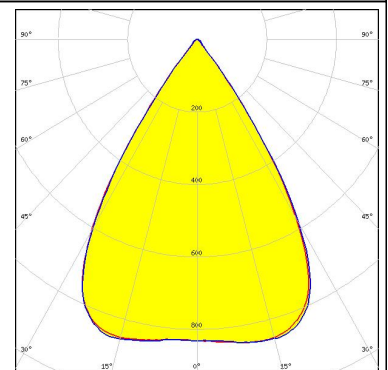
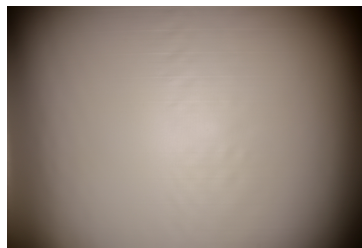


LED PassivePAQ-L-0.5F35-SSA3-1.6K-840-3-DC  
 FWHM 69.0°  
 Efficiency 92 %  
 Peak intensity 0.787 cd/lm  
 LEDs/each optic 4  
 Light colour White  
 Required components:



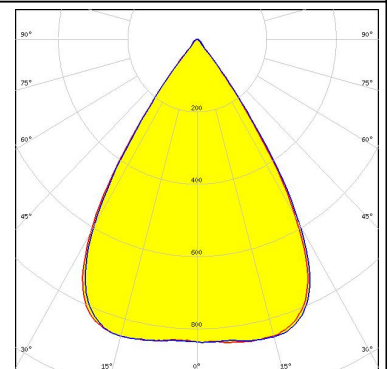
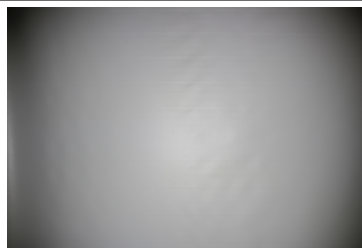
#### TRIDONIC

LED LLE 24x140mm 400lm 827-865 LVD ADV1  
 FWHM 66.0°  
 Efficiency 94 %  
 Peak intensity 0.870 cd/lm  
 LEDs/each optic 4  
 Light colour White  
 Required components:



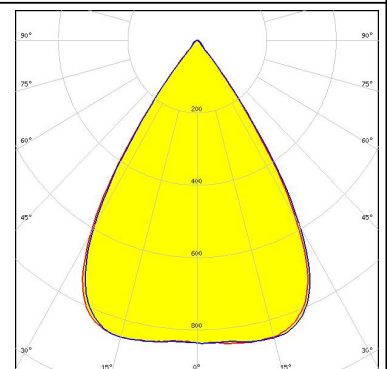
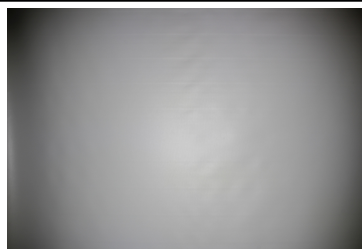
#### TRIDONIC

LED LLE 24x140mm 400lm 8x0 LVD ADV1  
 FWHM 66.0°  
 Efficiency 94 %  
 Peak intensity 0.866 cd/lm  
 LEDs/each optic 4  
 Light colour White  
 Required components:



#### TRIDONIC

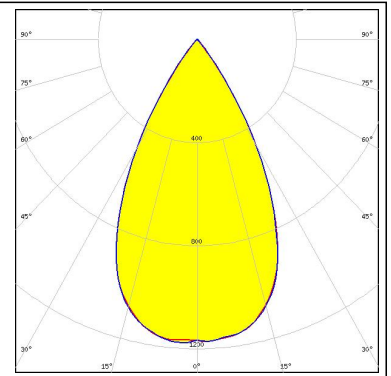
LED LLE 24x280mm 750lm 8x0 LVD ADV1  
 FWHM 66.0°  
 Efficiency 94 %  
 Peak intensity 0.870 cd/lm  
 LEDs/each optic 4  
 Light colour White  
 Required components:



#### PHOTOMETRIC DATA (SIMULATED):

**OSRAM**  
Opto Semiconductors

LED Duris S8  
FWHM 56.0°  
Efficiency 92 %  
Peak intensity 1.189 cd/lm  
LEDs/each optic 1  
Light colour White  
Required components:



#### GENERAL INFORMATION:

NOTE: The typical beam angle will be changed by different color, chip size and chip position tolerance. The typical total beam angle is the full angle measured where the luminous intensity is half of the peak value.

#### MATERIALS:

As part of our continuous research and improvement processes, and to ensure the best possible quality and availability of our products, LEDiL reserves the right to change material grades without notice.

#### PRODUCT DATA USER AGREEMENT AND DISCLAIMER:

The measured data in the provided downloadable LEDiL Product Datasheets and Mechanical 2D-Drawings is rounded and provided as reference for planning. LEDiL Oy's optical specifications have been verified by conducting performance testing of the products in accordance with the company's quality system. The reported data are averaged results of multiple measurements with typical variation. LEDiL Oy reserves the right to without prior notification make changes and improvements to its products.

LEDiL Oy assumes neither warranty, nor guarantee nor any other liability of any kind for the contents and correctness of the provided data. The provided data has been generated with highest diligence but the provided data may in reality not represent the complete possible variation range of all intrinsic parameters. Therefore, in certain cases a deviation from the provided data could occur.

LEDiL Oy reserves the right to undertake technical changes of its products without further notification which could lead to changes in the provided data. LEDiL Oy assumes no liability of any kind for the possible deviation from any provided data or any other damage resulting from the usage of the provided data.

The user agrees to this disclaimer and user agreement with the download or usage of the provided files.

#### LEDiL Oy

Joensuunkatu 13  
FI-24240 SALO  
Finland

#### LEDiL Inc.

228 West Page Street  
Suite D  
Sycamore IL 60178  
USA

#### Local sales and technical support

[www.ledil.com/  
where\\_to\\_buy](http://www.ledil.com/where_to_buy)

#### Shipping locations

Salo, Finland  
Hong Kong, China

#### Distribution Partners

[www.ledil.com/  
where\\_to\\_buy](http://www.ledil.com/where_to_buy)